

ALBUM [ROSIE THE RIVETERS](#)

Album Description

Last weekend, the World War II Museum, in partnership with the Gary Sinise Foundation, [hosted 18 Rosie the Riveters](#) from around the country.

I was so very honored to get to attend a private dinner with them at the Museum the night before they toured the Museum with some of our students. It was so special getting to talk to some of the women to hear their stories. When I was talking to Maxine the Riveter, I told her how she was a hero and had paved the way for myself and other women. She responded with "I'm not a hero. I was just doing what I had to do. I just went to work."



The Rosie's were also treated to the WWII Museum's new show, [Rosie!](#) which includes music from the period. There was also a lot of discussion of oral histories and the importance of preserving and elevating these voices. It made my primary sources heart so happy!

I learned that there are [chapters of the Rosies in many states](#). Louisiana is hoping to start our chapter soon. If you have a chapter in your area, I recommend reaching out--these stories are so very special and are so impactful for students (and educators, too, of course!)



MRS. JENNIE

MOULA, MISS.



Teaching Notes:

Write a thank you card to Rosie the Riveter...what would you say?

Reference Link: <http://www.loc.gov/item/90709142/>

Created / Published

- 1943.

Genre

- Photographic prints--1940-1950

Notes


- - Photo from Ingalls shipyard, U.S. Maritime Commission.
- - Farm Security Administration and Office of War Information Collection.
- - No. 3176.

Digital Id

- ppmsca 53721 <https://hdl.loc.gov/loc.pnp/ppmsca.53721>




Teaching Notes:

Great book  [Peter Pappas](#) - you must have had fun creating it!



Teaching Notes:

Thank you  [Soline Holmes](#) for sharing your wonderful evening and students visit to the World War II museum.

In Richmond, California, in the San Francisco Bay area— huge for shipbuilding during WWII— there is a [Rosie the Riveter WWII Home Front National Park](#). I have not yet had the opportunity to visit but your post has inspired me to do so.

During Black History Month last February, at one of our schools, the door decorating contest was won by a history teacher and class that researched and designed their classroom door with the story of [Betty Reid Soskin](#).

Ms. Soskin served as a park ranger at the Rosie the Riveter WWII Home National Park until she reached the remarkable age of 100.

[From the Congress.gov:](#)

HONORING THE 2023 WOMEN OF THE YEAR: BETTY REID SOSKIN

Mr. GARAMENDI. Mr. Speaker Pro Tempore, I rise today to recognize the contributions of Betty Reid Soskin as she is honored as one of California's 8th Congressional District's Women of the Year.

Betty is widely known for being the National Park Service's oldest park ranger who retired at the age of 100. She has lived in the East Bay since 1927, when her family moved from New Orleans.

As a young woman during World War II, Betty worked as a shipyard clerk for an all-Black auxiliary lodge of the segregated Boilermaker's union. In 1945 she and her husband founded one of the first Black-owned music stores, which remained open until 2019. Over the years she has worked as staff to a Berkeley city council member, a state Assemblywoman, and a California State Senator.

In the early 2000s, Betty became involved in the plans to open the Rosie the Riveter WWII Home Front National Historical Park. This led to her career as a ranger which began in 2007, at the age of 85.

Betty led talks explaining the importance of the park in memorializing the contributions of women and African Americans working in war industries supporting the U.S. World War II efforts on the home



front. She has used her own experiences and observations as a Black woman to bring light to untold stories of African Americans during WWII and underscore the racism and misogyny experienced by her and countless other women of color throughout her lifetime. Through hard work and storytelling, she has touched the lives of the thousands of park visitors and millions of Americans who can not only empathize with her story but celebrate and learn from it.

On behalf of the people of California's 8th Congressional District, it is my pleasure to honor and recognize Betty Reid Soskin for her positive contributions to our community.

Her story is so interesting and one that students would undoubtedly find engaging.




Teaching Notes:

Forgot the link for the book. And you can't edit comments in the new site

"Recruiting Rosie: The Sales Pitch That Won a War." (It's free at iTunes.)
<https://itunes.apple.com/us/book/recruiting-rosie-sales-pitch/id672952854?mt=11&ign-mpt=uo%3D4>

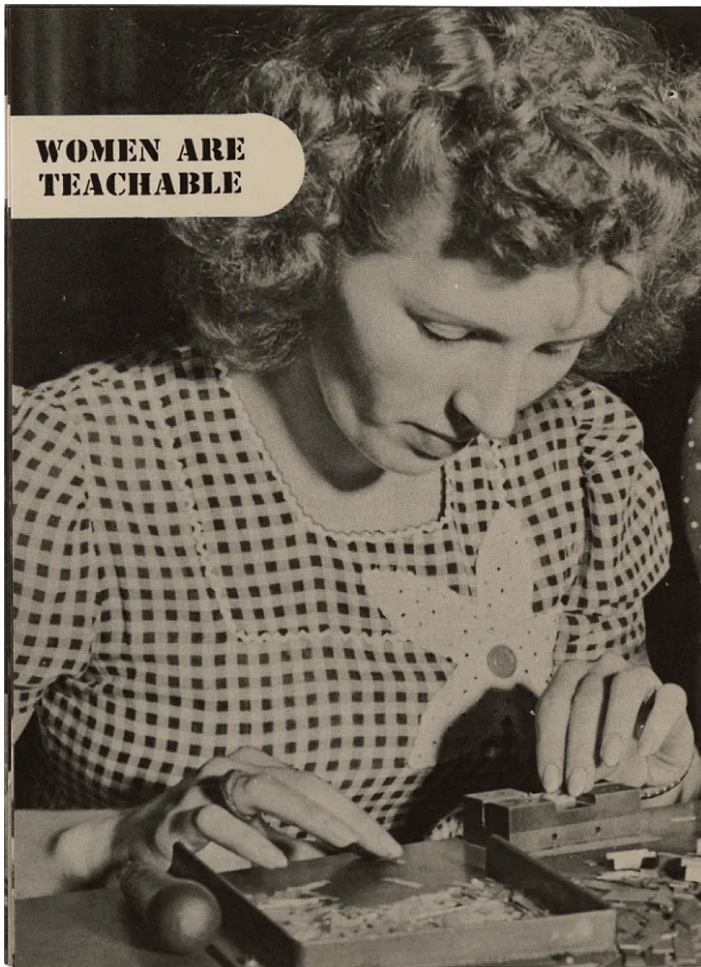
Teaching Notes:



 [Soline Holmes](#) you are so fortunate to met these history-making women. What a thrill. A while back I created a multimedia ebook on the Rosies. "Recruiting Rosie: The Sales Pitch That Won a War." (It's free at iTunes.)

It uses WWII-era media to document the US government's propaganda efforts. "Recruiting Rosie" focusses on how Washington's media campaign targeted women – first coaxed them out of their homes to fill the jobs left vacant by men going off to war – then reversed course four years later to convince women to give up their factory jobs to returning servicemen and return to the roles of wife and mother in the home.

It includes many unique artifacts, critical thinking questions and links back to sources. Here's a howler...



**WOMEN ARE
TEACHABLE**

WHEN YOU SUPERVISE A WOMAN

Make clear her part in the process or product on which she works.

•

Allow for her lack of familiarity with machine processes.

•

See that her working set-up is comfortable, safe and convenient.

•

Start her right by kindly and careful supervision.

•

Avoid horseplay or "kidding"; she may resent it.

•

Suggest rather than reprimand.

•

When she does a good job, tell her so.

•

Listen to and aid her in her work problems.

Or a 1943 article called "Eleven Tips on Getting More Efficiency Out of Women Employees" that includes:


Tip #1. Pick young married women. They usually have more of a sense of responsibility than their unmarried sisters, they're less likely to be flirtatious, they need the work or they wouldn't be doing it, they still have the pep and interest to work hard and to deal with the public efficiently.

Tip #3. General experience indicates that "husky" girls — those who are just a little on the heavy side — are more even-tempered and efficient than their underweight sisters.

Teaching Notes:

and of course I then went to Chronicling America to see what they had for front pages, referencing Rosie - two caught my eye. One article from the [Ottawa County news in Port Clinton, Ohio from February 29, 1952](#) which referenced *Ivy the Ordinance Inspection*, *Minnie the Mechanic* as well as Rosie. The second one that caught my eye was from the [Imperial Valley press in El Centro, Calif. from May 4, 1943](#). I decided to do a [Just One Day album entry](#) for that one... so much was happening at that time. The Rosie reference was about the women needing increased security to go to work. Louis Zamperini was in an article about his bravery. There was a sizable map that detailed this historical invasions of Southern Europe... amongst other gems about the kidnapping of a Nazi's daughter, high profile infidelity and Cinco de Mayo.

Teaching Notes:

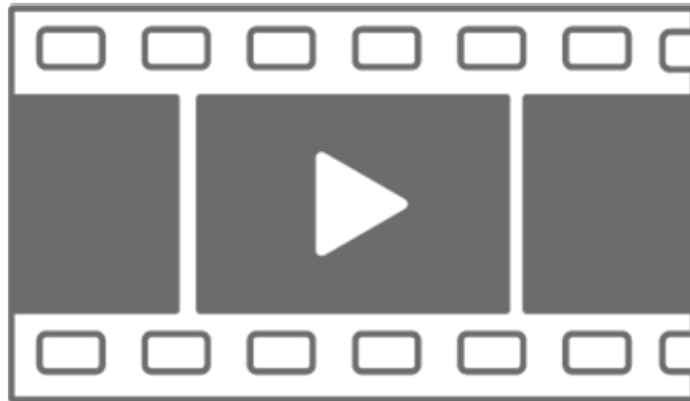
I love the photo of you,  [Soline Holmes](#) , with Maxine the Riveter! What a special and memorable experience!



Teaching Notes:

What a delight! Thank you for sharing. My Great Grandmother (who I had in my life until I was 21) worked in munitions outside Madison, WI for years during WW2. She went from an office job at the courthouse to a munitions factory - but that is what was needed. I hadn't thought about that in quite sometime - thanks for the post to shake loose that memory.

BETTY JANE COOK COLLECTION



Film or Video

Teaching Notes:

The Veterans History Project has some oral histories from Rosie the Riveters. As you listen, think about the kind of work they were doing. What were the conditions like? How did they feel about their jobs? What is something that you are proud of in your own life?

Reference Link: <https://www.loc.gov/item/afc2001001.53275/>

Repository: Veterans History Project, American Folklife Center, Library of Congress



Teaching Notes:

Our high school students got to spend the day with the Riveters. What would you ask a Rosie the Riveter if you could meet her?

'Rosie The Riveter WWII Museum'



Teaching Notes:

This interpretation of the Rosie the Riveter poster was created during COVID.

Why do you think the artist chose this iconic poster to adapt for COVID?

Reference Link: <http://www.loc.gov/item/2020632232/>

Summary

- Poster shows Rosie the Riveter wearing a face mask. The words in the title "We Can" have been painted over.

Created / Published

- [Seattle] : Amplifier, 2020.

Genre

- Inkjet prints--2020
- Posters--2020

Notes



- - Title from item.
- - Alternate title from Amplifier website.
- - Mike Nicholson Los Angeles, California, United States: <https://amplifier.org/portfolio-posts/mike-nicholson-do-it/> *External*
- - "My family decided to make as many mask[s] as we could during our quarantine time. It reminded me of the women call to action during WWII. I think this is our countries moment to work together and show a united compassion for each other." Mike Nicholson
- - On bottom right corner: Mike Nicholson + Amplifier.org.
- - Purchase; Amplifier; 2020; (DLC/PP-2020:074).

Repository

- Library of Congress Prints and Photographs Division Washington, D.C. 20540 USA
<http://hdl.loc.gov/loc.pnp/pp.print>

Digital Id

- ppss 01111 //hdl.loc.gov/loc.pnp/ppss.01111

RIVETER AT WORK ON CONSOLIDATED BOMBER, CONSOLIDATED AIRCRAFT CORP.,



Reference Link: <http://www.loc.gov/item/2017878315/>

Created / Published

- 1942 Oct.

Genre

- Transparencies--Color

Notes

- - 12002-19.
- - Transfer from U.S. Office of War Information, 1944.
- - General information about the FSA/OWI Color Photographs is available at <http://hdl.loc.gov/loc.pnp/pp.fsac>
- - Title from FSA or OWI agency caption.
- - Additional information about this photograph might be available through the Flickr Commons project at http://www.flickr.com/photos/library_of_congress/2179234320 *External*

Repository



- Library of Congress Prints and Photographs Division Washington, D.C. 20540 USA
<http://hdl.loc.gov/loc.pnp/pp.print>

Digital Id

- fsac 1a34953 <https://hdl.loc.gov/loc.pnp/fsac.1a34953>

**ROSIE THE RIVETER NATIONAL HISTORICAL PARK, ROSIE THE RIVETER MEMORIAL,
OFF REGATTA AT MELVILLE SQUARE IN MARINA PARK, RICHMOND, CONTRA COSTA**



Teaching Notes:

How would you design a monument for the Riveters? What kind of monument would you design for a hero in your community?

Reference Link: <http://www.loc.gov/item/ca3332/>

Created / Published

- Documentation compiled after 1968

Notes

- - Survey number: HAER CA-326-D

Repository

- Library of Congress Prints and Photographs Division Washington, D.C. 20540 USA
<http://hdl.loc.gov/loc.pnp/pp.print>



Reference Link: <http://www.loc.gov/item/2021669753/>

Summary

- This poster, produced by Westinghouse during World War II for the War Production Co-ordinating Committee, was part of the national campaign in the United States to enlist women in the workforce. In the face of acute wartime labor shortages, women were needed in the defense industries, the civilian service, and even the armed forces. Publicity campaigns were aimed at encouraging those women who had never before held jobs to join the workforce. Poster and film images glorified and glamorized the roles of working women and suggested that a woman's femininity need not be sacrificed. Women were portrayed as attractive, confident, and resolved to do their part to win the war. Of all the images of working women during World War II, the image of women in factories predominates. Rosie the Riveter--the strong, competent woman dressed in overalls and bandanna--was introduced as a symbol of patriotic womanhood. The accoutrements of war work--uniforms, tools, and lunch pails--were incorporated into the revised image of the feminine ideal.

Created / Published

- [place of publication not identified] : [publisher not identified], [1942 to 1943]

Notes

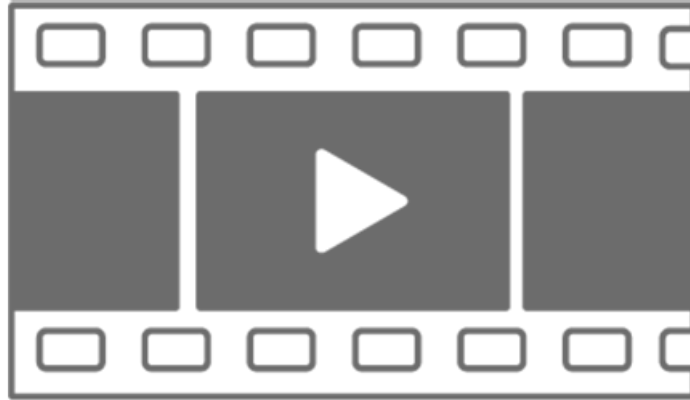


- - Title devised, in English, by Library staff.
- - Original resource extent: 1 color poster.
- - Original resource at: U.S. National Archives and Records Administration.
- - Content in English.
- - Description based on data extracted from World Digital Library, which may be extracted from partner institutions.

Digital Id

- <https://hdl.loc.gov/loc.wdl/wdl.2733>

ROSIE THE RIVETER: REAL WOMEN WORKERS IN WORLD WAR II



Film or Video

Reference Link: <https://www.loc.gov/item/2021687597/>

Summary: Sheridan Harvey explores the evolution of "Rosie the Riveter" and discusses the lives of real women workers in World War II.

Created / Published: Washington, D.C. : Library of Congress, 2003-05-14.

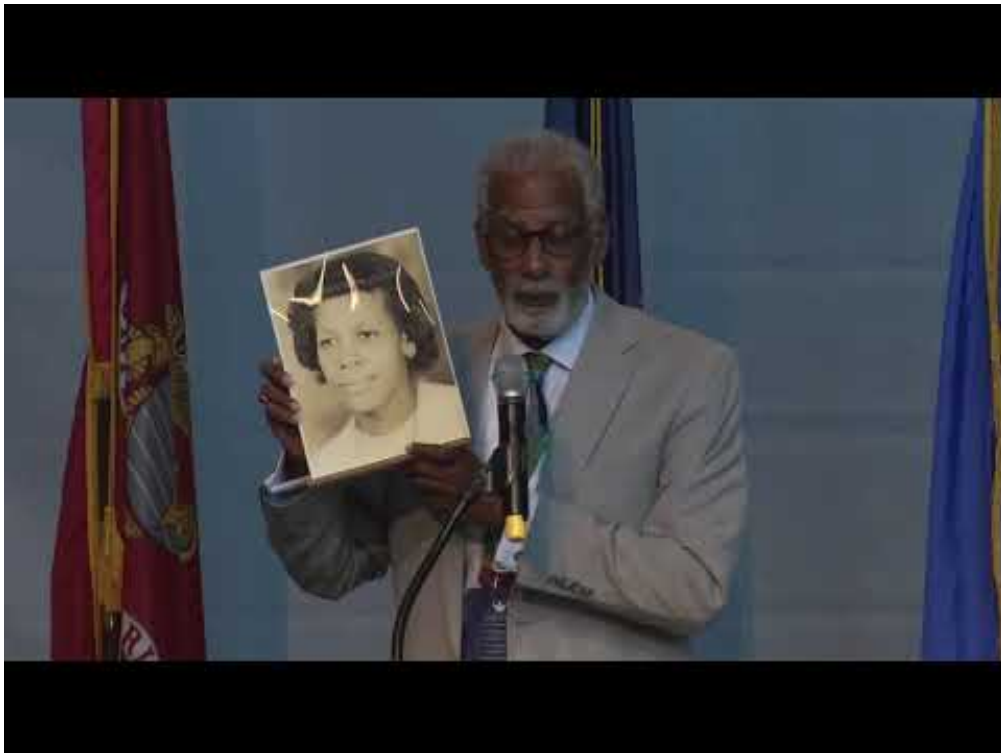
Notes: - Sheridan Harvey. - Recorded on 2003-05-14. - Kids, Families. - Researchers. - Teachers.

Digital Id: <https://hdl.loc.gov/loc.gdc/gdcwebcasts.030226hss0900>



INSTAGRAM: WORLD WAR 2 MUSEUM WELCOMES THE RIVETERS

'ROSIE THE RIVETER CONGRESSIONAL GOLD MEDAL COMMEMORATION | MARCH 21,



'During World War II, millions American women on the Home Front answered the call to join the wartime workforce. Today, Rosie the Riveter is one of the most popular and enduring symbols of the WWII era, representing the women workers whose contributions paved the way for future generations. Join The National WWII Museum as we commemorate the awarding of the Congressional Gold Medal to America's real-life wartime Rosie the Riveters.'