

Image not found

https://sites.msudenver.edu/tpswesternregion/wp-content/uploads/sites/476/2021/11/tps_logo-1.png

ALBUM IMMIGRATION MAPS

Album Description

<https://www.loc.gov/resource/g5140.ar208502/>

Image not found

https://sites.msudenver.edu/tpswesternregion/wp-content/uploads/sites/476/2021/11/tps_logo-1.png

**NEW YORK, N.Y. CHILDREN'S COLONY, A SCHOOL FOR REFUGEE CHILDREN
ADMINISTERED BY A VIENNESE. GERMAN REFUGEE CHILD, A DEVOTEE OF SUPERMAN**



Reference Link: <https://www.loc.gov/resource/ds.04108/>

Summary: Photograph shows a boy reading a Superman comic book, issue # 19. Contributor Names: Collins, Marjory, 1912-1985, photographer Created / Published: 1942 October. Repository: Library of Congress Prints and Photographs Division Washington, D.C. 20540 USA <http://hdl.loc.gov/loc.pnp/pp.print>

AMERICAÆ SIVE QVARTAE ORBIS PARTIS NOVA ET EXACTISSIMA DESCRIPTIO



Reference Link: <http://www.loc.gov/item/map49000970/>

Image not found

https://sites.msudenver.edu/tpswesternregion/wp-content/uploads/sites/476/2021/11/tps_logo-1.png

Contributor Names: Gutiérrez, Diego, active 1554-1569.

Cock, Hieronymus, approximately 1510-1570.

Lessing J. Rosenwald Collection (Library of Congress)

Created / Published: [Antwerp : s.n.], 1562.

Subject Headings: - Western Hemisphere--Maps--Early works to 1800

- America--Maps--Early works to 1800

- Western Hemisphere

- America

Notes: - Covers North and South America with the adjacent seas.

- Relief shown pictorially.

- From the Rosenwald Collection, Library of Congress, no. 1303.

- Originally printed on 6 sheets.

- Described in *Quarterly Journal of the Library of Congress*, v. 6, no. 3 (May 1949), p. 18-20.

- Includes texts in cartouche, statements of dedication, coats-of-arms, ill. of allegorical figure "Victoria", and ill. of sailing ships at sea and imaginary marine creatures.

- Available also through the Library of Congress Web site as a raster image.

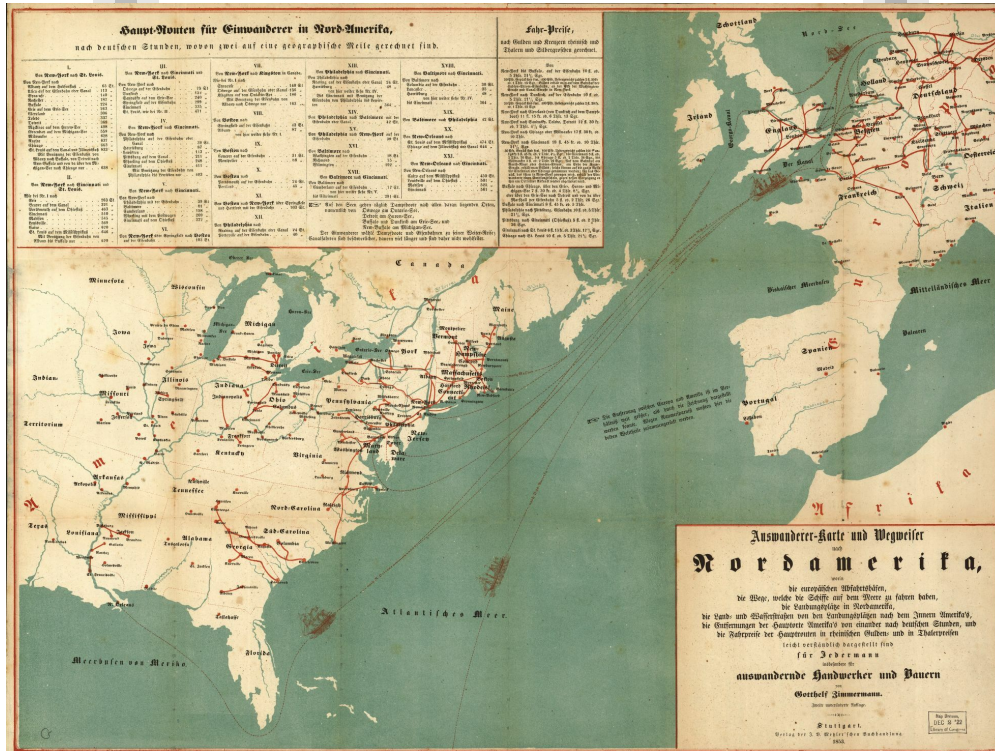
- LC sheet trimmed.

- Vault

Repository: Library of Congress Geography and Map Division Washington, D.C. 20540-4650 USA dcu

Digital Id: <http://hdl.loc.gov/loc.gmd/g3290.ct000342>

AUSWANDERER-KARTE UND WEGWEISER NACH NORDAMERIKA. (EMIGRATION MAP TO NORTH AMERICA.) 1853.



Teaching Notes:

In German.

How did Germans think about emigrants leaving Germany for the Americas?

Reference Link: <http://www.loc.gov/item/98687132>

Contributor Names: Zimmermann, Gotthelf.

Created / Published: Stuttgart : J.B. Metzler'schen Buchh., 1853.

Subject Headings: - United States--Emigration and immigration--Maps

- Europe--Emigration and immigration--Maps

- United States

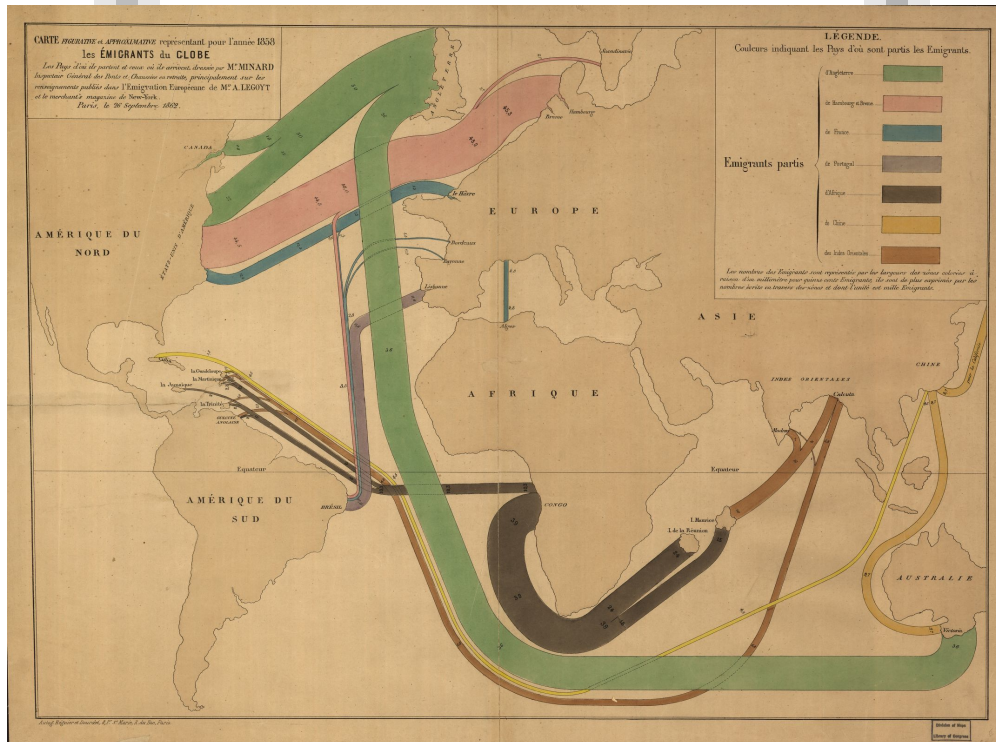
- Europe

Notes: - Available also through the Library of Congress Web site as a raster image.

Repository: Library of Congress Geography and Map Division Washington, D.C. 20540-4650 dcu

Digital Id: <http://hdl.loc.gov/loc.gmd/g3701e.ct000244>

CARTE FIGURATIVE ET APPROXIMATIVE REPRÉSENTANT POUR L'ANNÉE 1858 LES ÉMIGRANTS DU GLOBE, LES PAYS D'OU ILS PARTENT ET CEUX OÙ ILS ARRIVENT. (1858).



Teaching Notes:

Map shows patterns of global immigration.

In French. How did the French view immigration?

Reference Link: <http://www.loc.gov/item/98687134/>

Contributor Names: Minard, Charles Joseph, 1781-1870.

Legoyt, A. (Alfred), 1815-1885.

Regnier et Dourdet (Firm)

Created / Published: Paris : Charles Joseph Minard, 1862.

Subject Headings: - Emigration and immigration--Maps

- World maps

- Earth

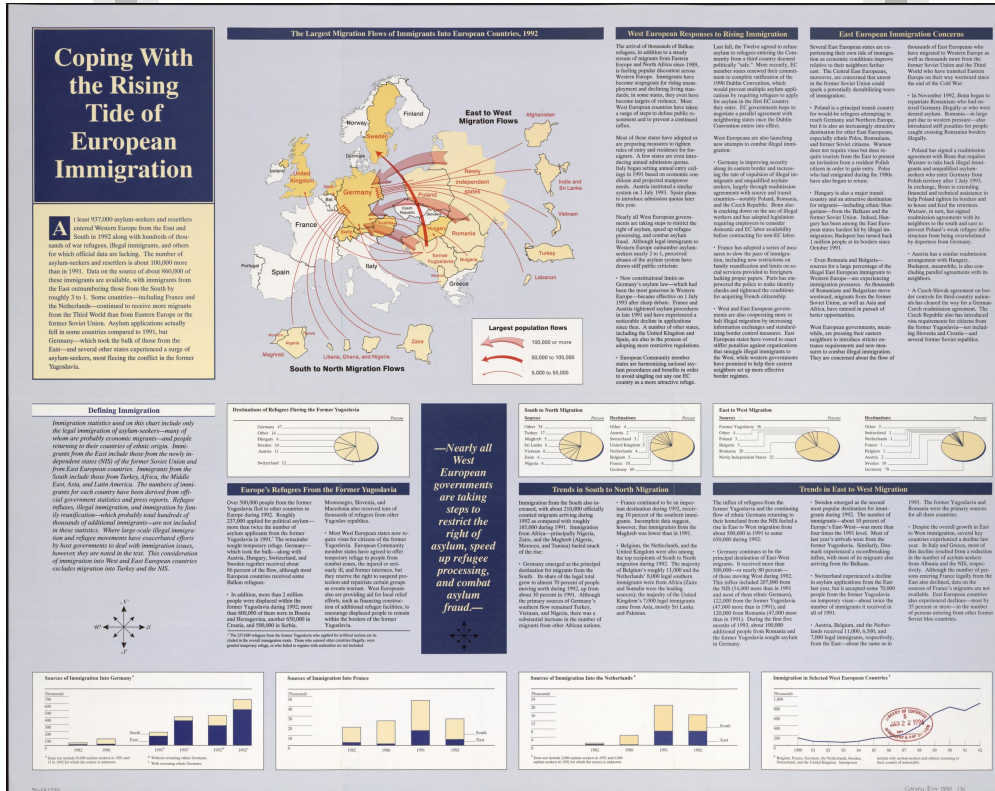
Notes: - Fold-lined, mounted on cloth.

- Available also through the Library of Congress Web site as a raster image.

Repository: Library of Congress Geography and Map Division Washington, D.C. 20540-4650 dcu

Digital Id: <http://hdl.loc.gov/loc.gmd/g3201e.ct000242>

COPING WITH THE RISING TIDE OF EUROPEAN IMMIGRATION : [EUROPEAN COMMUNITY COUNTRIES]. CIA. 1993.



Reference Link: <http://www.loc.gov/item/96681733/>

Contributor Names: United States. Central Intelligence Agency.

Created / Published: [Washington, D.C. : Central Intelligence Agency, 1993?]

Subject Headings: - European Economic Community countries--Emigration and immigration--Maps

- Europe--Emigration and immigration--Maps

- Europe

Notes: - Shows legal immigration with arrows scaled to size of population flow.

- Panel title/title at upper left.

- Alternate title at top: The largest migration flows of immigrants into European countries, 1992.

- Includes text, graphs, 6 insets of "East to west migration flows," and 5 insets of "South to north migration flows."

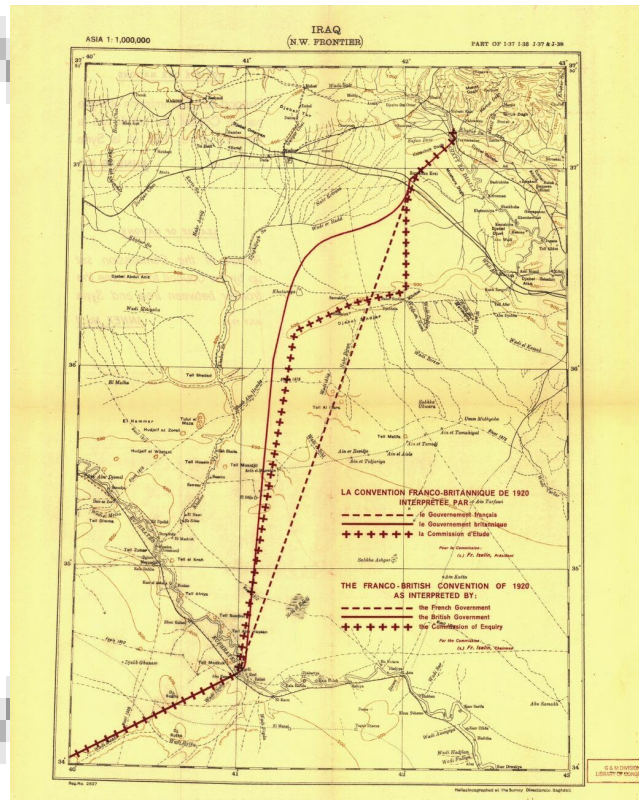
- Title panel, directory of map distributors, and blank area on verso.

- Available also through the Library of Congress Web site as a raster image.

Repository: Library of Congress Geography and Map Division Washington, D.C. 20540-4650 USA dcu

Digital Id: <http://hdl.loc.gov/loc.gmd/g5701e.ct002765>

REPORT OF THE COMMISSION ENTRUSTED BY THE COUNCIL WITH THE STUDY OF THE FRONTIER BETWEEN SYRIA AND IRAQ. (1932).



Teaching Notes:

League of Nations study of the newly carved out nations of Syria and Iraq.

Deepen understanding of this region that is in the headlines in 2019!

Reference Link: <http://www.loc.gov/item/32035610/>

Contributor Names: League of Nations. Commission Entrusted with the Study of the Frontier between Syria and Iraq.

Created / Published: [Geneva, 1932]

Subject Headings: - Syria--Boundaries--Iraq

- Iraq--Boundaries--Syria

- Syria--Boundaries--Iraq--Maps

- Iraq--Boundaries--Syria--Maps

- Syria

- Iraq

Notes: - Available also through the Library of Congress Web site as a raster image.

Repository: Library of Congress Geography and Map Division Washington, D.C. 20540-4650 USA dcu

Digital Id: <http://hdl.loc.gov/loc.gmd/g7461f.ct000889a>

Image not found

https://sites.msudenver.edu/tpswesternregion/wp-content/uploads/sites/476/2021/11/tps_logo-1.png

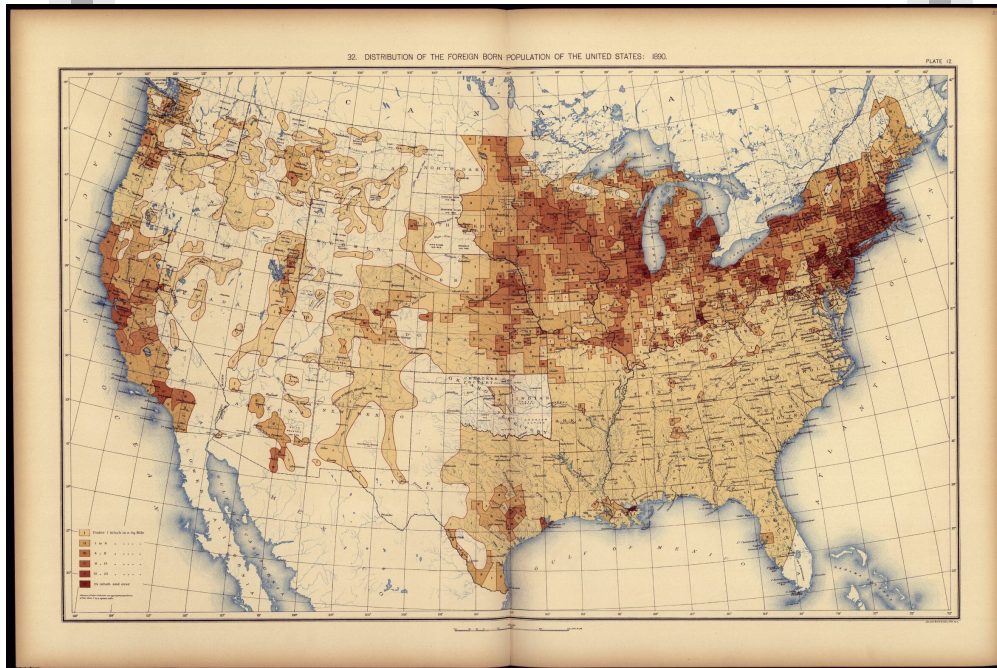
<http://hdl.loc.gov/loc.gmd/g7461f.ct000889b>

<http://hdl.loc.gov/loc.gmd/g7461f.ct000889c>

<http://hdl.loc.gov/loc.gmd/g7461f.ct000889d>



DISTRIBUTION OF THE FOREIGN BORN POPULATION OF THE UNITED STATES: 1890



Teaching Notes:

Locate immigration patterns to the U.S. in the 1890s.

Where are immigrants going today? Why?

Reference Link: <http://www.loc.gov/resource/g3701gm.gct00010/?sp=30>

Contributor Names: United States. Census office. 11th census, 1890.

Gannett, Henry, 1846-1914.

Created / Published: Washington, Govt. print. off., 1898.

Subject Headings: - United States--Census, 1890

- United States--Statistics--Maps

- United States

Notes: - Phillips, 1333

- At head of title: Department of the interior, Census office. Robert P. Porter, superintendent ... Carroll D. Wright, commissioner of labor in charge.

- Available also through the Library of Congress Web site as a raster image.

- Copies renumbered 4/2000. Copy 3 was made Copy 1.

Repository: Library of Congress Geography and Map Division Washington, D.C. 20540-4650 USA dcu

Digital Id: <http://hdl.loc.gov/loc.gmd/g3701gm.gct00010>

Image not found

https://sites.msudenver.edu/tpswesternregion/wp-content/uploads/sites/476/2021/11/tps_logo-1.png

IMMIGRATION INTERACTIVE. INCLUDES MAPS OF 11 DIFFERENT GROUPS OF AMERICANS. REQUIRES FLASH TECHNOLOGY.

Teaching Notes:

This excellent resource allows students to explore the history and culture of many groups from around the world, including Native Americans.

Within the exhibit of any of the 11 groups, click on the globe at left to see a map showing the movement of that group in the U.S. over time.

Requires Flash technology; respond to request to download or turn on current Flash. Your computer may simply not allow use of Flash.

BOSTON NEIGHBORHOODS : TOP 10 COUNTRIES OF BIRTH FOR FOREIGN-BORN POPULATION. (2017).



Teaching Notes:

The Leventhal Map Center at the Boston Public Library created this map showing word clouds of the most common immigrant groups by neighborhood in present day Boston.

<https://collections.leventhalmap.org/search/commonwealth:h989r707c>

IMMIGRANT CHILDREN, WASHINGTON SCHOOL. LOCATION: BOSTON, MASSACHUSETTS.



Reference Link: <http://www.loc.gov/item/2018674287/>

Contributor Names: Hine, Lewis Wickes, 1874-1940, photographer

Created / Published: 1909 October.

Subject Headings: - School children

- Immigrants

- Schools

- United States--Massachusetts--Boston

Genre: Photographic prints

Notes: - Title from NCLC caption card.

- Attribution to Hine based on provenance.

- In album: Miscellaneous.

- Hine no. 943.

- Credit line: National Child Labor Committee collection, Library of Congress, Prints and Photographs Division.

- General information about the National Child Labor Committee collection is available at:

<https://hdl.loc.gov/loc.pnp/pp.nclc>

- Forms part of: National Child Labor Committee collection.

Repository: Library of Congress Prints and Photographs Division Washington, D.C. 20540 USA

<https://hdl.loc.gov/loc.pnp/pp.print>

Digital Id: nclc 04565 <https://hdl.loc.gov/loc.pnp/nclc.04565>

Image not found

https://sites.msudenver.edu/tpswesternregion/wp-content/uploads/sites/476/2021/11/tps_logo-1.png

STATE PROPORTION OF THE FOREIGN-BORN POPULATION IN THE UNITED STATES

Teaching Notes:

State Proportion of the Foreign-Born Population in the United States and Metropolitan Areas with 700,000 Foreign Born or More, 2010

Source: 2010 American Community Survey, US Census Bureau. © 2012 Migration Policy Institute