

Image not found

https://sites.msudenver.edu/tpswesternregion/wp-content/uploads/sites/476/2021/11/tps_logo-1.png

ALBUM PRIMARY SOURCES AND PICTURE BOOKS: HORSE POWER: HOW HORSES CHANGED THE WORLD BY JENNIFER THERMES

Album Description

bestof

Image not found

https://sites.msudenver.edu/tpswesternregion/wp-content/uploads/sites/476/2021/11/tps_logo-1.png

HORSE-DRAWN BAKERY CART, HARTFORD.JPG



Reference Link: <https://digitalcatalog.chs.org/islandora/object/40002%3A14149>

Image not found

https://sites.msudenver.edu/tpswesternregion/wp-content/uploads/sites/476/2021/11/tps_logo-1.png

HORSE DRAWN AMBULANCE.PNG



Reference Link: https://cityofboston.access.preservica.com/uncategorized/IO_5c075f6b-ae1d-4e46-ab9b-e2effb083a47/

Image not found

https://sites.msudenver.edu/tpswesternregion/wp-content/uploads/sites/476/2021/11/tps_logo-1.png

MAN WORKING FIELD WITH HORSE-DRAWN PLOW IN FLORIDA.JPEG



Reference Link: <https://collections.lib.uwm.edu/digital/collection/agsnorth/id/10396>

Image not found

https://sites.msudenver.edu/tpswesternregion/wp-content/uploads/sites/476/2021/11/tps_logo-1.png

CONSTRUCTION TOP VIEW-HORSE DRAWN CARTS.PNG



Reference Link: https://historicpittsburgh.org/islandora/object/pitt%3APSS_028_B001_F002_I009

FARMING SCENES. THREE HORSES PULLING DISK



Reference Link: <http://www.loc.gov/item/2019682643/>

Contributor Names: Horydczak, Theodor, approximately 1890-1971, photographer

Created / Published: ca. 1920-ca. 1950.

Subject Headings: - Farming.

- Horses.

- Plowing.

- United States.

- United States

Notes: - Old negative number: 443.

- Title and date from photographer's notebooks or subject index cards.

- Credit line: Theodor Horydczak Collection, Library of Congress, Prints and Photographs Division.

- General information about the Theodor Horydczak Collection is available at:

<https://hdl.loc.gov/loc.pnp/pp.horyd>

- Forms part of: Horydczak photograph collection (Library of Congress)

- Temp. note: Batch three.

Repository: Library of Congress Prints and Photographs Division Washington, D.C. 20540 USA

Digital Id: thc 5a38174 <https://hdl.loc.gov/loc.pnp/thc.5a38174>

Image not found

https://sites.msudenver.edu/tpswesternregion/wp-content/uploads/sites/476/2021/11/tps_logo-1.png

LOGGING CREW WITH HORSE-DRAWN CART.JPGEG

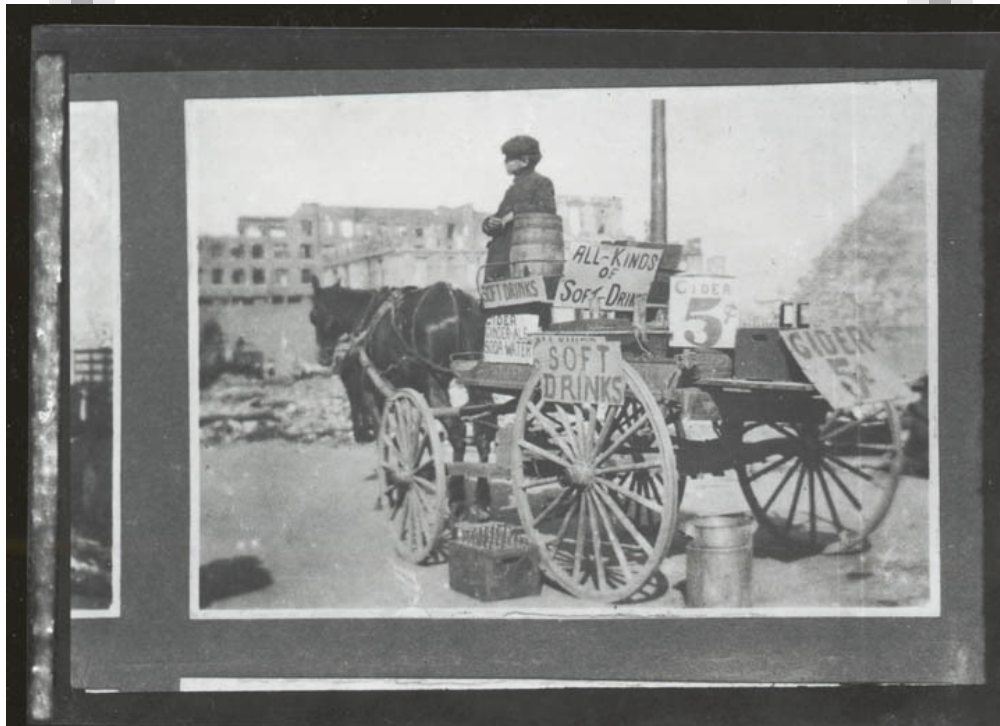


Reference Link: <https://content.mpl.org/digital/collection/Langlade/id/524>

Image not found

https://sites.msudenver.edu/tpswesternregion/wp-content/uploads/sites/476/2021/11/tps_logo-1.png

DRINK VENDOR ON HORSE-DRAWN CART.JPEG



Reference Link:

<https://cs1.primo.exlibrisgroup.com/discovery/fulldisplay?docid=alma990013866650205115&context=L&vid=01CS>

Image not found

https://sites.msudenver.edu/tpswesternregion/wp-content/uploads/sites/476/2021/11/tps_logo-1.png

MINERS WITH ORE CART AND HORSE.PNG



Reference Link:

https://utah-primoprod.hosted.exlibrisgroup.com/primo-explore/fulldisplay?docid=digcoll_unr_15spphotoscollection_3097&context=L&vid=MWDL

Image not found

https://sites.msudenver.edu/tpswesternregion/wp-content/uploads/sites/476/2021/11/tps_logo-1.png

HORSE DRAWN QUIGLEY BROTHERS BAKERY CART.JPEG



Reference Link: <https://sailsinc.omeka.net/items/show/3175>

Image not found

https://sites.msudenver.edu/tpswesternregion/wp-content/uploads/sites/476/2021/11/tps_logo-1.png

HORSE CART.PNG



Reference Link: <https://dl.mospace.umsystem.edu/umsl/islandora/object/umsl:251744>

Image not found

https://sites.msudenver.edu/tpswesternregion/wp-content/uploads/sites/476/2021/11/tps_logo-1.png

HORSE DRAWN DELIVERY CART.JPEG



Reference Link: <https://www.alliancememory.org/digital/collection/places/id/851>

Image not found

https://sites.msudenver.edu/tpswesternregion/wp-content/uploads/sites/476/2021/11/tps_logo-1.png

HORSE PULLING TROLLEY CART.JPEG



Reference Link: https://collections.si.edu/search/detail/edanmdm:nmah_1890642

Image not found

https://sites.msudenver.edu/tpswesternregion/wp-content/uploads/sites/476/2021/11/tps_logo-1.png

HORSE-CART IN CORNFIELD.JPEG



Reference Link:

<https://digital.lib.ecu.edu/8282/#?c=0&m=0&s=0&cv=0&xywh=1565%2C1069%2C1476%2C1130>

Image not found

https://sites.msudenver.edu/tpswesternregion/wp-content/uploads/sites/476/2021/11/tps_logo-1.png

VINCENT CLUB HORSE CART.JPEG



Reference Link: <https://www.digitalcommonwealth.org/search/commonwealth:5h73q878h>

Image not found

https://sites.msudenver.edu/tpswesternregion/wp-content/uploads/sites/476/2021/11/tps_logo-1.png

**UNIDENTIFIED PHOTOGRAPH OF MAN DRIVING HORSE-DRAWN LUMBER CART DOWN
A STREET.JPEG**



Reference Link: <https://historysanjose.pastperfectonline.com/photo/A5C1B2AE-7A5A-49D5-9F0C-404542436025>

Image not found

https://sites.msudenver.edu/tpswesternregion/wp-content/uploads/sites/476/2021/11/tps_logo-1.png

HOUSE ON A HORSE CART.PNG



Reference Link: <https://catalog.archives.gov/id/32202847>

A HORSEDRAWN STREETCAR. RAPID TRANSIT. COVINGTON GA.



Reference Link: <http://www.loc.gov/item/2012646773/>

Summary: Photograph shows three men and two boys aboard mule-drawn railroad car on Clark Street in front of Newton County Courthouse in Covington, Georgia.

Created / Published: [between ca. 1888 and ca. 1917]

Subject Headings: - Horse railroads--Georgia--Covington--1880-1920

Notes: - Stationery & Novelty Co.

- Hand-colored.

- Title from item.

Repository: Library of Congress Prints and Photographs Division Washington, D.C. 20540 USA

<http://hdl.loc.gov/loc.pnp/pp.print>

Digital Id: [cph 3a14167 //hdl.loc.gov/loc.pnp/cph.3a14167](http://hdl.loc.gov/loc.pnp/cph.3a14167)

Image not found

https://sites.msudenver.edu/tpswesternregion/wp-content/uploads/sites/476/2021/11/tps_logo-1.png

GRAPE CRATES ON HORSE CART



Reference Link: https://library.artstor.org/#/object/SS7729995_7729995_10344219_CORNELL

Image not found

https://sites.msudenver.edu/tpswesternregion/wp-content/uploads/sites/476/2021/11/tps_logo-1.png

HORSE AND CART WITH SUPPLIES.JPEG



Reference Link: <http://archives.csuchico.edu/digital/collection/coll11/id/8216>

Image not found

https://sites.msudenver.edu/tpswesternregion/wp-content/uploads/sites/476/2021/11/tps_logo-1.png

WATER CART HAULED BY HORSE.JPEG



Reference Link: <https://tessa.lapl.org/cdm/ref/collection/photos/id/101790>

Image not found

https://sites.msudenver.edu/tpswesternregion/wp-content/uploads/sites/476/2021/11/tps_logo-1.png

**HORSE DRAWN GARBAGE WAGON OF THE DEPARTMENT OF HEALTH AND
SANITATION, SEATTLE, WASHINGTON, OCTOBER 28, 1915.JPEG**



Reference Link: <https://cdm16786.contentdm.oclc.org/digital/collection/lee/id/208>

NUMBER TWELVE ENGINE



Reference Link: <http://www.loc.gov/item/2002695415/>

Summary: Photo shows horse-drawn fire engine of Engine Company no. 12, outside firehouse at 1626 North Capitol Street, N.W., Washington, D.C.

Created / Published: [between 1897 and 1910]

Subject Headings: - District of Columbia.--Fire Dept.--1890-1910

- Fire engines & equipment--Washington (D.C.)--1890-1910

- Fire fighters--Washington (D.C.)--1890-1910

Notes: - No. 838.

Repository: Library of Congress Prints and Photographs Division Washington, D.C. 20540 USA

<http://hdl.loc.gov/loc.pnp/pp.print>

Digital Id: ds 06709 //hdl.loc.gov/loc.pnp/ds.06709

ppmsc 09956 //hdl.loc.gov/loc.pnp/ppmsc.09956

Image not found

https://sites.msudenver.edu/tpswesternregion/wp-content/uploads/sites/476/2021/11/tps_logo-1.png

CART AND HORSE ON SOUTH BOSTON WATERFRONT .JPEG



Reference Link: <https://www.digitalcommonwealth.org/search/commonwealth:5h73s586x>

DELIVERING MILK TO CITY HOMES



Reference Link: <http://www.loc.gov/item/2004681908/>

Summary: Milkman carrying milk from horse-drawn wagon of Moore's Dairy Products, in front of house.
Created / Published: c1925 Jan. 3.

Notes: - P-263992 U.S. Copyright Office

- Stereo copyrighted by the Keystone View Co.

- This record contains unverified, old data from caption card.

- Caption card tracings: Ice cream; City & town life; Photog. Index; Occupations Milkmen; Delivery trucks & wagons; Dairy industry; Shelf.

Repository: Library of Congress Prints and Photographs Division Washington, D.C. 20540 USA

Digital Id: cph 3b04462 <http://hdl.loc.gov/loc.pnp/cph.3b04462>

[KENNEBEC ICE HORSE-DRAWN WAGON PARKED IN FRONT OF BIRNEY PUBLIC SCHOOL - SCHOOL CHILDREN LINED UP WITH TEACHER BEHIND WAGON AS MAN SHOWS THEM LARGE CHUNK OF ICE SUSPENDED BY TONGS, WASHINGTON, D.C.]



Reference Link: <http://www.loc.gov/item/2001702335/>

Contributor Names: Johnston, Frances Benjamin, 1864-1952, photographer

Created / Published: [1899?]

Subject Headings: - Education--Washington (D.C.)--1890-1900

Genre: Cyanotypes--1890-1900

Notes: - Title and other information transcribed from caption card.

- Frances Benjamin Johnston Collection (Library of Congress).

- In album: "8th Division."

- Caption card tracings: Children Misc. 1899; D.C., Wash. Misc. 1899; D.C., Wash. Schools Birney Public Schools; Delivery trucks & wagons; Ice industry; Shelf.

Repository: Library of Congress Prints and Photographs Division Washington, D.C. 20540 USA

Digital Id: [cph 3a52034 //hdl.loc.gov/loc.pnp/cph.3a52034](https://hdl.loc.gov/loc.pnp/cph.3a52034)

[VIEW OF S.W., BLOCK 386, PROBABLY D STREET SIDE OF BALTIMORE & POTOMAC RAILROAD FREIGHT STATION BETWEEN MARYLAND & D, 9TH & 10TH SHOWING FREIGHT AND HORSE-DRAWN CARTS IN FRONT OF STATION]



Reference Link: <http://www.loc.gov/item/2016647081/>

Created / Published: [1901]

Subject Headings: - Baltimore and Potomac Railroad

- Shipping--Washington (D.C.)--1900-1910

- Carts & wagons--Washington (D.C.)--1900-1910

Genre: Glass negatives--1900-1910

Notes: - Title devised by Library staff.

- Annotations on corresponding photographic print in LOT 11516-D: "See LC-Z7-131, 130 & Z7-129 ; center section of panorama."

- Forms part of: D.C. Street Survey Collection.

Repository: Library of Congress Prints and Photographs Division Washington, D.C. 20540 USA

<http://hdl.loc.gov/loc.pnp/pp.print>

Digital Id: [ppmsca 40364 //hdl.loc.gov/loc.pnp/ppmsca.40364](http://hdl.loc.gov/loc.pnp/ppmsca.40364)

[STREET TYPES OF NEW YORK CITY: MEN LOADING HORSE-DRAWN SNOW CARTS]



Reference Link: <http://www.loc.gov/item/2002699097/>

Created / Published: c1896.

Notes: - Photoprint copyrighted by Elizabeth Alice Austen.

- This record contains unverified data from caption card.

- Caption card tracings: Geogr.; Occupations; Street cleaners; Carts.

Repository: Library of Congress Prints and Photographs Division Washington, D.C. 20540 USA

Digital Id: [cph 3b24118 //hdl.loc.gov/loc.pnp/cph.3b24118](http://hdl.loc.gov/loc.pnp/cph.3b24118)

[PRODUCE VENDOR WITH HIS HORSE-DRAWN CART AT WASHINGTON MARKET, NEW YORK CITY] / WORLD TELEGRAM & SUN PHOTO BY PHYLLIS TWACHTMAN.



Reference Link: <http://www.loc.gov/item/2006686030/>

Contributor Names: Twachtman, Phyllis, photographer

Created / Published: 1960.

Subject Headings: - Markets--New York (State)--New York--1960

- Carts & wagons--New York (State)--New York--1960

- Horses--New York (State)--New York--1960

Notes: - NYWT&S staff photograph.

- Title devised by Library staff.

- Forms part of: New York World-Telegram and the Sun Newspaper Photograph Collection (Library of Congress).

Repository: Library of Congress Prints and Photographs Division Washington, D.C. 20540 USA

Digital Id: ppmsca 12727 //hdl.loc.gov/loc.pnp/ppmsca.12727

NEW YORK'S STREETS



Reference Link: <http://www.loc.gov/item/2014689874/>

Summary: Photo shows a horse-drawn garbage wagon with its load dumped in the street during a New York City garbage strike, Nov. 8-11, 1911. (Source: Flickr Commons project, 2009)

Contributor Names: Bain News Service, publisher

Created / Published: 1911 Nov. 13 (date created or published later by Bain)

Subject Headings: - New York

Genre: Glass negatives

Notes: - Forms part of: George Grantham Bain Collection (Library of Congress).

- Title from data provided by the Bain News Service on the negative.

- General information about the George Grantham Bain Collection is available at

<http://hdl.loc.gov/loc.pnp/pp.ggbain>

- Additional information about this photograph might be available through the Flickr Commons project at

http://www.flickr.com/photos/library_of_congress/2162968075 External

Repository: Library of Congress Prints and Photographs Division Washington, D.C. 20540 USA

<http://hdl.loc.gov/loc.pnp/pp.print>

Digital Id: ggbain 09889 //hdl.loc.gov/loc.pnp/ggbain.09889

HOT DAY--WATERING HORSES



Reference Link: <http://www.loc.gov/item/2014689803/>

Summary: Photo shows horses drinking water, Union Square, New York City. (Source: Flickr Commons project, 2010)

Contributor Names: Bain News Service, publisher

Created / Published: 1911 July 7 (date created or published later by Bain)

Genre: Glass negatives

Notes: - Forms part of: George Grantham Bain Collection (Library of Congress).

- Title and date from data provided by the Bain News Service on the negative.

- General information about the George Grantham Bain Collection is available at

<http://hdl.loc.gov/loc.pnp/pp.ggbain>

- Additional information about this photograph might be available through the Flickr Commons project at

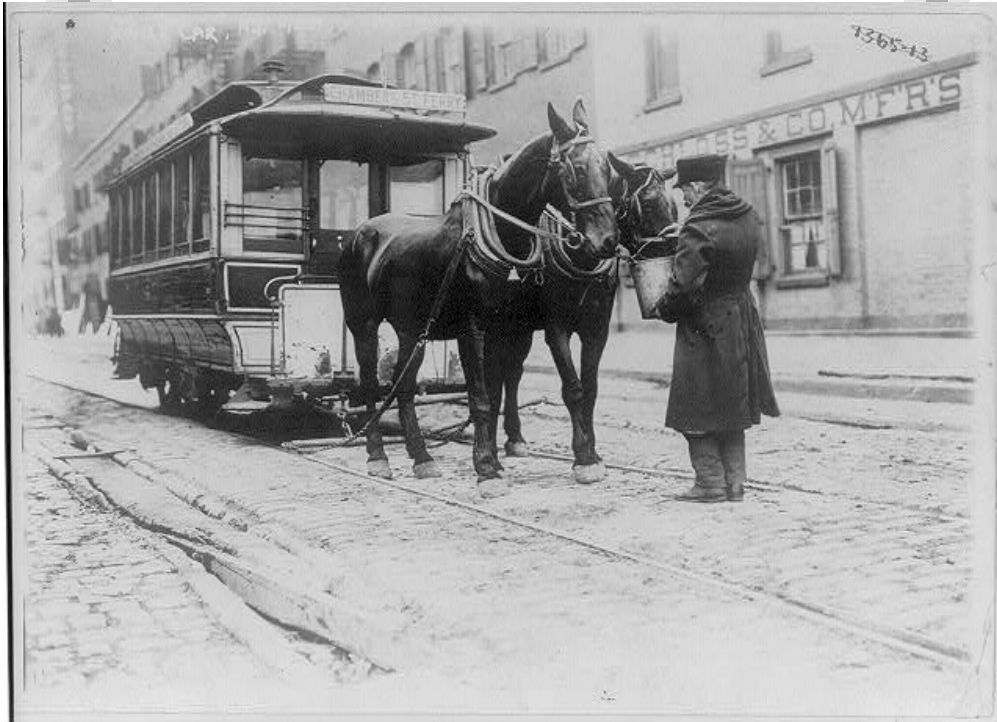
http://www.flickr.com/photos/library_of_congress/2162949447 External

Repository: Library of Congress Prints and Photographs Division Washington, D.C. 20540 USA

<http://hdl.loc.gov/loc.pnp/pp.print>

Digital Id: ggbain 09818 //hdl.loc.gov/loc.pnp/ggbain.09818

HORSE CAR, N.Y., 1908



Reference Link: <http://www.loc.gov/item/2006689803/>

Summary: Conductor watering horses, New York City.

Created / Published: 1908.

Notes: - Photo by Bain News Service, N.Y.C.

- Title and other information transcribed from unverified, old caption card data and item.

- George Grantham Bain Collection (Library of Congress).

- Caption card tracings: Shelf.

Repository: Library of Congress Prints and Photographs Division Washington, D.C. 20540 USA

Digital Id: [cph 3a47732 //hdl.loc.gov/loc.pnp/cph.3a47732](https://hdl.loc.gov/loc.pnp/cph.3a47732)

HORSE AND WAGON, CROSSVILLE, TENNESSEE



Reference Link: <http://www.loc.gov/item/2017730854/>

Contributor Names: Shahn, Ben, 1898-1969, photographer
United States. Resettlement Administration.

Created / Published: 1937.

Subject Headings: - United States--Tennessee--Crossville
- Towns--Tennessee

Genre: Nitrate negatives

Notes: - Title and other information from caption card.

- Transfer; United States. Office of War Information. Overseas Picture Division. Washington Division; 1944.

- More information about the FSA/OWI Collection is available at <http://hdl.loc.gov/loc.pnp/pp.fsaowi>

Repository: Library of Congress Prints and Photographs Division Washington, DC 20540 USA

<http://hdl.loc.gov/loc.pnp/pp.print>

Digital Id: fsa 8a17085 //hdl.loc.gov/loc.pnp/fsa.8a17085