

## ALBUM THE LIFE CYCLE OF PLANTS - A GALLERY WALK FOR KINDERGARTEN STUDENTS

### Album Description

This is a Gallery walk of photographs that all relate to the life cycle of plants at the kindergarten level.

This walk will begin the conversation to cover the standards strands listed below.

- **Life Processes**

- K.6 The student will investigate and understand basic needs and life processes of plants
- Key concepts include
  - a) living things change as they grow, and they need food, water, and air to survive;
  - b) plants and animals live and die

While students walk around they will each be given a sticker that will include a spot for their name. Green ? mark stickers be placed on pictures they have a question about. ink thumbs- up stickers with their names will indicate I understand this or have a connection. Pre K - 2 Science

[APPLE BLOSSOMS]



**Reference Link:** <http://www.loc.gov/item/2016803177/>

Contributor Names: Detroit Publishing Co., publisher

Created / Published: [between 1900 and 1906]

Subject Headings: - Flowers

- Apple trees

Genre: Dry plate negatives

Notes: - Title and date from Detroit, Catalogue P (1906).

- Detroit Publishing Co. no. 016374.

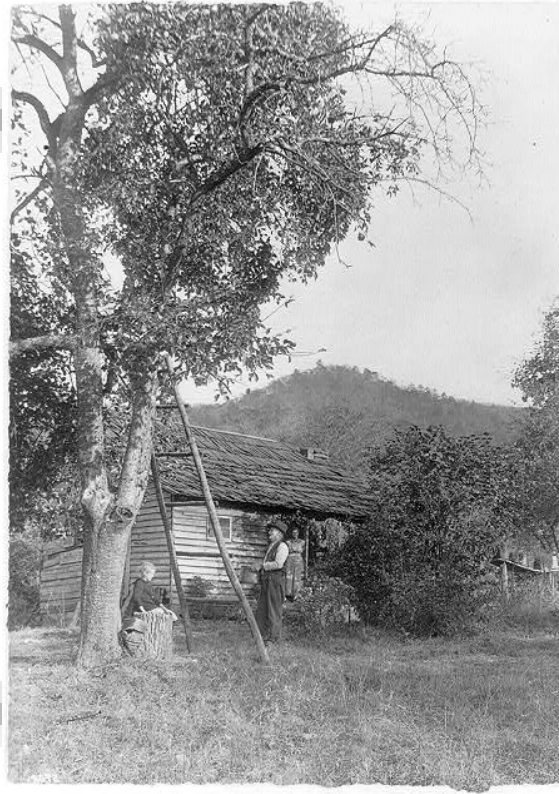
- Gift; State Historical Society of Colorado; 1949.

Repository: Library of Congress Prints and Photographs Division Washington, D.C. 20540 USA

<http://hdl.loc.gov/loc.pnp/pp.print>

Digital Id: det 4a10845 //hdl.loc.gov/loc.pnp/det.4a10845

**[MOUNTAIN APPLE TREE]**



**Reference Link:** <http://www.loc.gov/item/2006679182/>

**Summary:** Western (?) North Carolina, circa 1917.

**Created / Published:** [ca. 1917]

**Notes:** - Photo by William Barnhill.

- This record contains unverified, old data from caption card.

**Repository:** Library of Congress Prints and Photographs Division Washington, D.C. 20540 USA

**Digital Id:** cph 3a48457 //hdl.loc.gov/loc.pnp/cph.3a48457

## WOLF RIVERS APPLE TREE BEHIND ELSIE RICH'S HOUSE



**Reference Link:** <http://www.loc.gov/item/cmns001197/>

Contributor Names: Hufford, Mary, 1952- (Photographer)

Created / Published: April 25, 1999

Subject Headings: - April

- Spring

- Gardens

- Apples

- Photographs

- Ethnography

- West Virginia -- Boone County -- Whitesville

- West Virginia -- Raleigh County -- Jarrolds Valley

Genre: Photographs

Ethnography

Notes: - Event: Visit with Elsie Rich.

Repository: American Folklife Center

Digital Id: <http://hdl.loc.gov/loc.afc/afccmns.mhc08510>

## AN APPLE TREE NEXT TO A COLONIAL-ERA HOUSE IN PORTLAND, MAINE'S LARGEST CITY



**Reference Link:** <http://www.loc.gov/item/2017882474/>

Contributor Names: Highsmith, Carol M., 1946-, photographer

Created / Published: 2017-09-10.

Subject Headings: - United States--Maine--Portland.

- America
- apple trees
- Apples
- Maine--Portland

Notes: - Title, date and keywords based on information provided by the photographer.

- Purchase; Carol M. Highsmith Photography, Inc.; 2017; (DLC/PP-2016:103-11).

- Forms part of: Carol M. Highsmith's America Project in the Carol M. Highsmith Archive.

- Credit line: Photographs in Carol M. Highsmith's America Project in the Carol M. Highsmith Archive, Library of Congress, Prints and Photographs Division.

Repository: Library of Congress Prints and Photographs Division Washington, D.C. 20540 USA

<http://hdl.loc.gov/loc.pnp/pp.print>

Digital Id: highsm 45726 //hdl.loc.gov/loc.pnp/highsm.45726



**APPLE TREES SUCH AS THESE IN THE ORCHARDS ABOVE GAYS MILLS, WISCONSIN, WHICH RANGE OVER A THOUSAND ACRES, ARE NOT THE SORT ONE SITS UNDER AS IN THE OLD SONG, "DON'T SIT UNDER THE APPLE TREE"**



**Reference Link:** <http://www.loc.gov/item/2016631495/>

**Contributor Names:** Highsmith, Carol M., 1946-, photographer

**Created / Published:** 2016-09-02.

**Subject Headings:** - United States--Wisconsin--Crawford County--Gays Mills

- America
- Apple orchards
- Orchards
- Gays Mills orchards
- Apple trees

**Genre:** Digital photographs--Color--2010-2020

**Notes:** - Title, date and keywords based on information provided by the photographer.

- They're low to the ground, almost like bushes, perfect for picking.
- Credit line: Photographs in the Carol M. Highsmith Archive, Library of Congress, Prints and Photographs Division.

- Purchase; Carol M. Highsmith Photography, Inc.; 2016; (DLC/PP-2016:103-1).

- Forms part of the Carol M. Highsmith Archive.

**Repository:** Library of Congress Prints and Photographs Division Washington, D.C. 20540 USA

<http://hdl.loc.gov/loc.pnp/pp.print>

**Digital Id:** highsm 40677 //hdl.loc.gov/loc.pnp/highsm.40677

## PUMPKIN PATCH NEAR LITCHFIELD, CONNECTICUT



**Reference Link:** <http://www.loc.gov/item/2012630736/>

Contributor Names: Highsmith, Carol M., 1946-, photographer

Created / Published: 2011 October.

Subject Headings: - United States--Connecticut--Litchfield

- America

- Pumpkin patches

Genre: Digital photographs--Color--2010-2020

Notes: - Title, date, and keywords provided by the photographer.

- Credit line: The George F. Landegger Collection of Connecticut Photographs in the Carol M. Highsmith's America, Library of Congress, Prints and Photographs Division.

- Gift; George F. Landegger; 2011; (DLC/PP-2011:166).

- Forms part of: George F. Landegger Collection of Connecticut Photographs in Carol M. Highsmith's America Project in the Carol M. Highsmith Archive.

Repository: Library of Congress Prints and Photographs Division Washington, D.C. 20540 USA

<http://hdl.loc.gov/loc.pnp/pp.print>

Digital Id: highsm 19328 //hdl.loc.gov/loc.pnp/highsm.19328



## **PUMPKIN PATCH ON MOULTON FARM NEAR MEREDITH, NEW HAMPSHIRE**



**Reference Link:** <http://www.loc.gov/item/2017884948/>

**Contributor Names:** Highsmith, Carol M., 1946-, photographer

**Created / Published:** 2017-09-22.

**Subject Headings:** - United States--New Hampshire--Meredith.

- America
- New Hampshire farms
- Pumpkins
- Pumpkin patches
- Moulton farm
- New Hampshire--Meredith

**Notes:** - Title, date and keywords based on information provided by the photographer.

- Purchase; Carol M. Highsmith Photography, Inc.; 2017; (DLC/PP-2016:103-10).

- Forms part of: Carol M. Highsmith's America Project in the Carol M. Highsmith Archive.

- Credit line: Photographs in Carol M. Highsmith's America Project in the Carol M. Highsmith Archive, Library of Congress, Prints and Photographs Division.

**Repository:** Library of Congress Prints and Photographs Division Washington, D.C. 20540 USA

<http://hdl.loc.gov/loc.pnp/pp.print>

**Digital Id:** highsm 48318 //hdl.loc.gov/loc.pnp/highsm.48318



## RIPENING PUMPKIN AND PUMPKIN BLOOMS



**Reference Link:** <http://www.loc.gov/item/cmns001321/>

Contributor Names: Boggs, Woody (Photographer)

Created / Published: 1998

Subject Headings: - Fall

- Harvests
- Pumpkins
- Photographs
- Ethnography
- West Virginia -- Raleigh County -- Pettry Bottom

Genre: Photographs

Ethnography

Notes: - Event: Harvest time.

Repository: American Folklife Center

Digital Id: <http://hdl.loc.gov/loc.afc/afccmns.wbc00208>

## PENNSYLVANIA PUMPKINS



**Reference Link:** <http://www.loc.gov/item/2015646634/>

**Summary:** Stereograph showing a man in a pumpkin patch gathering pumpkins as his dog watches.

**Contributor Names:** Keystone View Company.

**Created / Published:** Meadville, Pa. ; St. Louis, Mo. ; San Francisco, Cal. ; Toronto, Can. ; New York, N.Y. ; London, England : Keystone View Company, Manufacturers and Publishers, 1906 Dec 26.

**Subject Headings:** - Pumpkins--Pennsylvania--1900-1910

**Notes:** - H87923 U.S. Copyright Office.

- Copyright 1906 by Keystone View Company.

- No. 14139.

- Title from item.

**Repository:** Library of Congress Prints and Photographs Division Washington, D.C. 20540 USA

<http://hdl.loc.gov/loc.pnp/pp.print>

**Digital Id:** cph 3a18368 <http://hdl.loc.gov/loc.pnp/cph.3a18368>

[FARMER?]



**Reference Link:** <http://www.loc.gov/item/2016878300/>

Contributor Names: Harris & Ewing, photographer

Created / Published: [1936 July or August]

Subject Headings: - United States

Genre: Glass negatives

Notes: - Title devised by Library staff.

- Date based on date of negatives in same range.

- Gift; Harris & Ewing, Inc. 1955.

- General information about the Harris & Ewing Collection is available at <http://hdl.loc.gov/loc.pnp/pp.hec>

- Temp. note: Batch seven.

Repository: Library of Congress Prints and Photographs Division Washington, D.C. 20540 USA

<http://hdl.loc.gov/loc.pnp/pp.print>

Digital Id: [hec 33449](http://hdl.loc.gov/loc.pnp/hec.33449) //hdl.loc.gov/loc.pnp/hec.33449