

Image not found

[https://sites.msudenver.edu/tpswesternregion/wp-content/uploads/sites/476/2021/11/tps\\_logo-1.png](https://sites.msudenver.edu/tpswesternregion/wp-content/uploads/sites/476/2021/11/tps_logo-1.png)

## ALBUM PRIMARY SOURCES AND TEACHING ONLINE WEBINAR SERIES RECORDINGS

### Album Description

The Teaching with Primary Sources Western Region and the TPS Teachers Network at Metropolitan State University of Denver are hosting a series of professional development webinars starting Tuesday, March 31, 2020 and going until Thursday, May 14th, 2020.

Each webinar will be from 4:00 - 5:00pm (Mountain Time) on Tuesday, Wednesday and Thursday.

Recordings of the series can be found in this album.

Attend the live events here:

Zoom: <https://zoom.us/j/340464136>

Password: Primary1

(Schedule and webinar link subject to change - Contact  Keith Patterson  Kile Clabaugh or  Mary Johnson for up to date information)

bestof

## 'INTRODUCTION TO THE TPS TEACHERS NETWORK'

### Introduction to the TPS Teachers Network

Presentation: [bit.ly/introtpstn](https://bit.ly/introtpstn)

Mary Johnson, Coordinator  
TPS Teachers Network  
[johnsonmaryj@mac.com](mailto:johnsonmaryj@mac.com)



Take a quick 20-minute tour of the Teaching with Primary Sources (TPS) Teachers Network, a professional social media platform designed to connect educators everywhere who share an interest in teaching with primary sources from the Library of Congress and beyond. Learn how to navigate, explore, join groups, get help, and contribute to the conversations around primary sources and related teaching strategies. Useful for new users, infrequent visitors, and even as a review for active members! Hosted by Mary Johnson.

The presentation slide deck can be viewed here:

[https://docs.google.com/presentation/d/13bmoLe\\_jp3Ya6Afc4JSHNEwlqaC8FxcfS8TwCUdTZ14/edit?usp=sharing](https://docs.google.com/presentation/d/13bmoLe_jp3Ya6Afc4JSHNEwlqaC8FxcfS8TwCUdTZ14/edit?usp=sharing)

## 'CREATE PRIMARY SOURCE SETS WITH THE TPS TEACHERS NETWORK ALBUM TOOL'



'Create, curate, and export your own customized primary source sets online in this hands-on session using the TPS Teachers Network album tool. Portable, easy, free, classroom-ready, shareable! Hosted by Mary Johnson.

The presentation slide deck can be viewed here: <https://docs.google.com/presentation/d/1kDHJHLCKge-MzDuDVeZh0WkZvFHS15LZRddhxZKuINU/edit?usp=sharing>

## 'USING SCREENCASTIFY FOR REMOTE LEARNING'



Laura Israelsen and Michelle Pearson give an overview of how to set-up and use the Screencastify app in your online classroom. They also provide several quick and easy teaching strategies which will help you and your students start screen recording in no time.

The presentation slide deck can be viewed here:

<https://docs.google.com/presentation/d/1hEitDGMgUTo3hpQVyiAWAdt8M3CKzDSZfyZjREhDoVM/edit?usp=sharing>

## 'PRIMARY SOURCE PADLET STRATEGIES'



Laura Israelsen and Michelle Pearson show you the ins and outs of using the Padlet application in your online learning. From setup, to assessment, Michelle and Laura walk you through the process of how to make your job as a teacher a breeze and keep your students engaged.

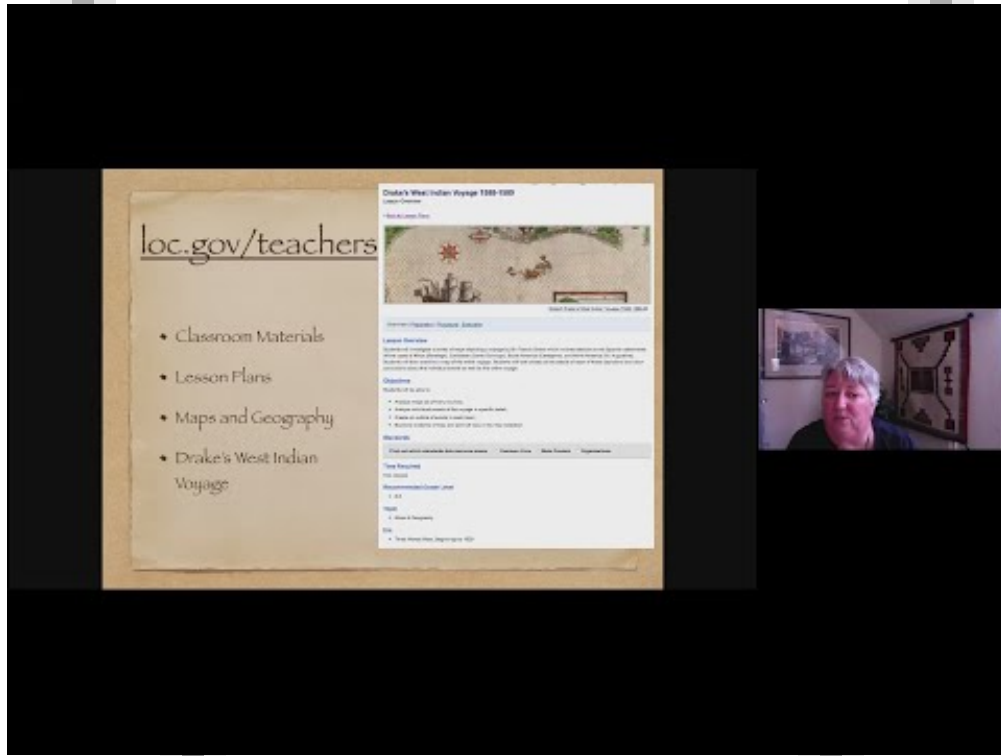
The presentation slide deck can be viewed here:

<https://docs.google.com/presentation/d/1hEitDGMgUTo3hpQVyiAWAdt8M3CKzDSZfyZjREhDoVM/edit?usp=sha>

Image not found

[https://sites.msudenver.edu/tpswesternregion/wp-content/uploads/sites/476/2021/11/tps\\_logo-1.png](https://sites.msudenver.edu/tpswesternregion/wp-content/uploads/sites/476/2021/11/tps_logo-1.png)

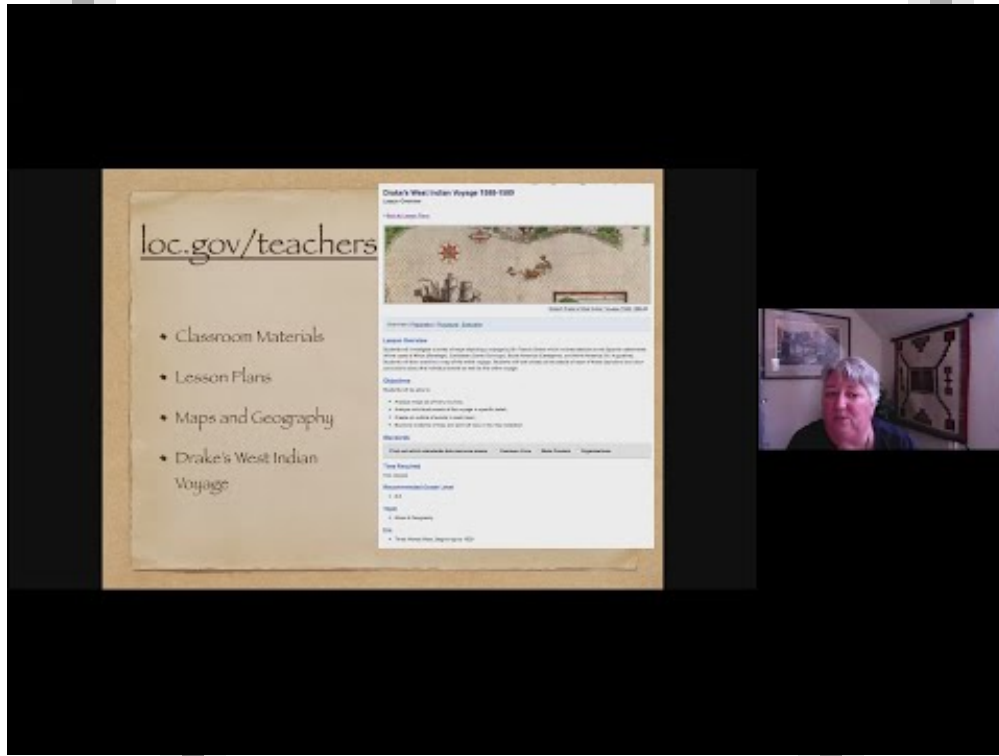
## 'ESCAPE 2020: STOW-AWAY ON A 1585 PRIMARY SOURCE CRUISE (PART 1)'



'Sherrie Metzger-Galloway leads you on an online voyage using primary source maps from the Library of Congress. She also shares quick and easy map analysis strategies that can be used in the online classroom.'

The presentation slide deck can be viewed here: <https://bit.ly/TPSEscape2020>

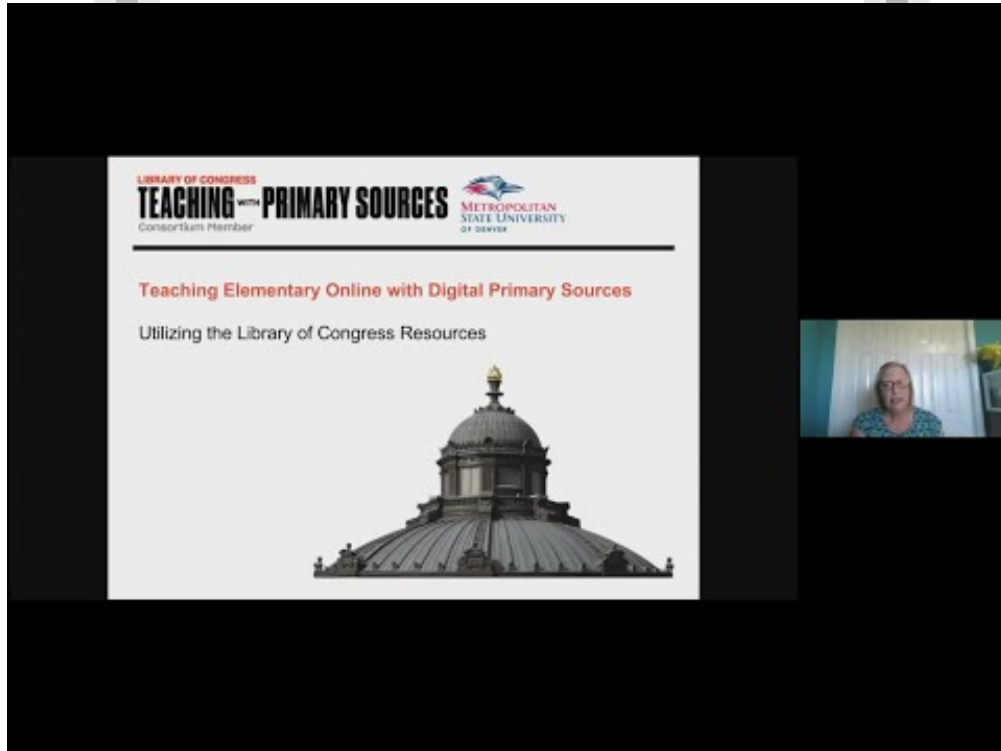
## 'ESCAPE 2020: STOW-AWAY ON A 1585 PRIMARY SOURCE CRUISE (PART 2)'



'Sherrie Metzger-Galloway leads you on an online voyage using primary source maps from the Library of Congress. In this session she provides practical strategies for finding maps in the Library of Congress online collections, as well as tips and tricks to use them in the classroom.

The slide deck from the presentation can be viewed here: <https://bit.ly/TPSEscape2020>'

## **'TEACHING ELEMENTARY ONLINE WITH DIGITAL PRIMARY SOURCES - (PART 1) LIBRARY OF CONGRESS RESOURCES'**



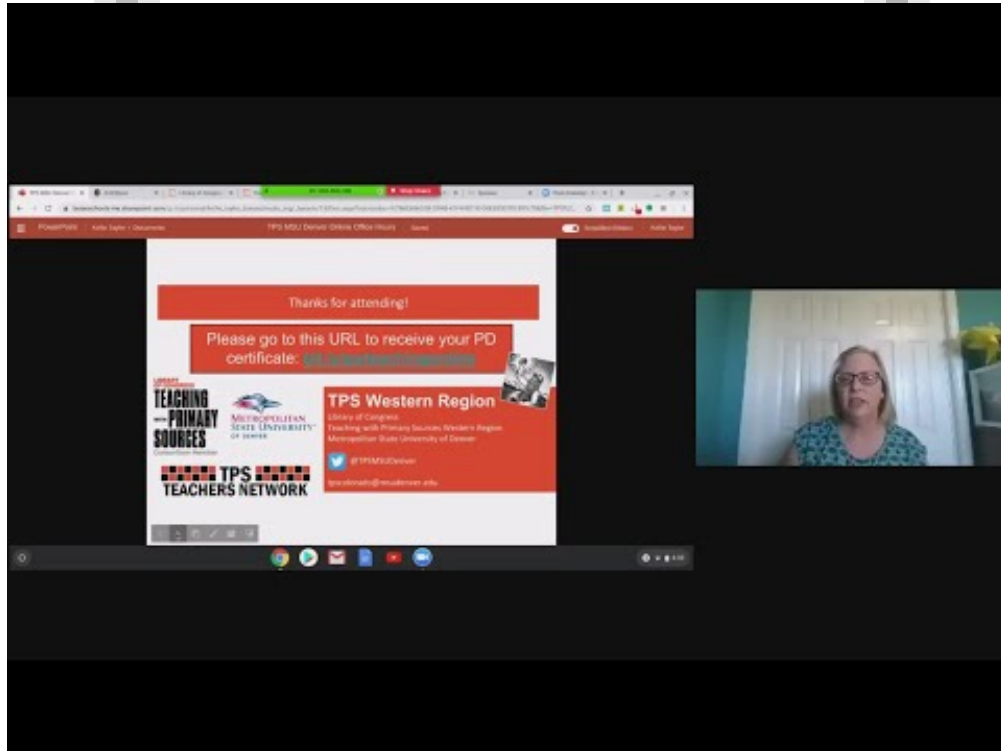
'Third grade teacher and past Einstein Distinguished Educator Fellow at the Library of Congress Kelli Taylor discusses resources from LOC.gov for Elementary teachers. She discusses classroom materials from the Library of Congress including lesson plans, primary source sets, teaching tools, and much more!'



Image not found

[https://sites.msudenver.edu/tpswesternregion/wp-content/uploads/sites/476/2021/11/tps\\_logo-1.png](https://sites.msudenver.edu/tpswesternregion/wp-content/uploads/sites/476/2021/11/tps_logo-1.png)

## 'TEACHING ELEMENTARY ONLINE WITH DIGITAL PRIMARY SOURCES. PART 2 - STRATEGIES AND RESOURCES'



Third grade teacher and past Einstein Distinguished Educator Fellow at the Library of Congress Kelli Taylor discusses strategies with primary sources for elementary teachers. She discusses strategies for collecting and using primary sources in the classroom.

The presentation slide deck can be viewed here:

[https://docs.google.com/presentation/d/1G255V\\_ZqM\\_8QXYgXtECgUyzUD0-YT8lTPNWG\\_yKAciQ/edit?usp=sharing](https://docs.google.com/presentation/d/1G255V_ZqM_8QXYgXtECgUyzUD0-YT8lTPNWG_yKAciQ/edit?usp=sharing)

## HISTORY DETECTIVES: ACTIVITIES FOR THE ELEMENTARY CLASSROOM (PART 2)



Join MSU Denver Professor of History Dr. Todd Laugen as he shares primary source strategies for the elementary classroom from his book *Colorado History Detectives*.

In part 2 he models a historical inquiry with the question..."Why do guys want to be cowboys?".

The presentation slide deck can be viewed here:

<https://docs.google.com/presentation/d/1WtK3IBdCZ4n5DuA-q8Ci1M9QYbUyyIK1SsdHFJk0PgQ/edit?usp=sharing>

Dr. Laugen's book co-authored with Dr. Meg Frisbee can be access for free at:

<https://coloradohistorydetectives.pressbooks.co>

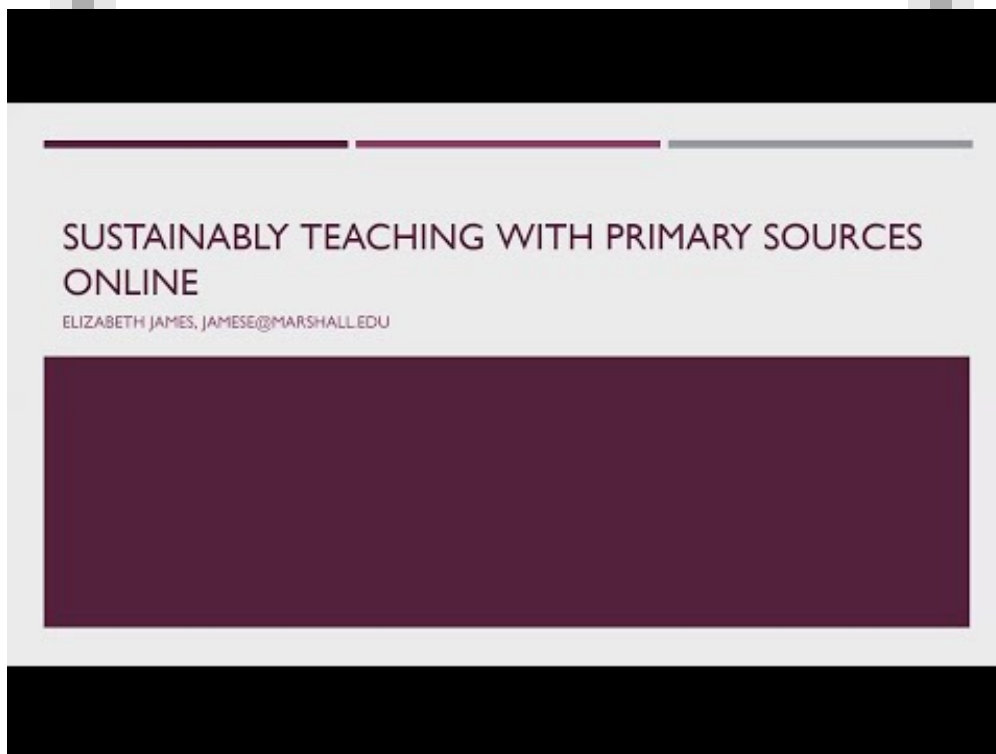
Image not found

[https://sites.msudenver.edu/tpswesternregion/wp-content/uploads/sites/476/2021/11/tps\\_logo-1.png](https://sites.msudenver.edu/tpswesternregion/wp-content/uploads/sites/476/2021/11/tps_logo-1.png)

**Teaching Notes:**

Thank you.

## PRIMARY SOURCES LTE



This session focuses on a number of primary source strategies that can be quickly adapted for online learning.

1:15 - Elizabeth James, Archivist and Digital Preservation Librarian at Marshall University shares strategies to sustainably teach primary sources online.

Slide deck can be viewed here:

<https://docs.google.com/presentation/d/1Pks1nGOOsy3EzCsTXg4kLNq6Rv8VwRBeEJQxVbtdFrw/edit?usp=sharing>

24:02 - Judy Bee, Associate Director of TPS Midwest Region at Illinois State University shares the Circle of Viewpoints strategy with a number of tips and adaptations for online learning.

Slide deck can be viewed here:

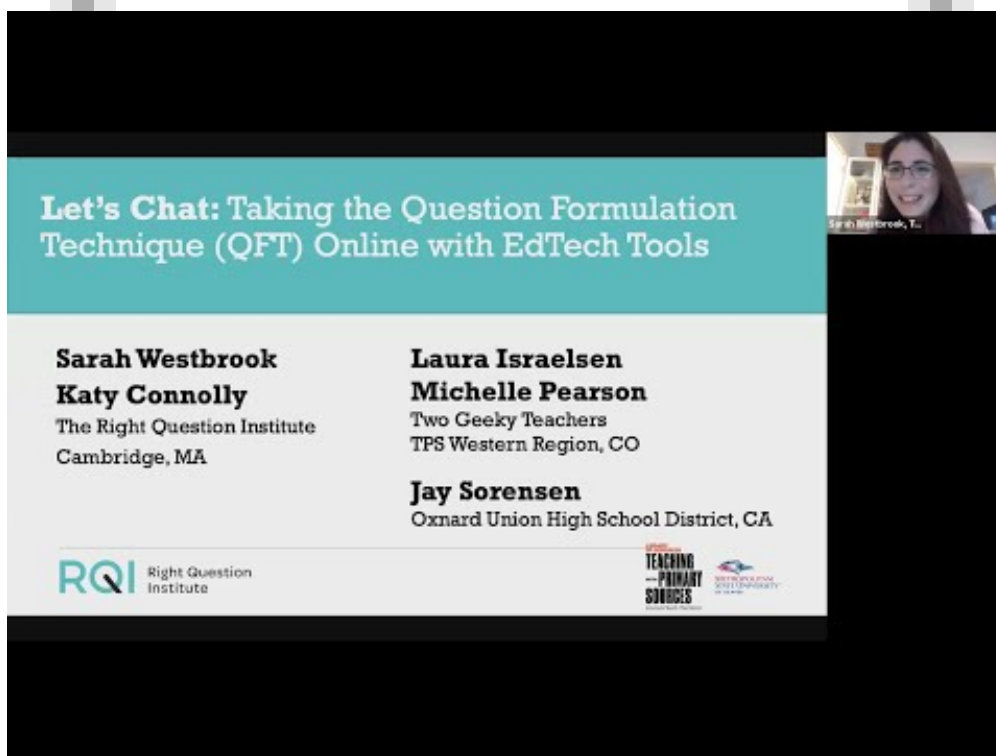
[https://docs.google.com/presentation/d/1clFN\\_17D7WX\\_zccsDpvF6nudA1foq50-hc5CD0MgniM/edit?usp=sharing](https://docs.google.com/presentation/d/1clFN_17D7WX_zccsDpvF6nudA1foq50-hc5CD0MgniM/edit?usp=sharing)

40:41 - Amy Wilkinson, TPS Program Director and Instructor at Southern Illinois University Edwardsville shares how to use primary sources to reflect on the world around us.

Slide deck can be viewed here:

[https://docs.google.com/presentation/d/1clFN\\_17D7WX\\_zccsDpvF6nudA1foq50-hc5CD0MgniM/edit?usp=sharing](https://docs.google.com/presentation/d/1clFN_17D7WX_zccsDpvF6nudA1foq50-hc5CD0MgniM/edit?usp=sharing)

## LET'S CHAT! TAKING THE QFT ONLINE WITH EDTECH TOOLS



Join Right Question Institute and EdTech professionals for using the Question Formulation Technique in an online setting.

### Presenters:

Sarah Westbrooke, Director of Professional Learning at RQI

Katy Connolly, Education Program Associate (RQI)

Laura Israelsen, Teaching Librarian

Michelle Pearson, Social Studies Educator

Jay Sorensen, Educational Technology Coordinator

Slide deck and all resources can be accessed at: <http://bit.ly/RQIWRTPS>

<https://rightquestion.org>

<http://twogeekyteachers.com>

<https://www.msudenver.edu/tpswesternregion>

<https://tpsteachersnetwork.org>

### Padlet Example:

Group 1: <https://padlet.com/sarahwestbrook1/QFTGroup1>

Group 2: <https://padlet.com/sarahwestbrook1/QFTGroup2>

Group 3: <https://padlet.com/sarahwestbrook1/QFTGroup3>

Image not found

[https://sites.msudenver.edu/tpswesternregion/wp-content/uploads/sites/476/2021/11/tps\\_logo-1.png](https://sites.msudenver.edu/tpswesternregion/wp-content/uploads/sites/476/2021/11/tps_logo-1.png)

Google Doc example:

<https://docs.google.com/document/d/1ti5oPgBZ-F6-cdBxTXf3MGIAUdk2V57Lh2IH33LSYtw/edit>

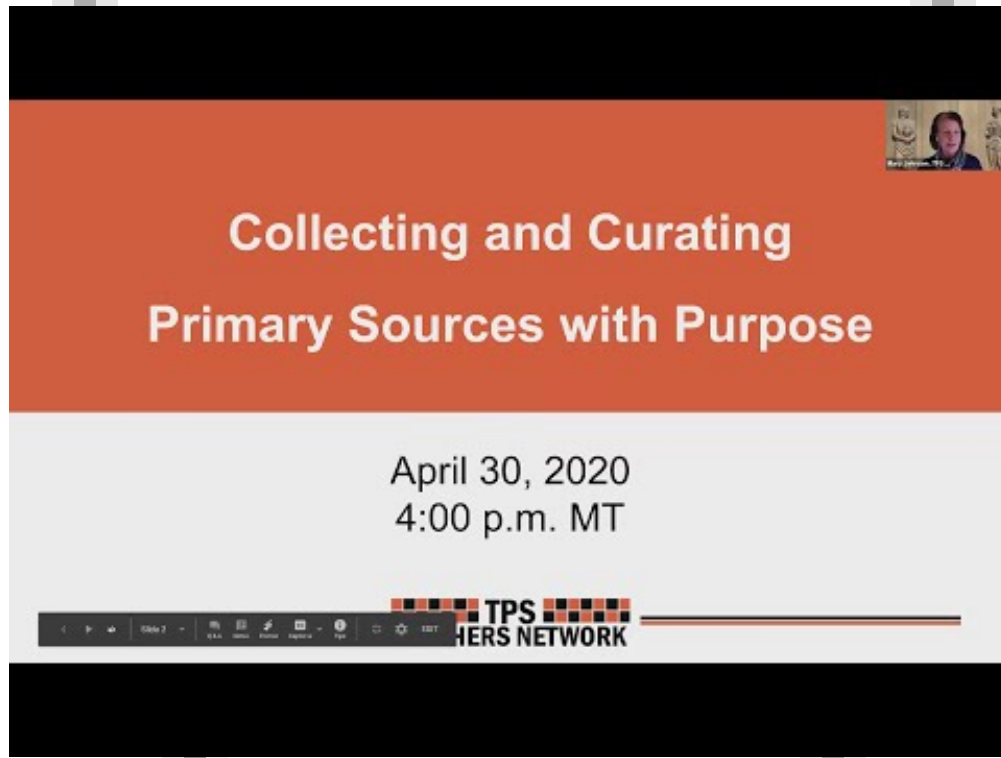
Flipgrid Example:

<https://flipgrid.com/7fd4dccc>

Make Just One Change: Teaching Students to Ask Their Own Questions

<https://rightquestion.org/resources/make-just-one-change/>

## COLLECTING AND CURATING PRIMARY SOURCES WITH PURPOSE (PART 1)



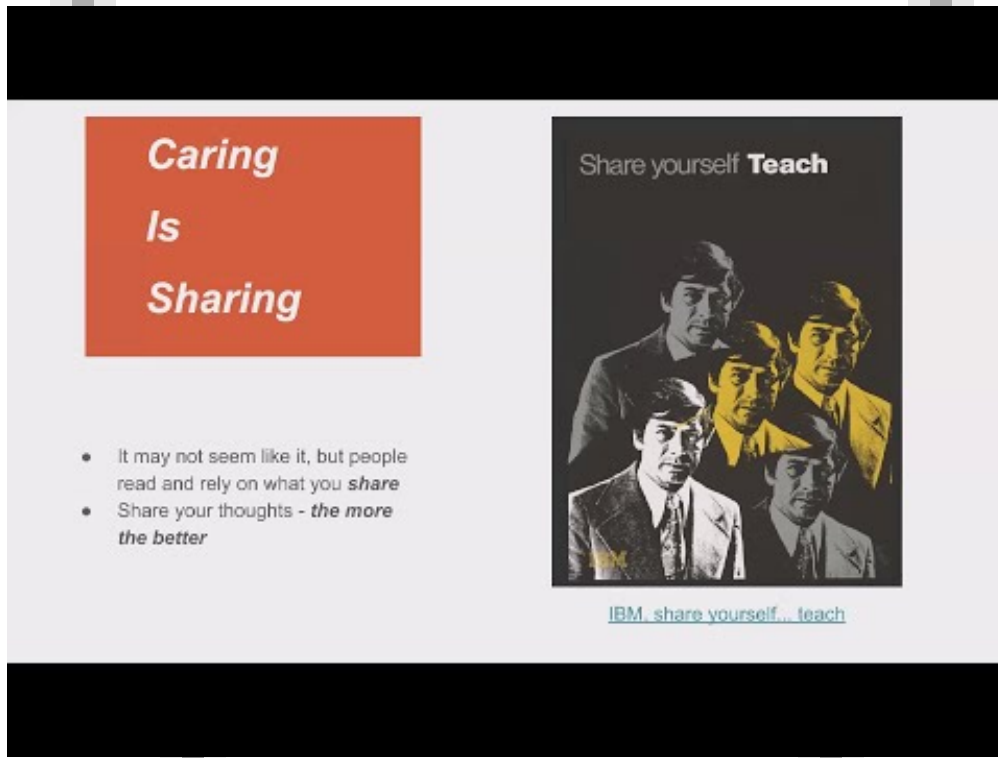
Join us to learn about how to select, curate, and share your primary sources from the Library of Congress collections.

In part one TPS Teacher Network Coordinator Mary Johnson models the process of selecting primary sources for the online classroom.

The presentation slide deck can be viewed here:

[https://docs.google.com/presentation/d/199qEz1voSOV1NJq\\_qRgxFhG-nbHjs9o\\_baFJ1e7cbcI/edit?usp=sharing](https://docs.google.com/presentation/d/199qEz1voSOV1NJq_qRgxFhG-nbHjs9o_baFJ1e7cbcI/edit?usp=sharing)

## COLLECTING AND CURATING PRIMARY SOURCES WITH PURPOSE (PART 2)



Join us to learn about how to select, curate, and share your primary sources from the Library of Congress collections.

In part two, Keith Patterson and Kile Clabaugh from the TPS Western Region discuss the process of sharing primary sources in and beyond the TPS Teachers Network. Kile also models the process of sharing these resources in multiple formats using Adobe Spark.

The presentation slide deck can be viewed here:

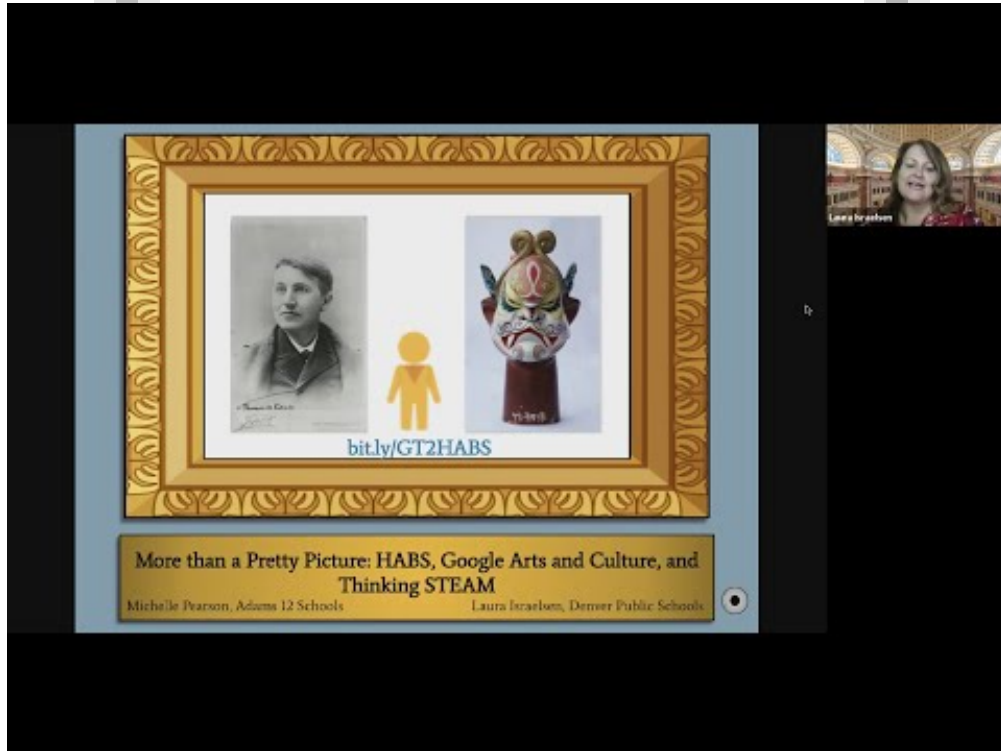
[https://docs.google.com/presentation/d/199qEzIvoSOVINJq\\_qRgxFhG-nbHjs9o\\_baFJ1e7cbcI/edit?usp=sharing](https://docs.google.com/presentation/d/199qEzIvoSOVINJq_qRgxFhG-nbHjs9o_baFJ1e7cbcI/edit?usp=sharing)



Image not found

[https://sites.msudenver.edu/tpswesternregion/wp-content/uploads/sites/476/2021/11/tps\\_logo-1.png](https://sites.msudenver.edu/tpswesternregion/wp-content/uploads/sites/476/2021/11/tps_logo-1.png)

## **VIRTUAL PLACES AND PRIMARY SOURCES IN THE CLASSROOM: HABS AND GOOGLE ARTS AND CULTURE**



Join the Two Geeky Teachers (Michelle Pearson and Laura Israelson) as they help take your classroom on a virtual field trip using resources from the Library of Congress Historic American Buildings Survey (HABS) collections and Google Arts and Culture.

They also share a number of classroom ready connections to social studies, STEAM, and more.

The slide deck can be found here: <http://twogeekyteachers.com>

Library of congress Historic American Buildings Survey (HABS) Collection:

<https://www.loc.gov/collections/historic-american-buildings-landscapes-and-engineering-records/about-this-collection/>

Google Arts and Culture:

<https://artsandculture.google.com/>

## **TURKEYS, CHILI PEPPERS AND CORN: ANALYZING AN HISTORIC CODEX (PART 1)**



Join past Teacher in Residence at the Library of Congress, and educational consultant Sherrie Galloway as she shares the amazing Huexotzinco Codex and the numerous ways it can be used in the classroom.

In part one Sherrie leads a guided inquiry exploring the interesting symbols and their meanings using the Library of Congress Primary Source Analysis tool.

The presentation slide deck can be accessed here:

<https://drive.google.com/file/d/1S1coZvPs8jYxFQsdVfHwU8QOF1MCG2M7/view?usp=sharing>

## **TURKEYS, CHILI PEPPERS AND CORN: ANALYZING AN HISTORIC CODEX (PART 2)**



Join past Teacher in Residence at the Library of Congress, and educational consultant Sherrie Galloway as she shares the amazing Huexotzinco Codex and the numerous ways it can be used in the classroom.

In part two Sherrie continues exploring the codex and then guides you through where to find this and other related resources for teachers at the Library of Congress website and the World Digital Library.

The presentation slide deck can be accessed here:

<https://drive.google.com/file/d/1S1coZvPs8jYxFQsdVfHwU8QOF1MCG2M7/view?usp=sharing>

## PHOTOGRAPHY AND PRIMARY SOURCES (PART 1)



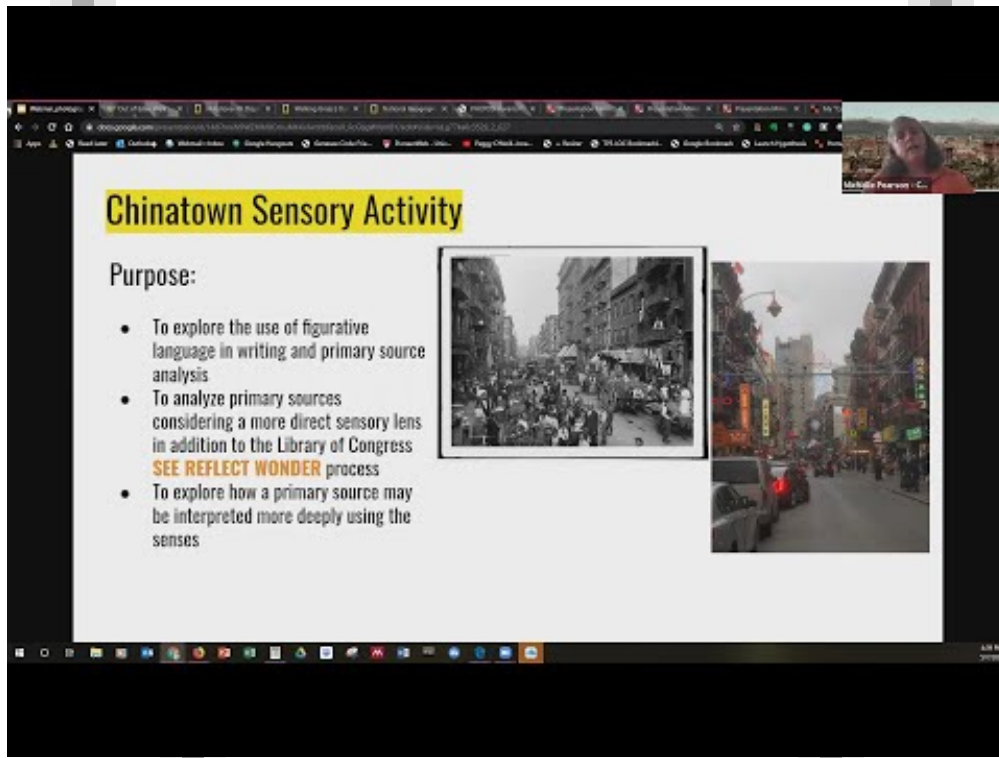
Join Executive Director of the TPS Western Region Peggy O'Neill-Jones and the Two Geeky Teachers Laura Israelsen and Michelle Pearson as they explore how the disciplines of photography and photojournalism help teachers analyze and create new primary sources.

In part one, aspects of photography are discussed along with teaching strategies that tie these concepts to the classroom.

The presentation slide deck along with links to the resources discussed can be accessed here:

[https://bit.ly/PrimaryPhoto'](https://bit.ly/PrimaryPhoto)

## PHOTOGRAPHY AND PRIMARY SOURCES (PART 2)



Join Executive Director of the TPS Western Region Peggy O'Neill-Jones and the Two Geeky Teachers Laura Israelsen and Michelle Pearson as they explore how the disciplines of photography and photojournalism help teachers analyze and create new primary sources.

In part two, additional aspects of photography are discussed along with teaching strategies that tie these concepts to the classroom.

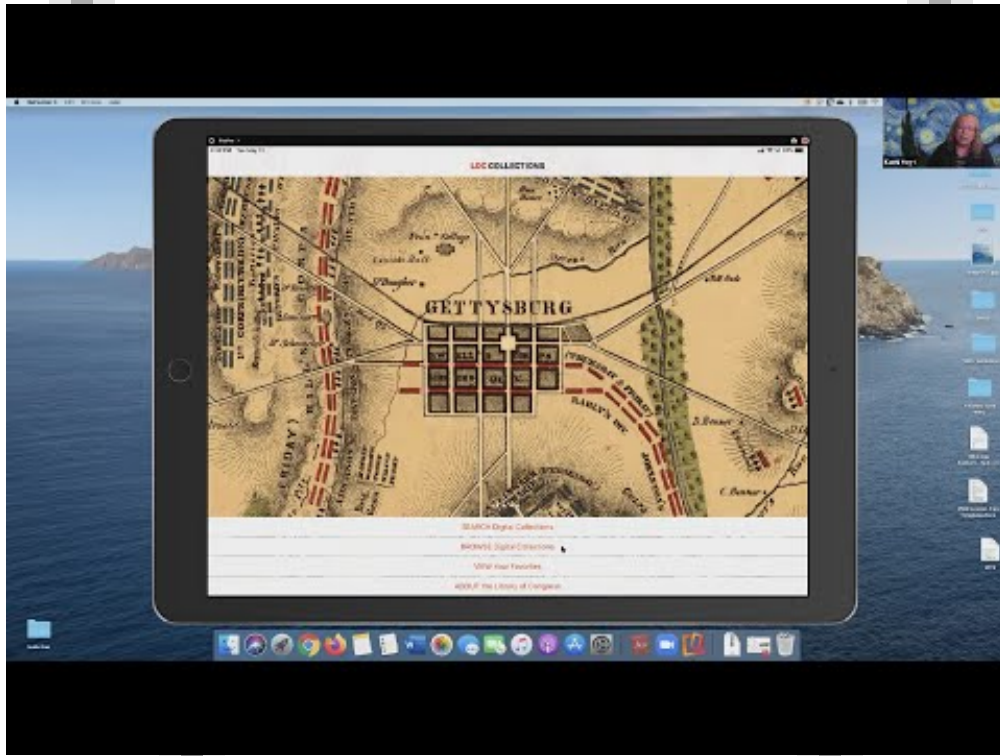
The presentation slide deck along with links to the resources discussed can be accessed here:

[https://bit.ly/PrimaryPhoto'](https://bit.ly/PrimaryPhoto)

Image not found

[https://sites.msudenver.edu/tpswesternregion/wp-content/uploads/sites/476/2021/11/tps\\_logo-1.png](https://sites.msudenver.edu/tpswesternregion/wp-content/uploads/sites/476/2021/11/tps_logo-1.png)

## PAIRING LITERATURE WITH PRIMARY SOURCES FOR REMOTE LEARNING



Learn the power of pairing literature with primary sources while teaching online.

Presented by: Melissa Fox - Education Media Specialist

Ruth Ferris - K-6 Librarian

Kathi Hoyt - Education Media Specialist

Program:

How to use SeeSaw with kids

Connecting Primary Sources and Children's Literature

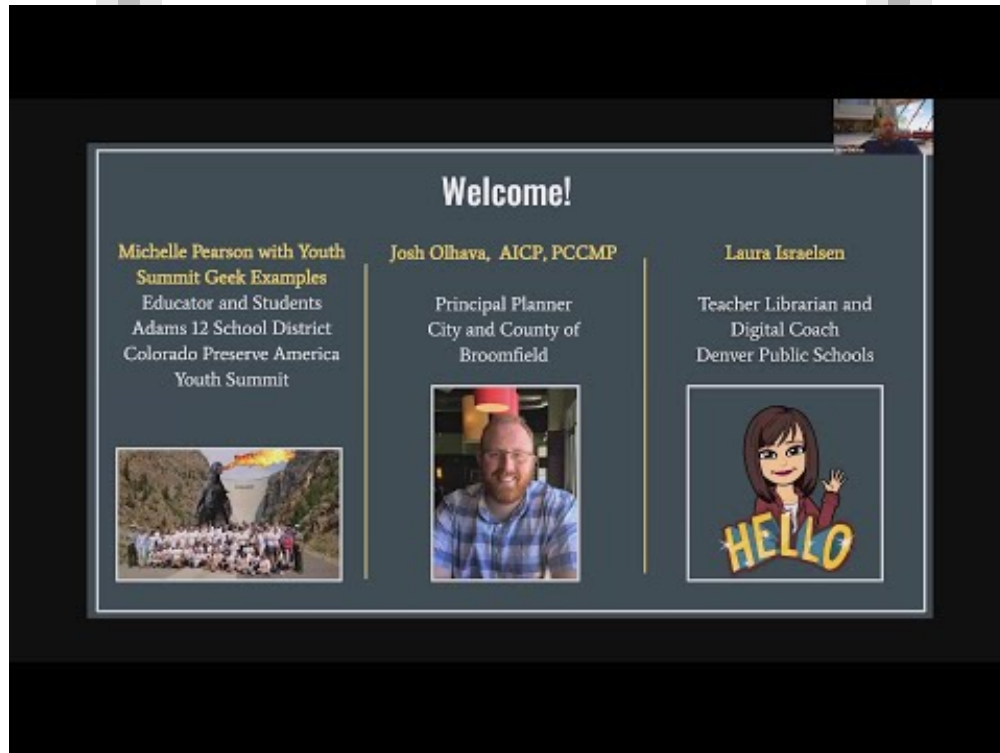
Library of Congress App, Student Discovery Sets, Reflector

Presentation slide deck and teaching materials can be found here (Google Drive Folder):

<http://bit.ly/SEESAWLITLOC>



## APP SMASHING: CREATING YOUR OWN MAPS WITH PRIMARY SOURCES AND DIGITAL TOOLS



Learn how to navigate and Use Google My Maps with students, Explore how a community, a classroom, and a wild idea is making a difference for their community using Primary Sources and Historic Places.

Preseters:

Josh Olhava, AICP, PCCMP, Principal Planner City and County of Broomfield Colorado

Two Geeky Teachers:

Laura Israelsen, Teacher Librarian

Michelle Pearson, Social Studies Educator

Presentation slide deck can be accessed here:

[https://docs.google.com/presentation/d/1Ehc0CoyJldlw8Uf6bl\\_VpPPem87a430V3bp9GVL7Dak/edit?usp=sharing](https://docs.google.com/presentation/d/1Ehc0CoyJldlw8Uf6bl_VpPPem87a430V3bp9GVL7Dak/edit?usp=sharing)

Image not found

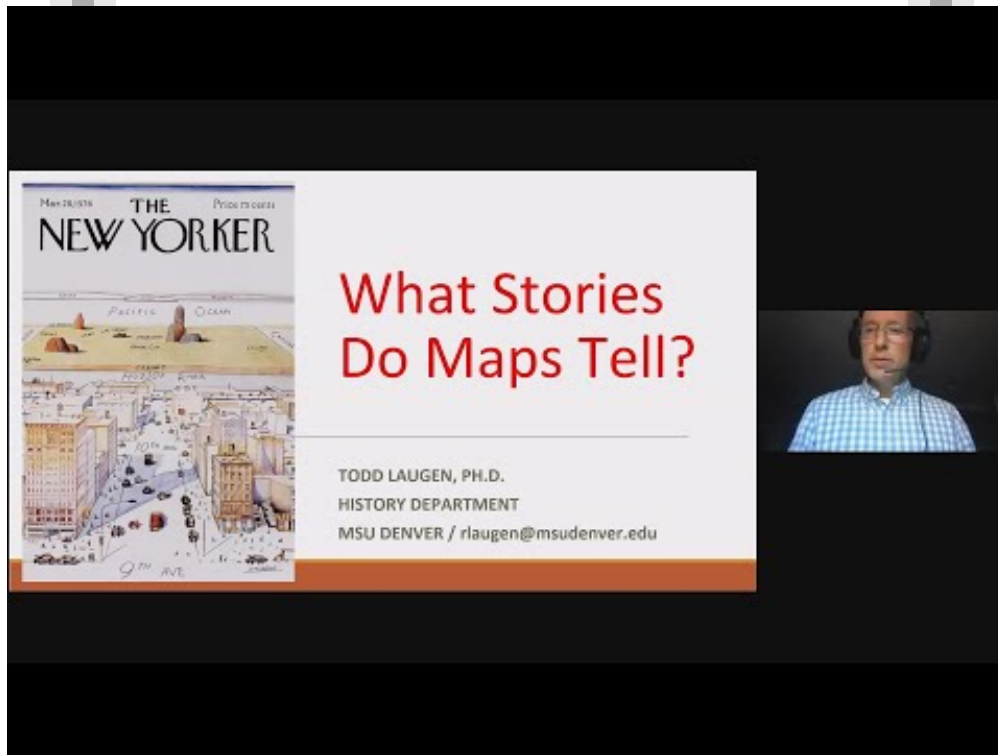
[https://sites.msudenver.edu/tpswesternregion/wp-content/uploads/sites/476/2021/11/tps\\_logo-1.png](https://sites.msudenver.edu/tpswesternregion/wp-content/uploads/sites/476/2021/11/tps_logo-1.png)

### Teaching Notes:

Thank you so much for hosting and recording these webinars! So incredibly helpful!!!



## 'HISTORY DETECTIVES: ACTIVITIES FOR THE ELEMENTARY CLASSROOM (PART 1)'



Join MSU Denver Professor of History Dr. Todd Laugen as he shares primary source strategies for the elementary classroom from his book Colorado History Detectives.

In part 1 he discusses teaching historical and geographic literacy by asking the question..."why is Colorado a rectangle?".

The presentation slide deck can be viewed here:

<https://docs.google.com/presentation/d/1WtK3IBdCZ4n5DuA-q8Ci1M9QYbUyyIK1SsdHFJk0PgQ/edit?usp=sharing>

Dr. Laugen's book co-authored with Dr. Meg Frisbee can be access for free at:

<https://coloradohistorydetectives.pressbooks.co>

## PRIMARY SOURCES, THE ARS AND ADOBE SPARK (PART 2)



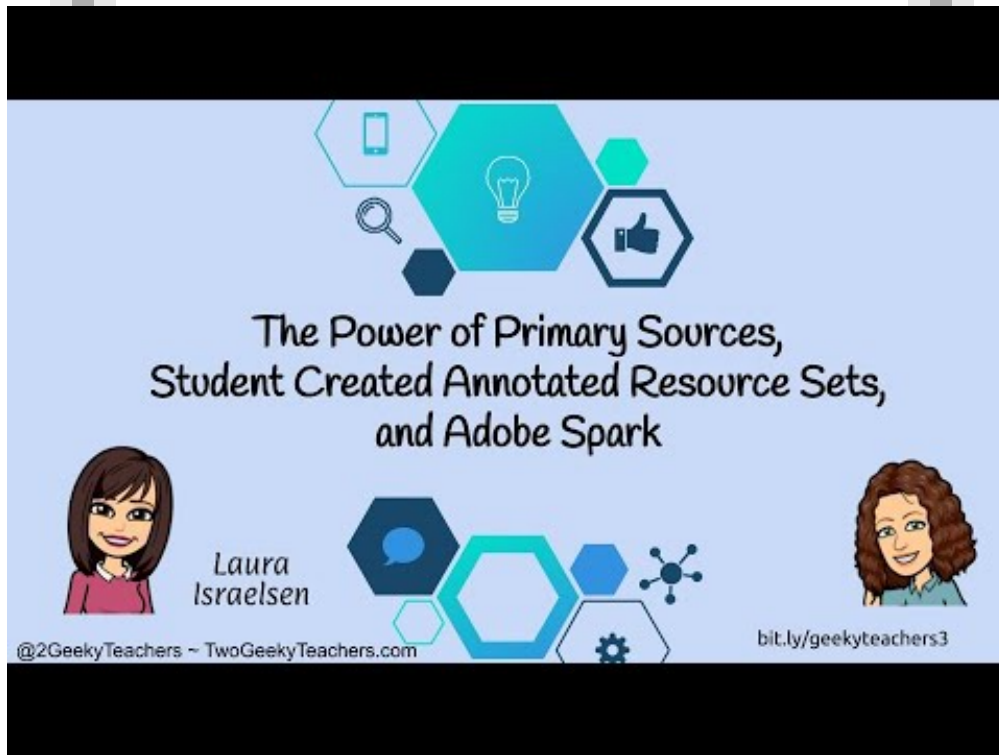
Join Laura Israelsen and Michelle Pearson as they demonstrate how to use an annotated resource set (ARS) as a template to collect primary sources for research.

In part two, information and resources from the ARS are used in a live demonstration to create an Adobe Spark presentation.

View the slide deck from the presentation here:

[https://docs.google.com/presentation/d/1kbTdQV-J9awhWSpBJb91m1TyOXwS4\\_JIPxSv8TB2A-4/edit?usp=sharing](https://docs.google.com/presentation/d/1kbTdQV-J9awhWSpBJb91m1TyOXwS4_JIPxSv8TB2A-4/edit?usp=sharing)

## PRIMARY SOURCES, THE ARS AND ADOBE SPARK (PART 1)



Join Laura Israelsen and Michelle Pearson as they demonstrate how to use an annotated resource set (ARS) as a template to collect primary sources for research.

In part one, they walk step by step through the process of creating an ARS in preparation to use the information and resources in an Adobe Spark presentation.

View the slide deck from the presentation here:

[https://docs.google.com/presentation/d/1kbTdQV-J9awhWSpBJb91m1TyOXwS4\\_JIPxSv8TB2A-4/edit?usp=sharing](https://docs.google.com/presentation/d/1kbTdQV-J9awhWSpBJb91m1TyOXwS4_JIPxSv8TB2A-4/edit?usp=sharing)

Image not found

[https://sites.msudenver.edu/tpswesternregion/wp-content/uploads/sites/476/2021/11/tps\\_logo-1.png](https://sites.msudenver.edu/tpswesternregion/wp-content/uploads/sites/476/2021/11/tps_logo-1.png)

## **CREATING PURPOSEFUL LEARNING ENVIRONMENTS (PART 2)**

### *PART 2*

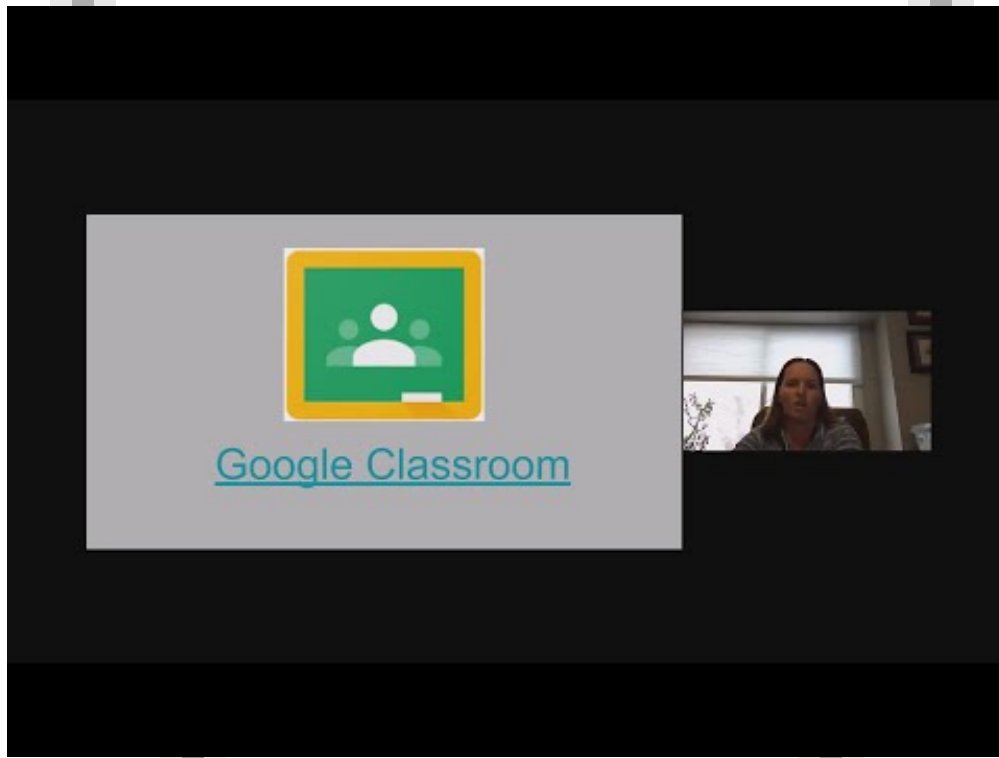
Join Dr. Rolly Schendel as he shares powerful strategies on how to create purposeful learning environments - both in your face-2-face and online classroom.

## CREATING PURPOSEFUL LEARNING ENVIRONMENTS (PART 1)



Join Dr. Rolly Schendel as he shares powerful strategies on how to create purposeful learning environments - both in your face-2-face and online classroom.

## PRIMARY SOURCES AND GOOGLE CLASSROOM



Join Kelly Jones-Wagy to learn more about setting up and using Google Classroom. She discussing setting up you classroom, using Google Meet to stay connected to your students, and many other tips and tricks to help manage your online learning space.

## THE POWER OF PRIMARY SOURCES AND PEAR DECK (PART 2)



In Part 2 Michelle Pearson models how to use Pear Deck to teach an inquiry lesson online using primary sources. She also shares useful templates and resources to help you quickly get started using Pear Deck in your online classroom.

Image not found

[https://sites.msudenver.edu/tpswesternregion/wp-content/uploads/sites/476/2021/11/tps\\_logo-1.png](https://sites.msudenver.edu/tpswesternregion/wp-content/uploads/sites/476/2021/11/tps_logo-1.png)

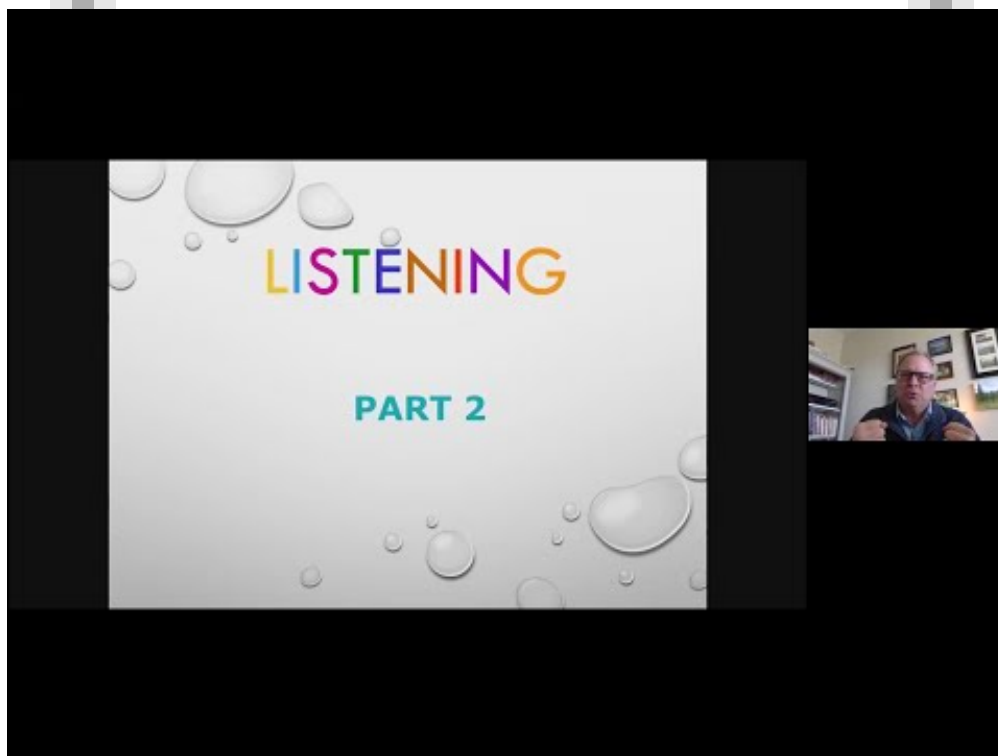
## THE POWER OF PRIMARY SOURCES AND PEAR DECK (PART 1)



Part 1 includes an overview by Laura Israelson setting up Pear Deck, student view, teacher view, and more.



## **LISTENING SKILLS FOR CONTENT ACCESS IN REMOTE SETTINGS (PART 2)**



Join Dr. Rolly Schendel to build your students listening skills using proven methods for online learning. In this segment Rolly continues working the levels of listening protocol using primary source audio from the Library of Congress. Ideas for purposefully introducing listening skills into the classroom are also discussed.

View the presentation slide deck here:

[https://docs.google.com/presentation/d/1CZkcN\\_KuSyIE6xd3OXtIWVXlhJbwXV1iRlH9tWC4wzw/edit?usp=sharing](https://docs.google.com/presentation/d/1CZkcN_KuSyIE6xd3OXtIWVXlhJbwXV1iRlH9tWC4wzw/edit?usp=sharing)

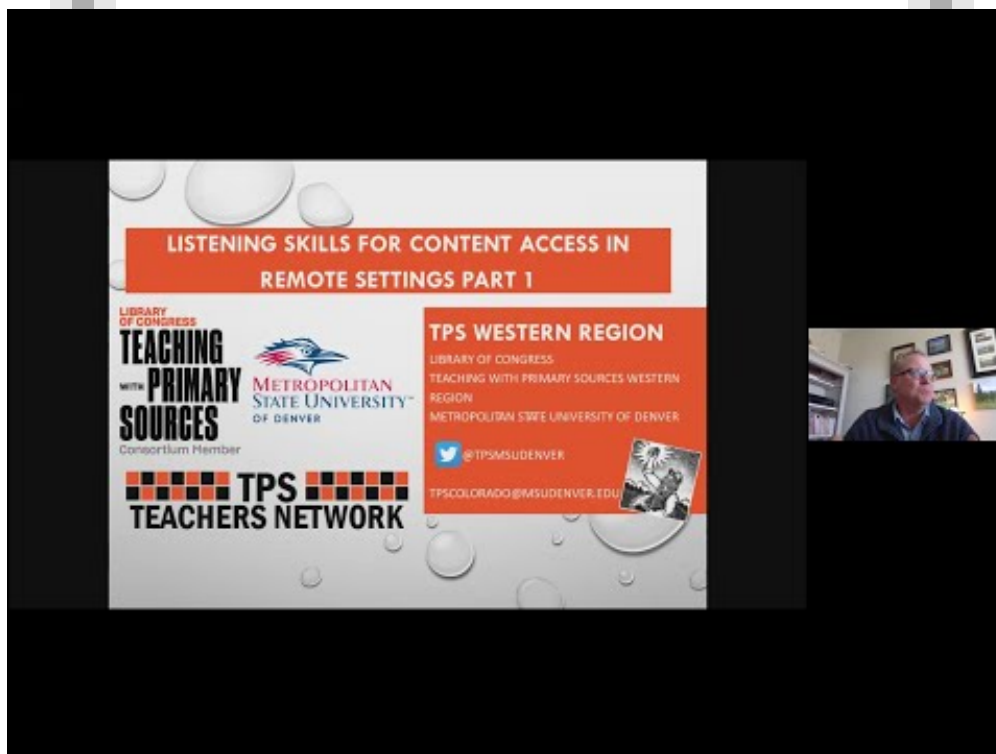
Please note we experienced internet connectivity issues during the live event and so there are quality issues in the recording.

Please contact us if you have questions.

Image not found

[https://sites.msudenver.edu/tpswesternregion/wp-content/uploads/sites/476/2021/11/tps\\_logo-1.png](https://sites.msudenver.edu/tpswesternregion/wp-content/uploads/sites/476/2021/11/tps_logo-1.png)

## LISTENING SKILLS FOR CONTENT ACCESS IN REMOTE SETTINGS (PART 1)



Join Dr. Rolly Schendel to build your students listening skills using proven methods for online learning. In this segment Rolly introduces the levels of listening protocol and models it's use with primary source audio from the Library of Congress.

View the presentation slide deck here:

[https://docs.google.com/presentation/d/1CZkcN\\_KuSyIE6xd3OXtIWVXlhJbwXV1iRIH9tWC4wzw/edit?usp=sharing](https://docs.google.com/presentation/d/1CZkcN_KuSyIE6xd3OXtIWVXlhJbwXV1iRIH9tWC4wzw/edit?usp=sharing)

Image not found

[https://sites.msudenver.edu/tpswesternregion/wp-content/uploads/sites/476/2021/11/tps\\_logo-1.png](https://sites.msudenver.edu/tpswesternregion/wp-content/uploads/sites/476/2021/11/tps_logo-1.png)

### Teaching Notes:

Terrific. I'll pass the word on and they will inquire. Seems to be this is an amazing way to meet the requirements, extraordinary times or not. Thank you!

Image not found

[https://sites.msudenver.edu/tpswesternregion/wp-content/uploads/sites/476/2021/11/tps\\_logo-1.png](https://sites.msudenver.edu/tpswesternregion/wp-content/uploads/sites/476/2021/11/tps_logo-1.png)

### Teaching Notes:



Neme Alperstein

We will generate a certificate with clock hours if attendees attend the webinar and fill out a quick reflection linked at the end of the webinar. We can't guarantee that this certificate will be accepted for PD hours in all places, but have found that in most cases it is sufficient. Please contact me if you have any additional questions.

## GETTING PERSONAL IN NON-PERSONAL SPACES (PART 2): SUPPORTING VULNERABILITY IN REMOTE LEARNING

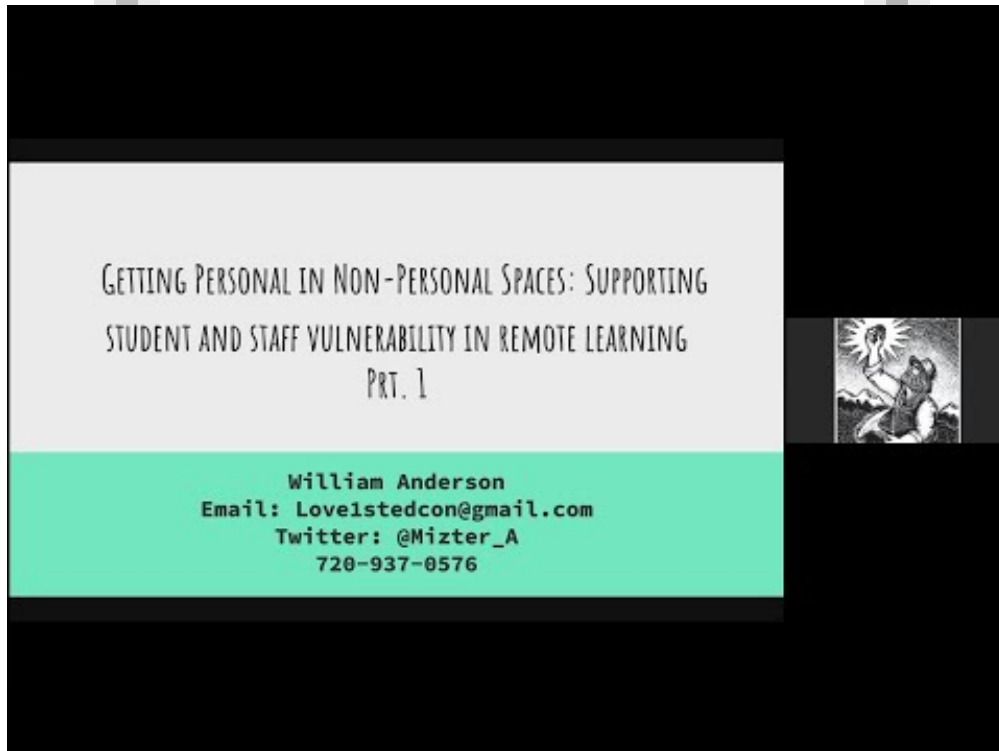


William Anderson discusses how to overcome the social and emotional challenges for both teachers and their students in online learning environments.

In this segment William models practice strategies for allowing your student to open up and become vulnerable in their learning spaces.

View the presentation slide deck here: <https://docs.google.com/presentation/d/1FxzwI6oxy4IS-kzbgQY1va8m06AV4br4BSebOz-Aw8A/edit>

## GETTING PERSONAL IN NON-PERSONAL SPACES (PART 1): SUPPORTING VULNERABILITY IN REMOTE LEARNING



William Anderson discusses how to overcome the social and emotional challenges for both teachers and their students in online learning environments.

In this segment William discussed the importance of vulnerability in the classroom and shares some strategies on how create a safe environment to be vulnerable in your teaching spaces.

View the presentation slide deck here: <https://docs.google.com/presentation/d/1FxzwI6oxy4IS-kzbgQY1va8m06AV4br4BSebOz-Aw8A/edit?usp=sharing>

Image not found

[https://sites.msudenver.edu/tpswesternregion/wp-content/uploads/sites/476/2021/11/tps\\_logo-1.png](https://sites.msudenver.edu/tpswesternregion/wp-content/uploads/sites/476/2021/11/tps_logo-1.png)

### **Teaching Notes:**

Would teachers from other states be able to get a certificate (digital of course) of attendance applicable to continuing PD hours required by various licenses? Just curious as I got that question in a text.