

Image not found

https://sites.msudenver.edu/tpswesternregion/wp-content/uploads/sites/476/2021/11/tps_logo-1.png

ALBUM KIDCITIZEN: WORKSHOP

Album Description

Collecting materials for creating my own KidCitizen episodes

bestof

SNAKE GAME RULES



Reference Link: <http://www.loc.gov/item/2007675305/>

Summary: Print showing a game board with red, gold, and blue spaces, numbered between 1 and 122; on the board are illustrations that are numbered and correspond to the blue "starred" spaces, which are action spots, the player landing on one follows the instructions given with the corresponding illustration, and moves accordingly. At the beginning of the game is a portrait of George Washington and at the end, a rustic looking homestead identified as the "home of the Washington family."

Created / Published: [between 1840 and 1860]

Subject Headings: - Washington, George,--1732-1799

- Board games--1830-1860

Notes: - Title from item.

- Forms part of: Alfred Bendiner Memorial Collection (Library of Congress).

Repository: Library of Congress Prints and Photographs Division Washington, D.C. 20540 USA

Digital Id: pga 03362 //hdl.loc.gov/loc.pnp/pga.03362

BOISE, IDAHO



Reference Link: <http://www.loc.gov/item/2007663548/>

Summary: Building under construction.

Contributor Names: Geo. R. Lawrence Co., photographer

Trowbridge & Niver Co., copyright claimant

Created / Published: c1909.

Subject Headings: - Construction

- United States--Idaho--Boise

Genre: Gelatin silver prints

Notes: - J134328 U.S. Copyright Office

- Copyright deposit; Trowbridge & Niver Co.; November 8, 1909; DLC/PP-1910:43940.

- Photographer's address: Chicago.

- No. 44.

- No digital image.

Repository: Library of Congress Prints and Photographs Division Washington, D.C. 20540 USA

Digital Id: ppmsca 39026 //hdl.loc.gov/loc.pnp/ppmsca.39026

BOISE, IDAHO



Reference Link: <http://www.loc.gov/item/2007663545/>

Contributor Names: Geo. R. Lawrence Co., photographer

Trowbridge & Niver Co., copyright claimant

Created / Published: c1909.

Subject Headings: - Commercial streets

- United States--Idaho--Boise

Notes: - J134326 U.S. Copyright Office

- Copyright deposit; Trowbridge & Niver Co.; November 8, 1909; DLC/PP-1910:43940.

- Photographer's address: Chicago.

- No. 10.

Repository: Library of Congress Prints and Photographs Division Washington, D.C. 20540 USA

Digital Id: pan 6a20101 //hdl.loc.gov/loc.pnp/pan.6a20101

BOISE, IDAHO



Reference Link: <http://www.loc.gov/item/2007663544/>

Contributor Names: Geo. R. Lawrence Co., photographer
Trowbridge & Niver Co., copyright claimant

Created / Published: c1909.

Subject Headings: - Commercial streets

- Street railroads
- United States--Idaho--Boise

Notes: - J134324 U.S. Copyright Office

- Copyright deposit; Trowbridge & Niver Co.; November 8, 1909; DLC/PP-1910:43940.
- Photographer's address: Chicago.
- No. 7.

Repository: Library of Congress Prints and Photographs Division Washington, D.C. 20540 USA

Digital Id: pan 6a20096 //hdl.loc.gov/loc.pnp/pan.6a20096

cph 3c30866 //hdl.loc.gov/loc.pnp/cph.3c30866

Image not found

https://sites.msudenver.edu/tpswesternregion/wp-content/uploads/sites/476/2021/11/tps_logo-1.png

UNION PACIFIC RAILROAD DEPOT, 1701 EASTOVER TERRACE, BOISE, ADA COUNTY, ID



Reference Link: <http://www.loc.gov/item/id0010/>

Contributor Names: Historic American Buildings Survey, creator
Garrett, Duane, photographer

Created / Published: Documentation compiled after 1933

Subject Headings: - railroad stations

- Idaho -- Ada County -- Boise

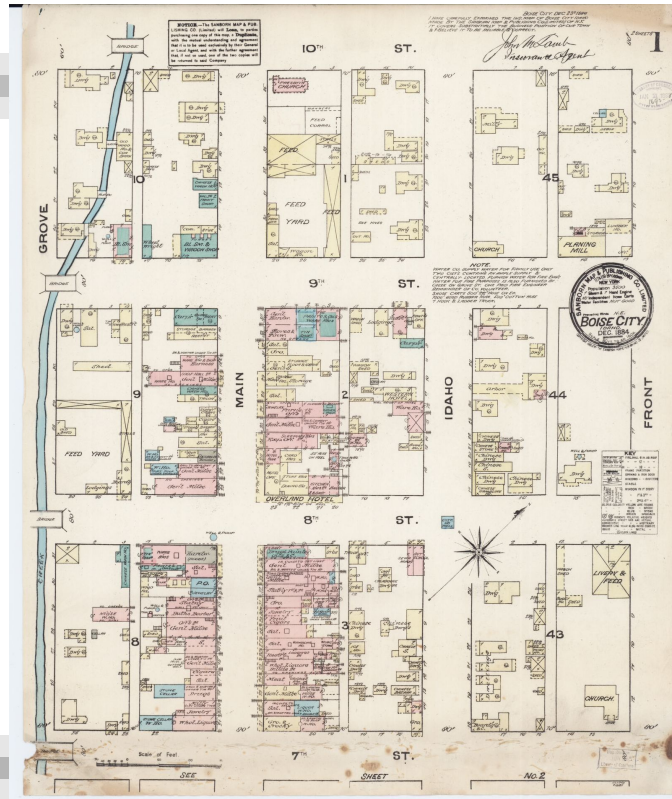
Notes: - Survey number: HABS ID-33

- National Register of Historic Places NRIS Number: 74000730

Repository: Library of Congress Prints and Photographs Division Washington, D.C. 20540 USA

<http://hdl.loc.gov/loc.pnp/pp.print>

SANBORN FIRE INSURANCE MAP FROM BOISE, ADA COUNTY, IDAHO.



Reference Link: http://www.loc.gov/item/sanborn01569_001/

Created / Published: Sanborn Map Company, Dec 1884

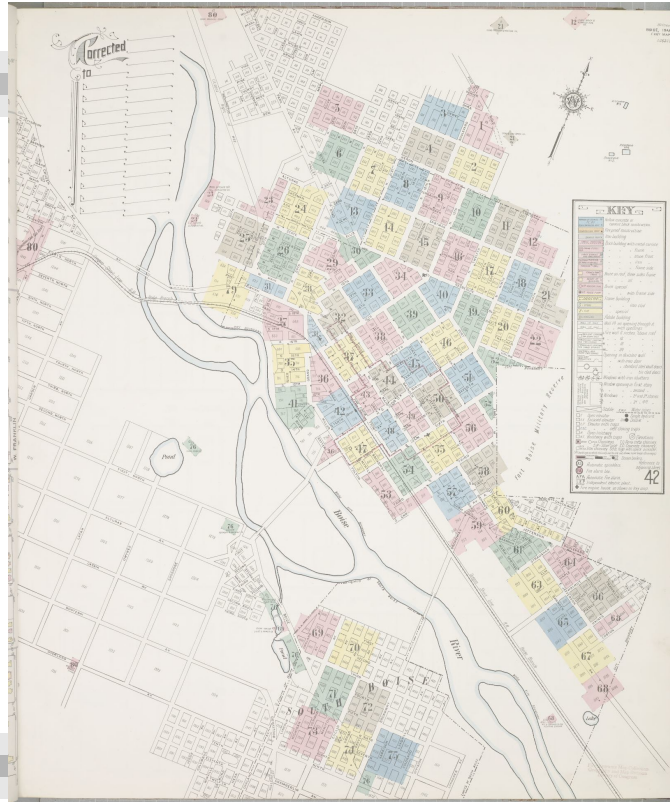
Notes: - Dec 1884.

- 2.

Repository: Library of Congress Geography and Map Division Washington, D.C. 20540-4650 USA

Digital Id: <http://hdl.loc.gov/loc.gmd/g4274bm.g015691884>

SANBORN FIRE INSURANCE MAP FROM BOISE, ADA COUNTY, IDAHO.



Reference Link: http://www.loc.gov/item/sanborn01569_005/

Created / Published: Sanborn Map Company, 1912

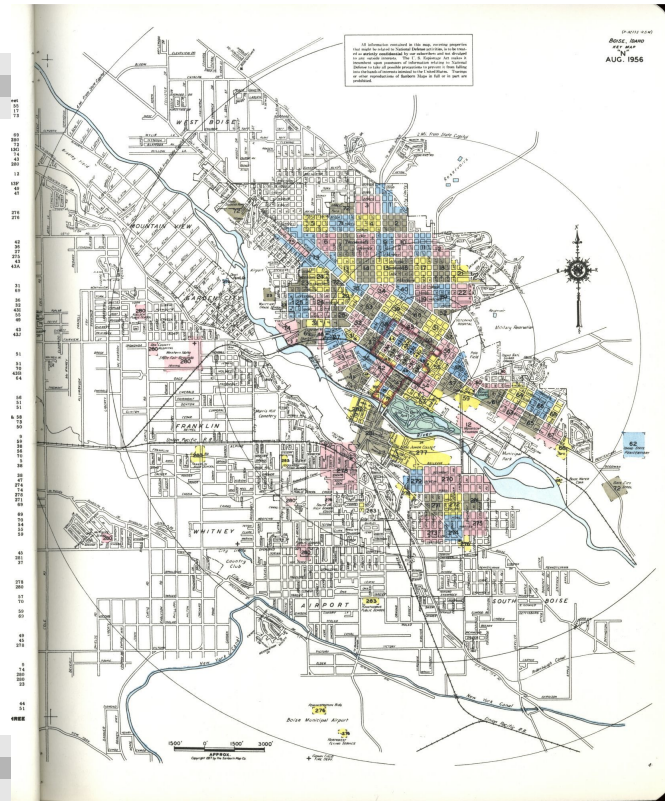
Notes: - 1912.

- 85.

Repository: Library of Congress Geography and Map Division Washington, D.C. 20540-4650 USA

Digital Id: <http://hdl.loc.gov/loc.gmd/g4274bm.g015691912>

SANBORN FIRE INSURANCE MAP FROM BOISE, ADA COUNTY, IDAHO.



Reference Link: http://www.loc.gov/item/sanborn01569_007/

Created / Published: Sanborn Map Company, 1912; Republished 1956

Notes: - 1912; Republished 1956.

- 103.

- 39 X 29 cm. Bound.

Repository: Library of Congress Geography and Map Division Washington, D.C. 20540-4650 USA

Digital Id: <http://hdl.loc.gov/loc.gmd/g4274bm.g015691956>