

ALBUM GEOGRAPHY ALIGNED RAILROAD RESOURCES FOR THE STUDY OF WESTWARD EXPANSION

Album Description

Contextual Paragraph:

The discovery of gold in California in 1848 inspired a massive human migration first in a westward direction and subsequently eastward from there to Nevada and Colorado where later discoveries were made. The travels of the first gold seekers were difficult and time consuming as the choices for easterners to travel to the gold fields were overland by wagon trains or by sea; the Atlantic Ocean to the Isthmus of Panama, overland to the Pacific Ocean sailing northward to California.

Travelers who crossed the Great Plains and traversed the Rocky Mountains began to realize that perhaps there was value in something other than gold and later silver. As the population in the western territories grew, both sections realized that a better transportation system, e.g. railroads, would greatly benefit the economies of both sections.

Passage of the Homestead Act (1862) and the Transcontinental Railroad Acts of 1862 and 1864 set the stage for the development of the western United States in the latter half of the 19th century.

Geographic Thinking Skill(s):

- Analyze how historical events and the spatial diffusion of ideas, technologies, and cultural practices have influenced migration patterns and the distribution of the human population.
- Evaluate how political and economic decisions influence cultural and environmental characteristics of various places and regions.

Essential Question:

- How did railroads affect the development of the western United States in the last half of the 19th Century?

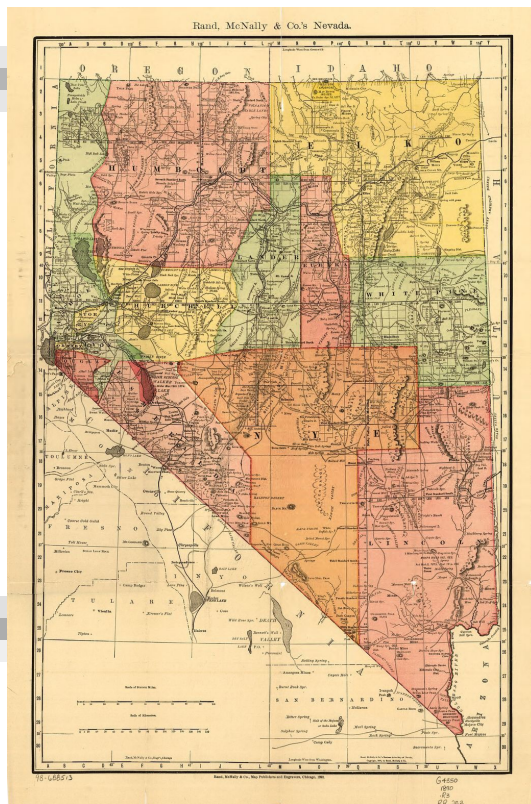
Grade Level:

- Middle/High School

Created in Collaboration with the TPS Western Region and Geo Alliance Partners in AZ, CO, NV, and OR.

Special Thanks to  Cynthia Stout

**INDEXED COUNTY AND TOWNSHIP POCKET MAP AND SHIPPERS GUIDE OF NEVADA,
ACCOMPANIED BY A NEW AND ORIGIANL COMPILATION AND READY REFERENCE
INDEX, SHOWING IN DETAIL THE ENTIRE RAILROAD NETWORK.**



Reference Link: <https://www.loc.gov/item/98688513/>

Summary: Shows relief by hachures, drainage, counties, township lines, Indian reservations, roads, and railroads with names. Title from cover.

Contributor Names: Rand McNally and Company.

Created / Published: Chicago, 1893.

Subject Headings: - Nevada--Maps

- United States--Nevada

Notes: - Scale ca. 1:750,000.

- LC Railroad maps, 253

- Description derived from published bibliography.

- Available also through the Library of Congress Web site as a raster image.

Repository: Library of Congress Geography and Map Division Washington, D.C. 20540-4650 USA dcu

Digital Id: <http://hdl.loc.gov/loc/gmd/g4350.rr002530>

INTERPRETING PRIMARY SOURCES WITH A GEOGRAPHIC LENS

Teaching Notes:

Tools and resources for interpreting primary sources with a geographic lens.

Site by the Arizona Geographic Alliance Includes:

- Adapted Library of Congress Analysis tool which include geographic prompts for all media types
- Student Worksheets
- Additional Primary Source Sets for exploring geography

Image not found

https://sites.msudenver.edu/tpswesternregion/wp-content/uploads/sites/476/2021/11/tps_logo-1.png

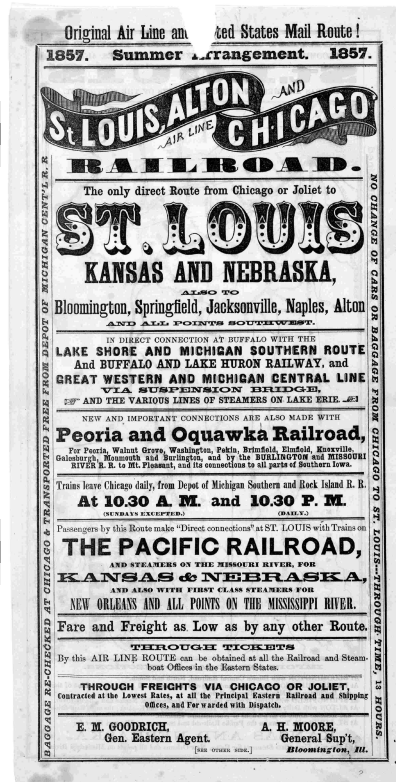
EXCERPTS FROM SETTLER LETTERS FROM THE BOOK: THE WORLD RUSHED IN

Teaching Notes:

Excerpted letters from settlers of the West.

Selected to provide first hand accounts of those involved in westward expansion.

IMAGE 1 OF ORIGINAL AIR LINE AND UNITED STATES MAIL ROUTE! 1857. SUMMER ARRANGEMENT. 1857. ST. LOUIS, ALTON AND CHICAGO AIR LINE RAILROAD ... 1857. [CHICAGO? ILL.].



Reference Link: <http://www.loc.gov/resource/rbpe.01703600/>

Contributor Names: St. Louis, Alton and Chicago air line railroad.
Created / Published: Chicago, 1857.

Subject Headings: - United States--Illinois--Chicago

Genre: Advertisements--Illinois--Chicago

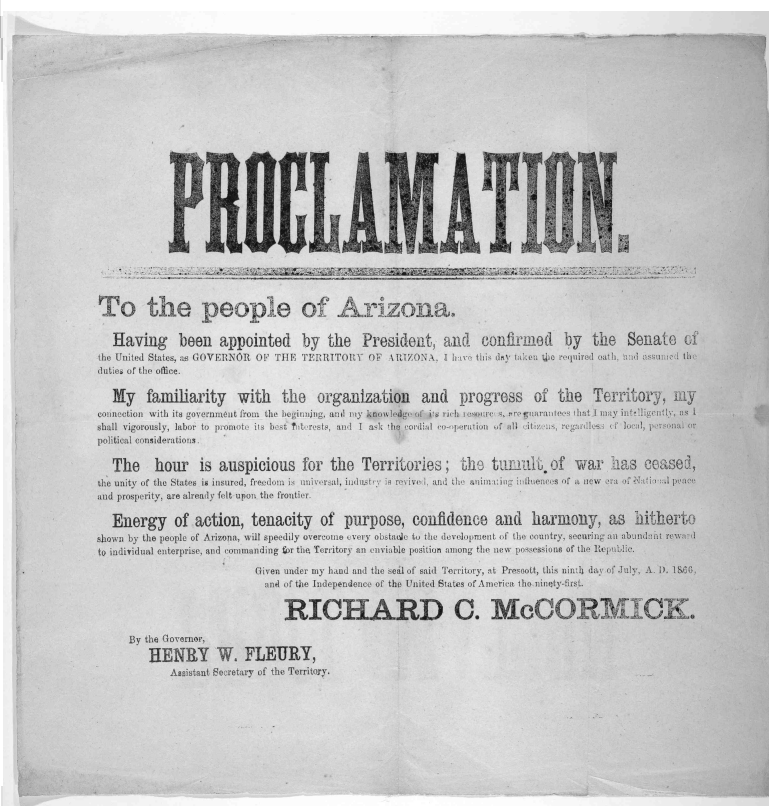
Notes: - Map of Illinois, Iowa, Nebraska, Kansas and Missouri on verso.; Transportation.; Map.

- Available also through the Library of Congress web site in two forms: as facsimile page images and as full text in SGML.

- Printed Ephemera Collection; Portfolio 17, Folder 36.

Digital Id: <http://hdl.loc.gov/loc.rbc/rbpe.01703600>

PROCLAMATION TO THE PEOPLE OF ARIZONA. JULY 9, 1866.



Reference Link: <http://www.loc.gov/resource/rbpe.00103000/>

Contributor Names: Arizona. Territory. Governor. Richard C. McCormick.

Created / Published: Prescott, 1866.

Subject Headings: - United States--Arizona--Prescott

Genre: Proclamations--Arizona--Prescott

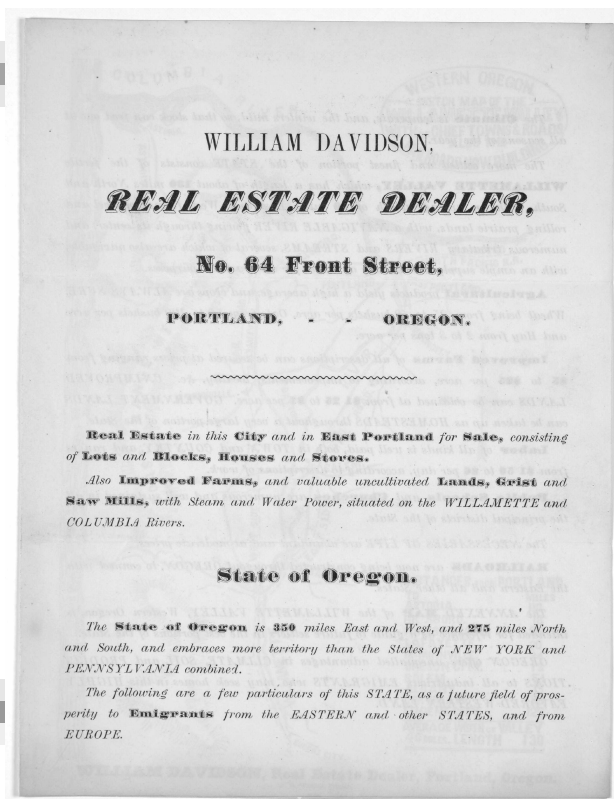
Notes: - Proclamation.

- Available also through the Library of Congress web site in two forms: as facsimile page images and as full text in SGML.

- Printed Ephemera Collection; Portfolio 1, Folder 30.

Digital Id: <http://hdl.loc.gov/loc.rbc/rbpe.00103000>

IMAGE 1 OF [THREE BROADSIDES, ADVERTISEMENTS OF WILLIAM DAVIDSON, REAL ESTATE DEALER OF PORTLAND OREGON 18-].



Reference Link: <http://www.loc.gov/resource/rbpe.13901500/>

Contributor Names: Davidson, William.

Created / Published: Portland, 1800.

Subject Headings: - United States--Oregon--Portland

Genre: Leaflets--Oregon--Portland

Notes: - Page Order: Pieces 1 and 2 are Leaflets.

- Available also through the Library of Congress web site in two forms: as facsimile page images and as full text in SGML.

- Printed Ephemera Collection; Portfolio 139, Folder 15.

Digital Id: <http://hdl.loc.gov/loc.rbc/rbpe.13901500>

1st ed. 1899. W & D. 1. A.

I will go West!

Words by the author. All Rights reserved. of Eastern Song? & Western Song? Inc., Inc.

Music by E. F. HARRIS.

The image shows the musical score for the song 'I will go West!'. It consists of two systems of music. The first system is for the vocal part, written in G major and 2/4 time. The melody is simple and catchy, with a key signature of one sharp (F#). The second system is for the piano accompaniment, also in G major and 2/4 time. The piano part features a simple, rhythmic accompaniment with chords and single notes. The score is written on a single page with a decorative border.

1 My horse and wagon, leaving home,
Are ready for the road.
I will go West, to the far West,
For my horse is ready.

2 The day when I started out,
The day when I started out,
When the sun was in the west,
The day when I started out.

3 Goodbye to my home, I'm going west,
To the land of the free,
My horse and wagon, ready for the road,
And I'm on my way.

4 Now I'm on my way, I'm going west,
To the land of the free,
My horse and wagon, ready for the road,
And I'm on my way.

5 Goodbye to my home, I'm going west,
To the land of the free,
My horse and wagon, ready for the road,
And I'm on my way.

6 Now I'm on my way, I'm going west,
To the land of the free,
My horse and wagon, ready for the road,
And I'm on my way.

7 My horse and wagon, leaving home,
Are ready for the road.
I will go West, to the far West,
For my horse is ready.

8 The day when I started out,
The day when I started out,
When the sun was in the west,
The day when I started out.

9 Goodbye to my home, I'm going west,
To the land of the free,
My horse and wagon, ready for the road,
And I'm on my way.

10 Now I'm on my way, I'm going west,
To the land of the free,
My horse and wagon, ready for the road,
And I'm on my way.

Copyright 1899

Copyright 1899

Published by W. & D. 1. A.

100 N. 4th St. N. W. Washington, D. C.

The illustration shows a stagecoach, a vehicle used for transporting passengers. It is a large, open-sided vehicle with a roof supported by pillars. The stagecoach is shown from a side profile, facing right. It has large wheels and a long seat for passengers. The illustration is in a simple, line-art style.

Copyright 1899 by W. & D. 1. A.

"I will go West!" is a song by E. F. Harris, with lyrics by the author. It is a popular song that has been recorded by many artists.

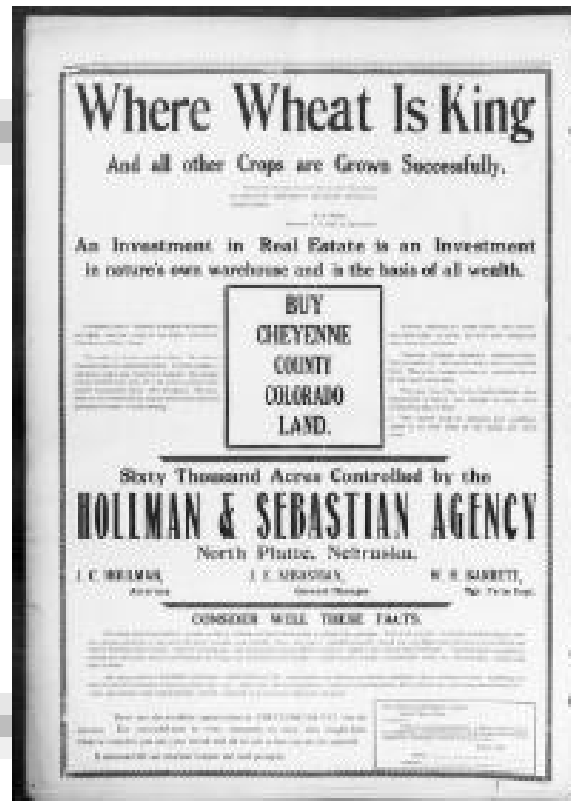
Contributor Names: Barrett, J. P.

Subject Headings: - Choruses, Secular (Mixed voices, 4 parts), Unaccompanied

Notes: - From: Music Copyright Deposits, 1870-1885 (Microfilm M 3500)

Repository: Library of Congress. Music Division.

THE NORTH PLATTE SEMI-WEEKLY TRIBUNE., APRIL 20, 1920, IMAGE 4



Teaching Notes:

Where Wheat is King

Reference Link: <https://chroniclingamerica.loc.gov/lccn/2010270504/1920-04-20/ed-1/seq-4>

Newspaper: The North Platte semi-weekly tribune. (North Platte, Neb.) 1895-1922

Newspaper Link: <https://chroniclingamerica.loc.gov/lccn/2010270504/1920-04-20/ed-1/seq-4>

Image provided by: University of Nebraska-Lincoln Libraries, Lincoln, NE

PDF Link: <https://chroniclingamerica.loc.gov/lccn/2010270504/1920-04-20/ed-1/seq-4.pdf>

IMPERIAL VALLEY PRESS., JANUARY 08, 1910, PAGE 2, IMAGE 2



Teaching Notes:

Townsite Opening

Reference Link: https://chroniclingamerica.loc.gov/lccn/sn92070146/1910-01-08/ed-1/seq-2/print/image_681x632_from_2146%2C0_to_5202%2C2837

Newspaper: Imperial Valley press. (El Centro, Calif.) 1907-current

Newspaper Link: https://chroniclingamerica.loc.gov/lccn/sn92070146/1910-01-08/ed-1/seq-2/print/image_681x632_from_21...

Image provided by: University of California, Riverside; Riverside, CA

PDF Link: <https://chroniclingamerica.loc.gov/lccn/sn92070146/1910-01-08/ed-1/seq-2.pdf>

OMAHA DAILY BEE., OCTOBER 23, 1910, WANT ADS, PAGE 8, IMAGE 46



Teaching Notes:

You'll find your opportunity in the new West

Reference Link: <https://chroniclingamerica.loc.gov/lccn/sn99021999/1910-10-23/ed-1/seq-46>

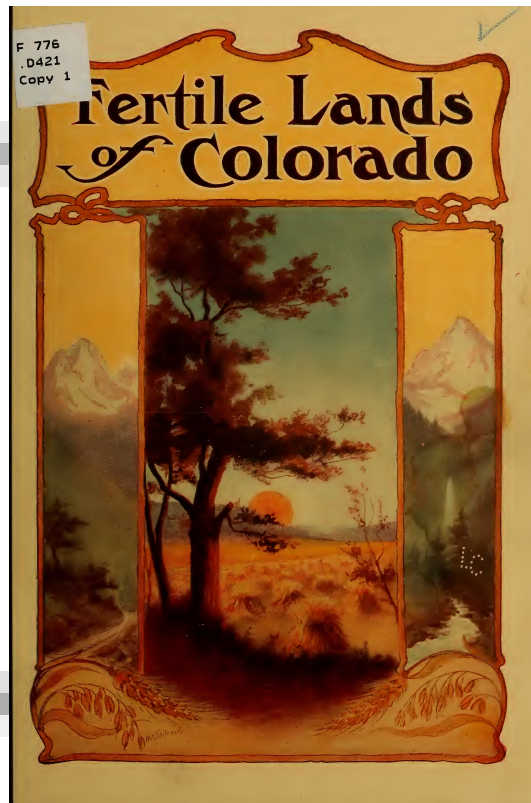
Newspaper: Omaha daily bee. (Omaha [Neb.]) 187?-1922

Newspaper Link: <https://chroniclingamerica.loc.gov/lccn/sn99021999/1910-10-23/ed-1/seq-46>

Image provided by: University of Nebraska-Lincoln Libraries, Lincoln, NE

PDF Link: <https://chroniclingamerica.loc.gov/lccn/sn99021999/1910-10-23/ed-1/seq-46.pdf>

THE FERTILE LANDS OF COLORADO AND NORTHERN NEW MEXICO



Teaching Notes:

Corporate name

Denver and Rio Grande Railroad Company.

Main title

The fertile lands of Colorado and northern New Mexico ... written by Charles A. Lyman.

Edition

12th ed., 235,000 copies.

Published/Created

[Denver?] Passenger Dept., the Denver & Rio Grande Railroad, c1912.

Reference Link: <https://archive.org/details/fertilelandsofc00denv>

HOW THE PUBLIC DOMAIN HAS BEEN SQUANDERED, MAP SHOWING THE 139,403,026 ACRES OF THE PEOPLE'S LAND - EQUAL TO 871,268 FARMS OF 160 ACRES EACH, WORTH AT \$2 AN ACRE, \$278,806,052, GIVEN BY REPUBLICAN CONGRESSES TO RAILROAD CORPORATIONS



Reference Link: <https://www.loc.gov/item/2006627679/>

Contributor Names: Rand McNally and Company.

Created / Published: Chicago : Rand McNally and Company, 1884.

Subject Headings: - Transportation--United States--Maps

- United States

Notes: - On sheet below map "We believe that the public lands ought, as far as possible, to be kept as homesteads for actual settlers; that all unearned lands heretofore improvidently granted to railroad corporations by the action of the Republican party should be restored to the public domain; and that no more grants of land shall be made to corporations, or be allowed to fall into the ownership of alien absentees. Democratic platform, 1884."

- Exhibition: Maps for an Emerging Nation: Commercial Cartography in Nineteenth-century America, Aug. 8-Oct. 20, 1977 .

- Available also through the Library of Congress Web site as a raster image.

Repository: Library of Congress Geography and Map Division Washington, D.C. 20540-4650 USA dcu

Digital Id: <http://hdl.loc.gov/loc.gmd/g3701p.ct001467>

MAP OF LAND-GRANT AND BOND-AIDED RAILROADS OF THE UNITED STATES.



Reference Link: <https://www.loc.gov/item/98688343/>

Summary: Outline map of the United States showing major drainage, cities and towns, and military posts.

Contributor Names: United States. Army. Quartermaster Corps.

Created / Published: Washington, 1892.

Subject Headings: - Railroads--United States--Maps

- Railroad land grants--United States--Maps

- Military bases--United States--Maps

- United States

Notes: - Scale ca. 1:5,000,000.

- "Bond-aided roads shown by heavy black lines. Fifty per cent land grant roads shown by red lines. Free land grant roads shown by green lines. Connections shown by light black lines."

- LC Railroad maps, 65

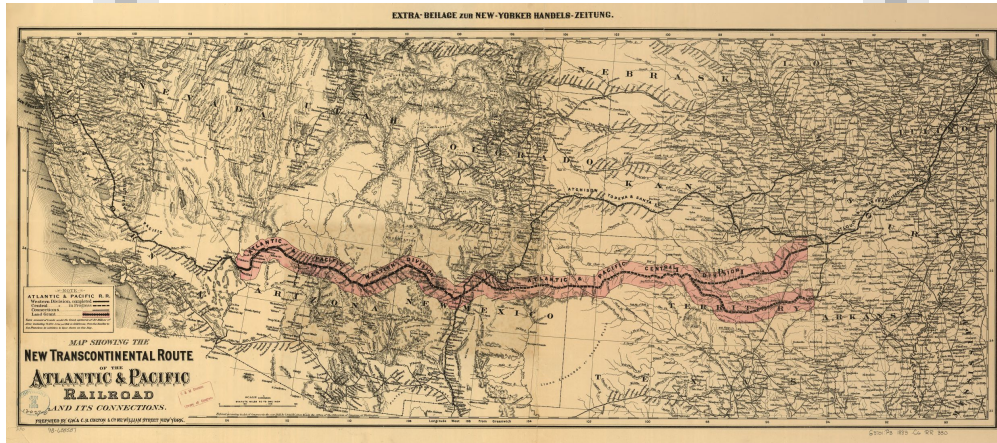
- Description derived from published bibliography.

- Available also through the Library of Congress Web site as a raster image.

Repository: Library of Congress Geography and Map Division Washington, D.C. 20540-4650 USA dcu

Digital Id: <http://hdl.loc.gov/loc.gmd/g3701p.rr000650>

MAP SHOWING THE NEW TRANSCONTINENTAL ROUTE OF THE ATLANTIC & PACIFIC RAILROAD AND ITS CONNECTIONS.



Reference Link: <https://www.loc.gov/item/98688587/>

Summary: Map covering the southwestern states but extending from Chicago to the Pacific Coast.

Contributor Names: G.W. & C.B. Colton & Co.

Atlantic and Pacific Railroad Company.

Chicago & Pacific Railroad.

Created / Published: New York, 1883.

Subject Headings: - Atlantic and Pacific Railroad Company--Maps

- Chicago & Pacific Railroad--Maps

- Railroads--United States--Maps

- Railroad land grants--United States--Maps

- United States

Notes: - 12027 U.S. Copyright Office

- Scale ca. 1:3,800,000.

- LC Railroad maps, 330

- Description derived from published bibliography.

- Shows relief by hachures, drainage, cities and towns, township lines, the land grant of the "western division," railroads in progress of completion, and completed lines with their connections.

- At top of map: Extra-Beilage zue New-Yorker Handels-Zeitung.

- Available also through the Library of Congress Web site as a raster image.

Repository: Library of Congress Geography and Map Division Washington, D.C. 20540-4650 USA dcu

Digital Id: <http://hdl.loc.gov/loc/gmd/g3701p.rr003300>

LLOYD'S AMERICAN RAILROAD MAP OF THE UNITED STATES, SHOWING THE THREE PROPOSED ROADS AND THE OVERLAND MAIL ROUTE TO THE PACIFIC,



Reference Link: <https://www.loc.gov/item/gm70005361/>

Summary: Outline map of the continental United States showing drainage, state boundaries, major cities, forts, finished and proposed railroads. [From published bibliography]

Contributor Names: Lloyd, James T.

Smith, Rae.

Created / Published: [New York], 1859.

Subject Headings: - Railroads--United States--Maps

- United States

Notes: - Scale ca. 1:6,500,000.

- Relief shown by hachures.

- Portraits of 28 railroad presidents are reproduced in the border, including: John Robin McDaniel, Jacob Strader, J. D. De Frees, John Caldwell, C. A. Brown, J. Edgar Thompson, Thos. D. Walker, E. Hobbs, R. N. Rice, S. S. L'Hommedieu, Wm. Case, George Palmer, P. A. Hall, Henry C. Lord, A. G. Jaudon, Edwin Robinson, E. H. Gill, W. T. Joynes, J. B. Warring, S. L. Fremont, John L. Helm, John Ross, A. S. Crothers, E. Gest, Erastus Corning, L. M. Hubby, W. H. Clements, John T. Levis,

- "Entered according to act of Congress in the year 1859 by J.T. Lloyd in the clerk's office of the District Court of the United States ..."

- "Drawn & engraved at Rae Smith's ... N.Y. from materials furnished to the 36th Congress, March 1859 by G.K. Warren, Lt. U.S. Top. Eng. for the passage of the Pacific Railroad bill."

- LC U.S. railroad maps, 37

- Includes portraits of 28 railroad presidents.

- Available also through the Library of Congress Web site as a raster image.

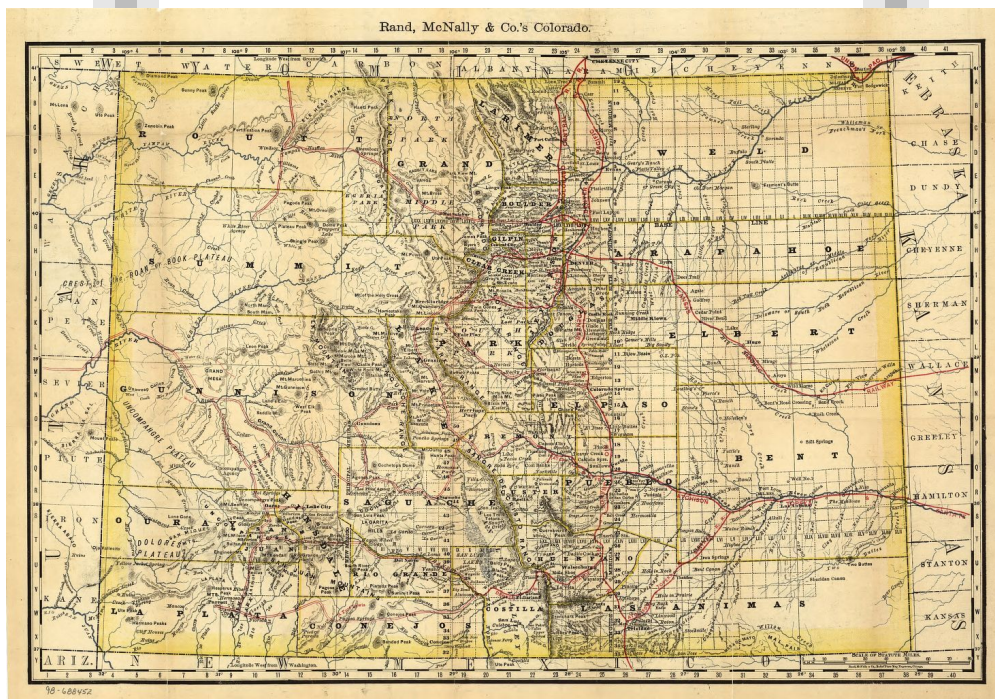
- AACR2

Image not found

https://sites.msudenver.edu/tpswesternregion/wp-content/uploads/sites/476/2021/11/tps_logo-1.png

Repository: Library of Congress Geography and Map Division Washington, D.C. 20540-4650 USA dcu
Digital Id: <http://hdl.loc.gov/loc.gmd/g3701p.rr000370>

INDEXED MAP OF COLORADO SHOWING THE RAILROADS IN THE STATE, AND THE EXPRESS COMPANY DOING BUSINESS OVER EACH, ALSO COUNTIES AND RIVERS.



Reference Link: <https://www.loc.gov/item/98688452/>

Summary: Shows relief by hachures, drainage, counties, cities and towns, roads, and the railroads with names along the lines. Title from cover.

Contributor Names: Rand McNally and Company.

Created / Published: Chicago, 1879.

Subject Headings: - Colorado--Maps

- United States--Colorado

Notes: - Scale ca.1:1,500,000.

- LC Railroad maps, 190

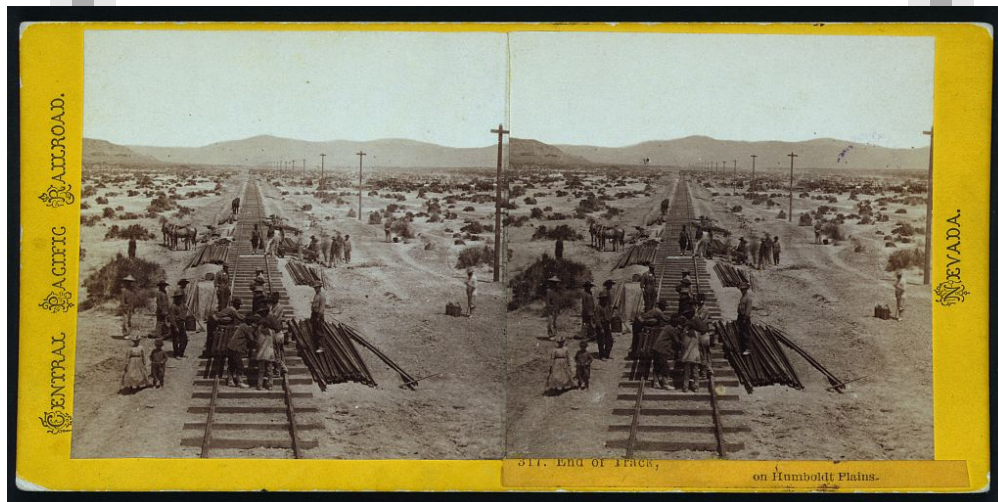
- Description derived from published bibliography.

- Available also through the Library of Congress Web site as a raster image.

Repository: Library of Congress Geography and Map Division Washington, D.C. 20540-4650 USA dcu

Digital Id: <http://hdl.loc.gov/loc.gmd/g4310.rr001900>

END OF TRACK, ON HUMBOLDT PLAINS



Reference Link: <https://www.loc.gov/pictures/item/2005683011/>

Creator(s): Hart, Alfred A., 1816-1908, photographer

Date Created/Published: Sacramento, Calif. : Golden State Photographic Gallery, [between 1865 and 1869]

Summary: Photo shows railroad track construction, including Chinese railroad workers.

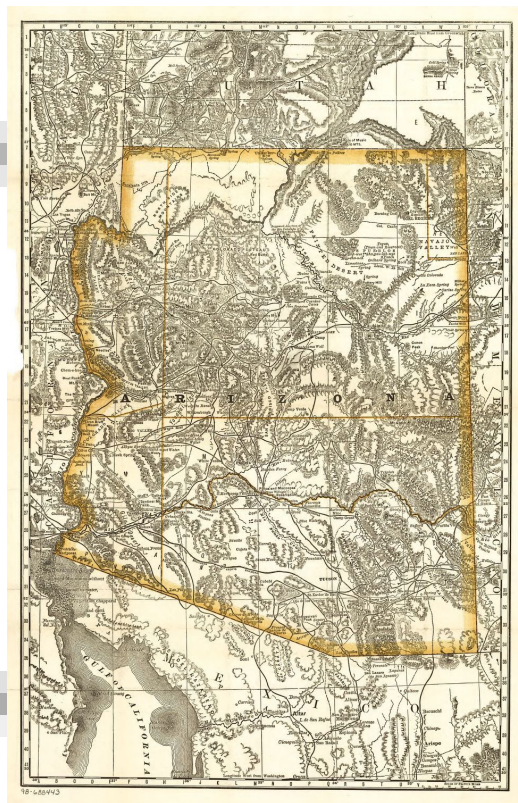
Call Number: LOT 11477, no. 171 [item] [P&P]

Repository: Library of Congress Prints and Photographs Division Washington, D.C. 20540 USA

Notes: No. 317. Title from item. Part of series: Central Pacific Railroad, Nevada. Scenes on the Humboldt River.

Subjects: Railroad construction--Nevada--1860-1870.

INDEXED MAP OF ARIZONA SHOWING THE STAGE LINES, COUNTIES, LAKES & RIVERS.



Reference Link: <https://www.loc.gov/item/98688443/>

Summary: Shows relief by hachures, cities and towns, roads and trails, proposed mail route, and proposed railroad lines.

Contributor Names: Rand McNally and Company.

Created / Published: Chicago, 1876.

Subject Headings: - Arizona--Maps

- United States--Arizona

Notes: - Scale ca. 1:2,000,000.

- Title from cover.

- LC Railroad maps, 181

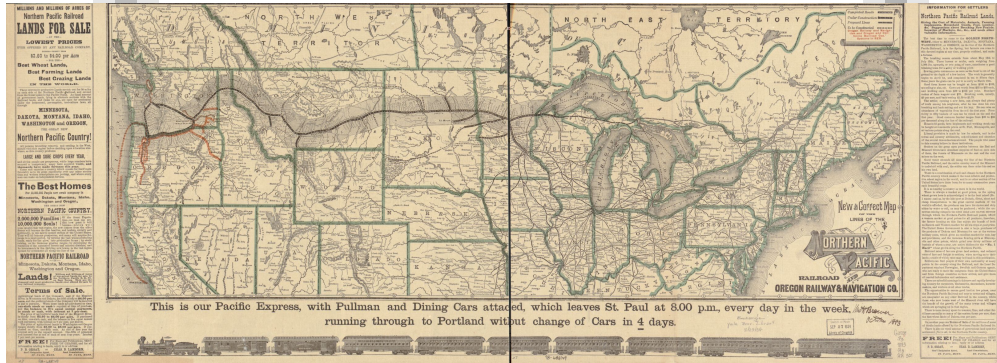
- Description derived from published bibliography.

- Available also through the Library of Congress Web site as a raster image.

Repository: Library of Congress Geography and Map Division Washington, D.C. 20540-4650 USA dcu

Digital Id: <http://hdl.loc.gov/loc/gmd/g4330.rr001810>

NEW AND CORRECT MAP OF THE LINES OF THE NORTHERN PACIFIC RAILROAD AND OREGON RAILWAY & NAVIGATION CO.



Reference Link: <https://www.loc.gov/item/98688749/>

Summary: Map of northern United States and part of Canada showing relief by hachures, drainage, cities and towns, and railroads. Shaded area shows land grant. Main lines indicated by heavy black and red.

Contributor Names: Rand McNally and Company.

Northern Pacific Railroad Company.

Created / Published: Chicago, 1883.

Subject Headings: - Northern Pacific Railroad Company--Maps

- Railroads--United States--Maps

- United States

Notes: - Scale ca. 1:6,000,000.

- Signed in ms: "Wm H Brewer October 1883."

- An uncolored facsimile edition of this map was published by Rand McNally and Company in celebration of their centennial in 1956.

- Information missing from center of map due to trimming.

- LC Railroad maps, 501

- Description derived from published bibliography.

- Available also through the Library of Congress Web site as a raster image.

Repository: Library of Congress Geography and Map Division Washington, D.C. 20540-4650 USA dcu

Digital Id: <http://hdl.loc.gov/loc/gmd/g3701p.rr005010>

Image not found

https://sites.msudenver.edu/tpswesternregion/wp-content/uploads/sites/476/2021/11/tps_logo-1.png

PALMER_LAKE_RAILROAD_STATION.JPG



Reference Link: <http://digital.denverlibrary.org/cdm/ref/collection/p15330coll22/id/31999>

Image not found

https://sites.msudenver.edu/tpswesternregion/wp-content/uploads/sites/476/2021/11/tps_logo-1.png

CHERRELYN_HORSECAR.JPG



Reference Link: <http://digital.denverlibrary.org/cdm/ref/collection/p15330coll22/id/9286>

Image not found

https://sites.msudenver.edu/tpswesternregion/wp-content/uploads/sites/476/2021/11/tps_logo-1.png

OLD_UNION_STATION_DENVER_COLO.JPG



Reference Link: <http://digital.denverlibrary.org/cdm/ref/collection/p15330coll22/id/30867>

Image not found

https://sites.msudenver.edu/tpswesternregion/wp-content/uploads/sites/476/2021/11/tps_logo-1.png

HIGH_BRIDGE_OVER_THE_LOOP_ABOVE_GEORGETOWN_COLO_C_S_RY.JPG



Reference Link: <http://digital.denverlibrary.org/cdm/ref/collection/p15330coll22/id/1505>

DALLES



Reference Link: <https://www.loc.gov/pictures/item/95513912/>

Creator(s): Sarony, Major & Knapp Lith.,

Date Created/Published: [ca. 1855]

Summary: Print shows three Natives at a camp on the shore of The Dalles, on the Columbia River, Oregon.

Call Number: LOT 3986-9 [item] [P&P]

Repository: Library of Congress Prints and Photographs Division Washington, D.C. 20540 USA

<http://hdl.loc.gov/loc.pnp/pp.print>

Notes: Title from item. U.S.P.R.R. Exp. & Surveys 47th & 49th Parallels. General Report Plate XLIII. Illus. from: U.S. Pacific railroad explorations and surveys, 47th & 49th Parallels. General Report / U.S. Army, Corps of Topographical Engineers. House executive document 129, 33rd Congress, 1st session, plate XLIII. Exhibited: "Capitol Visitor Center" at the U.S. Capitol, Washington, D.C., 2012.

Subjects: Indians of North America--Oregon--Dalles--1850-1860. Indian encampments--Oregon--Dalles--1850-1860.

DUMPING ROCK ON JETTY



Reference Link: <https://www.loc.gov/pictures/item/00650204/>

Date Created/Published: [between 1890 and 1892(?)]

Summary: Train on jetty, Coos Bay, Oregon.

Call Number: LOT 5219 [item] [P&P]

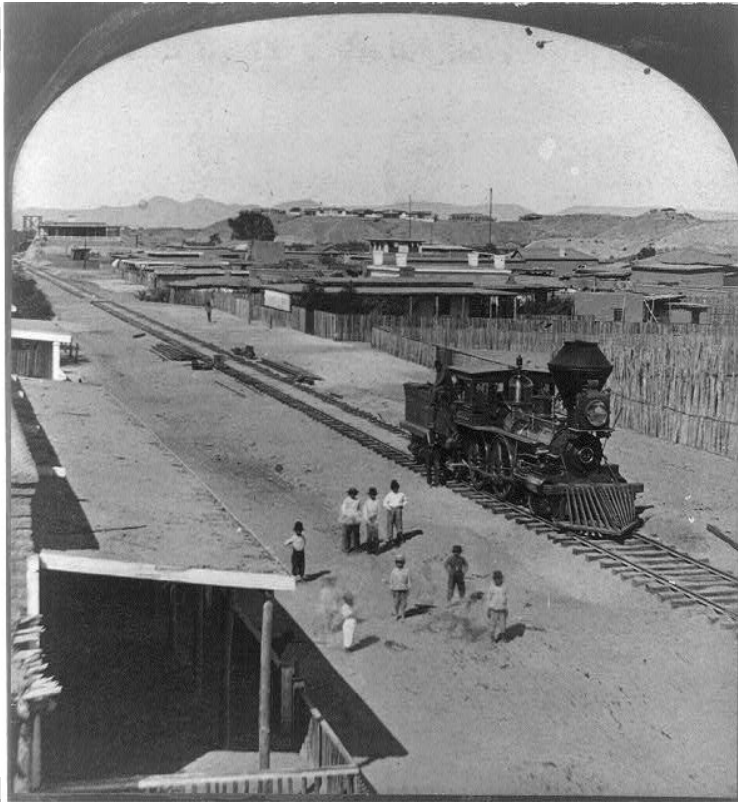
Repository: Library of Congress Prints and Photographs Division Washington, D.C. 20540 USA

Notes: No. 10. On recto: No. 155. Engineering Department 1892.

Subjects: Jetties--Oregon--Coos Bay (Bay)--1890-1900. Railroads--Oregon--Coos Bay (Bay)--1890-1900.

Rocks--Oregon--Coos Bay (Bay)--1890-1900.

ARRIVAL OF THE FIRST LOCOMOTIVE IN ARIZONA



Reference Link: <https://www.loc.gov/pictures/item/2013645437/>

Date Created/Published: [United States] : Continent Stereoscopic Company, publishers, [1877]

Summary: Stereograph showing men posing on and near a locomotive, probably in Yuma, Arizona.

Call Number: LOT 13568, no. 11 [item] [P&P]

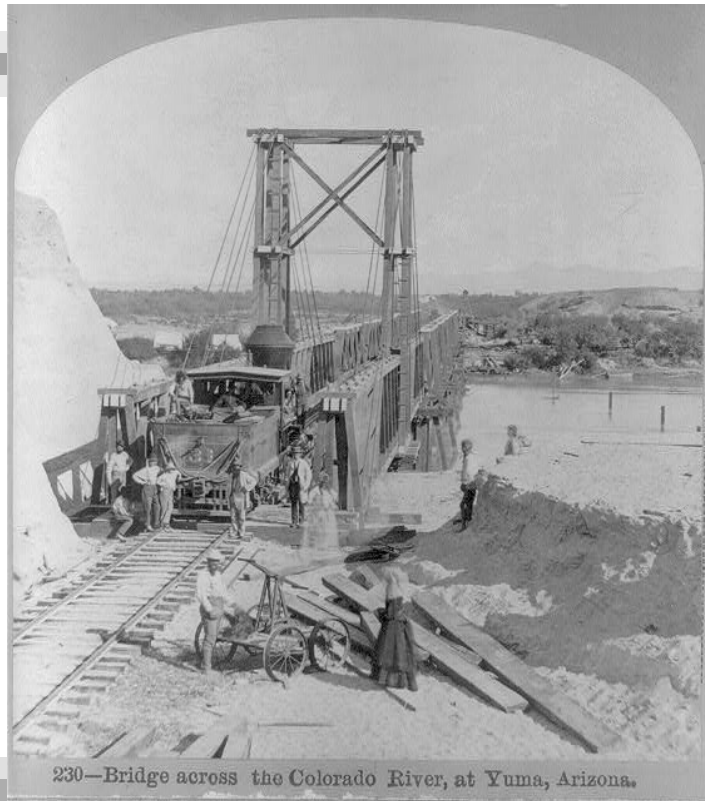
Repository: Library of Congress Prints and Photographs Division Washington, D.C. 20540 USA

<http://hdl.loc.gov/loc.pnp/pp.print>

Notes: Written in pen on back of mount: Fort Yuma, Cal. on bluff in background. "Descriptive views of the American Continent" printed on mount. No. 254. Title from item.

Subjects: Railroad locomotives--Arizona--Yuma--1870-1880. Firsts--Arizona--Yuma--1870-1880.

BRIDGE ACROSS THE COLORADO RIVER, AT YUMA, ARIZ.



230—Bridge across the Colorado River, at Yuma, Arizona.

Reference Link: <https://www.loc.gov/pictures/item/2006687322/>

Date Created/Published: 1877.

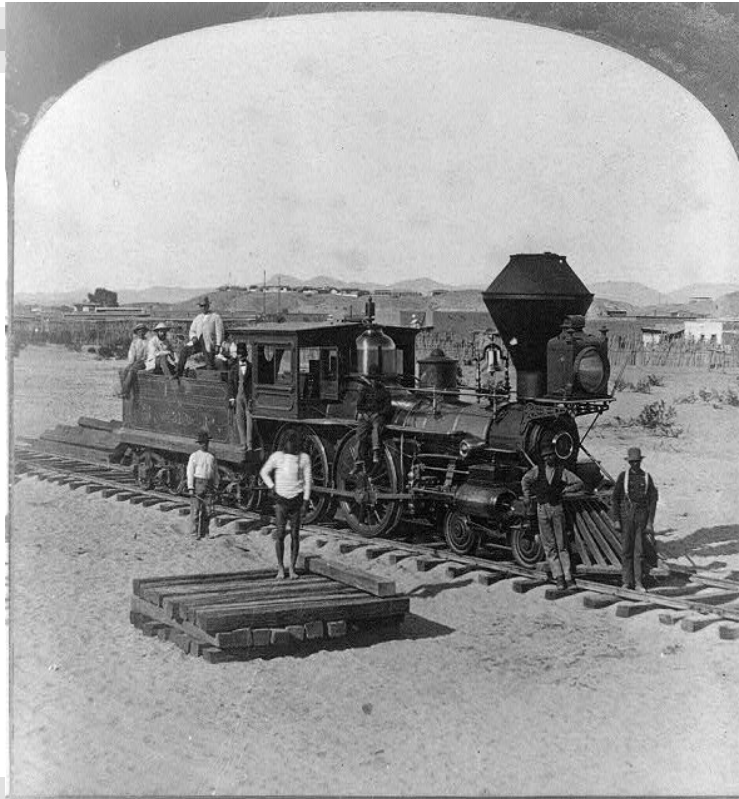
Summary: Constructing railroad bridge, Arizona.

Call Number: LOT 13568, no. 7 [item] [P&P]

Repository: Library of Congress Prints and Photographs Division Washington, D.C. 20540 USA

Notes: Photo by E. Conklin; Continent Stereoscopic Co., Publishers. This record contains unverified, old data from caption card. Caption card tracings: Shelf.

OLD "31" THE PIONEER ENGINE OF ARIZONA



Reference Link: <https://www.loc.gov/pictures/item/2013645436/>

Date Created/Published: [United States] : Continent Stereoscopic Company, publishers, [1877]

Summary: Stereograph showing men posing on and near a locomotive, probably in Yuma, Arizona.

Call Number: LOT 13568, no. 9 [item] [P&P]

Repository: Library of Congress Prints and Photographs Division Washington, D.C. 20540 USA

<http://hdl.loc.gov/loc.pnp/pp.print>

Notes: Written in pen on back of mount: Yuma, Ariz., Fort Yuma, Cal. on bluff in background. "Descriptive views of the American Continent" printed on mount. No. 237. Title from item.

Subjects: Railroad locomotives--Arizona--Yuma--1870-1880.

SANTA FE EATING HOUSE, KINGMAN, ARIZONA



Reference Link: <https://www.loc.gov/pictures/item/2012649494/>

Creator(s): Watkins, H. H., photographer

Date Created/Published: [between ca. 1890 and ca. 1910]

Summary: Photograph shows people waiting on platform as train, with black smoke spewing from smoke stack, arrives at railroad station.

Call Number: SSF - Railroads -- Stations -- Arizona -- Kingman [item] [P&P]

Repository: Library of Congress Prints and Photographs Division Washington, D.C. 20540 USA

<http://hdl.loc.gov/loc.pnp/pp.print>

Notes: H. H. Watkins, Kingman, Ariz. Title from item.

Subjects: Railroad stations--Arizona--Kingman--1890-1910.

1. HISTORIC AMERICAN BUILDINGS SURVEY PHOTOCOPY CREDIT: NEVADA STATE MUSEUM SOUTH SIDE AND EAST FACADE, JUNE 16, 1882 - VIRGINIA & TRUCKEE RAILROAD SHOPS, BETWEEN PLAZA, ANN, STEWART & SOPHIA STREETS, CARSON CITY, CARSON CITY, NV



Reference Link: <https://www.loc.gov/pictures/item/nv0032.photos.104069p/>

Call Number: HABS NEV,13-CARCI,6--1

Repository: Library of Congress Prints and Photographs Division Washington, D.C. 20540 USA

<http://hdl.loc.gov/loc.pnp/pp.print>

SUMMIT OF SIERRA NEVADA - SNOW SHEDS IN FOREGROUND, DONNER LAKE IN THE DISTANCE, CENTRAL PACIFIC R.R.



Reference Link: <https://www.loc.gov/pictures/item/2003668259/>

Creator(s): Russell, Andrew J., photographer

Date Created/Published: [1868]

Summary: Photograph shows snow sheds over railroad tracks between tunnels in the Sierra Nevada, with Donner Lake in the distance.

Call Number: Illus. in F594 .H41 (Case X) [P&P]

Repository: Library of Congress Prints and Photographs Division Washington, D.C. 20540 USA

Notes: Title from item. Illus. in: Sun pictures of Rocky Mountain scenery, with a description of the geographical and geological features, and some account of the resources of the great West; containing thirty photographic views along the line of the Pacific rail road, from Omaha to Sacramento, / F.V. Hayden. New York : Julius Bien, 1870, [plate] XXIX.

Subjects: Central Pacific Railroad Company--Facilities--California--1860-1870. Snowsheds--California--1860-1870. Railroad construction & maintenance--California--1860-1870. Railroad tunnels--California--1860-1870. Mountains--California--1860-1870. Lakes & ponds--California--1860-1870. Sierra Nevada (Calif. and Nev.)--1860-1870. Donner Lake (Calif.)--1860-1870.