


ALBUM QFT+TPS MASHUP = STUDENT DRIVEN INQUIRY

Album Description

This album is a collaborative effort between Sarah Westbrook from the Right Question Institute and Ann Canning from the TPS Eastern Region Program at Waynesburg University. We wondered what would happen if we combined the Question Formulation Technique (QFT) with TPS Primary Sources and the LOC Analysis tool. Our goal was to create a model for Student Driven Inquiry in which research questions are generated by students and research paths at loc.gov are followed by students supported by their teachers experienced with TPS resources. The resulting QFT+TPS MASHUP is a mix of these two inquiry tools that both include questioning and reflection and together create a powerful way to put students in charge of their own learning! The process for the MASHUP is both a switch and an extension of the Observe•Reflect•Question process of the LOC/TPS Analysis Tool. The sequence is switched to Observe•Question•Reflect and we extended the inquiry to include Corroboration•Keyword Searching and more Reflection.

The first role of the teacher in our model is to select a LOC primary source for the Question Focus (QF) and a LOC Primary Source Set, Exhibit, and other LOC collections related to a chosen curriculum theme as a scaffold to give the students a jump start for their personal inquiry journey. The second role of the teacher in this model is to provide directions and clarification for students as they move through the QFT and the TPS Analysis Tool.

We piloted the QFT+TPS Mashup with  Melissa Lawson's 7th grade Advanced English Class in Folsom Middle School, California and with a group of educators who attended the TPS ER 2020 Conference. Both these groups worked on the MASHUP remotely using Padlets to post their observations, questions, reflections, keywords and additional primary sources they found. You may preview the padlets and even remake them to use as a template with your own students.

Mrs. Lawson's Middle School Mashups: Japanese American Internment

#1 Observe-Question-Reflect

#2 Corroborate

#3 Searching for Primary Sources at LOC.gov

TPS ER 2020 Conference PD Mashups: A Tale of 3 Lenses

Group #1 Toyo Miyatake's Story Part 1

Group #2 Toyo Miyatake's Story Part 2

Group #3 Ansel Adams' Story Part 1

Group #4 Ansel Adams' Story Part 2

Group #5 Dorothea Lange's Story Part 1

Group #5 Dorothea Lange's Story Part 2



The QFT+TPS Mashup is still in the pilot phase. We are looking for TPS educators to try it out either with a Japanese American Internment Question Focus or with a different primary source theme as the QF. We are eager to see what works and what doesn't work when we add the QFT to the TPS primary source analysis tool. Contact either  Ann Canning and  Sarah Westbrook if you would like to try a MASHUP

Image not found

https://sites.msudenver.edu/tpswesternregion/wp-content/uploads/sites/476/2021/11/tps_logo-1.png

with either K-12 students or educators.

PHOTO BY DOROTHEA LANGE. OAKLAND, CALIF., MAR. 1942. A LARGE SIGN READING "I AM AN AMERICAN" WAS PLACED IN THE WINDOW OF A JAPANESE-AMERICAN OWNED STORE.



Teaching Notes:

This photo was taken by Dorothea Lange and may be found in the Library of Congress. It was cropped from the original photo which you can find at the Museum of California. <http://picturethis.museumca.org/pictures/grocery-store-chinatown-oakland-california> If time permits, have students look at both photos and consider Lange's point of view using the questions and additional information provided in the exhibit, Picture This. <http://picturethis.museumca.org/looking-telling-picturing-history-internment>.

Reference Link: <http://www.loc.gov/item/2004665381/>

Summary: Photograph shows the Wanto Co. store located at 401 - 403 Eighth and Franklin Streets in Oakland, California. The business was owned by the Matsuda family. Tatsuro Matsuda, a University of California graduate, commissioned and installed the "I am an American" sign. (Source: researcher R. Yee, Oakland Museum of California, 2017)

Contributor Names: Lange, Dorothea, photographer

Created / Published: 1942 Mar.

Subject Headings: - World War, 1939-1945--Japanese Americans--California--Oakland

- Grocery stores--California--Oakland--1940-1950

- Japanese Americans--Civil rights--1940-1950
- Automobiles--California--Oakland--1940-1950

Genre: Gelatin silver prints--1940-1950

Notes: - Title from item.

- Original caption misidentified location of store as being at "13th and Franklin streets". Business directories, order forms and telephone directories list address of Wanto Co. store as 401 - 403 Eighth and Franklin Streets. (Source: researcher R. Yee, Oakland Museum of California, 2017)

- No. A-35.

- Original negative is at the National Archives and Records Administration, NARA # 210-G-A35.

- Forms part of: Farm Security Administration and Office of War Information Collection (Library of Congress).

- Published in: Dorothea Lange : American photographs / Therese Thau Heyman, Sandra S. Phillips, John Szarkowski. San Francisco : San Francisco Museum of Modern Art : Chronicle Books, c1994, plate 87.

- Published in: Executive order 9066: the internment of 110,000 Japanese Americans [by] Maisie & Richard Conrat. Cambridge, Mass., MIT Press for the California Historical Society [1972]

- Published in: "War" chapter of the ebook Great Photographs from the Library of Congress, 2013.

- Print not found in FSA-OWI J7647 or LOT 1801, 2004.

Repository: Library of Congress Prints and Photographs Division Washington, D.C. 20540 USA

<http://hdl.loc.gov/loc.pnp/pp.print>

Digital Id: cph 3a24566 [//hdl.loc.gov/loc.pnp/cph.3a24566](http://hdl.loc.gov/loc.pnp/cph.3a24566)

**1ST GRADERS AT RAPHAEL WEILL PUBLIC SCHOOL IN SAN FRANCISCO IN APRIL 1942.
PHOTO TAKEN BY DOROTHEA LANGE**



Teaching Notes:

Dorothea Lange photographed 1st graders at Raphael Weill Public School in San Francisco in April 1942, days before these children were relocated. Known for iconic images during the Great Depression, Lange was hired by the War Relocation Authority (WRA) to document the forced relocation of Japanese Americans.

Reference Link: <https://catalog.archives.gov/id/536439>

"AMERICANISM IS A MATTER OF THE HEART AND MIND." PORTRAIT TAKEN BY ANSEL ADAMS AND PUBLISHED IN HIS BOOK, BORN FREE AND EQUAL.



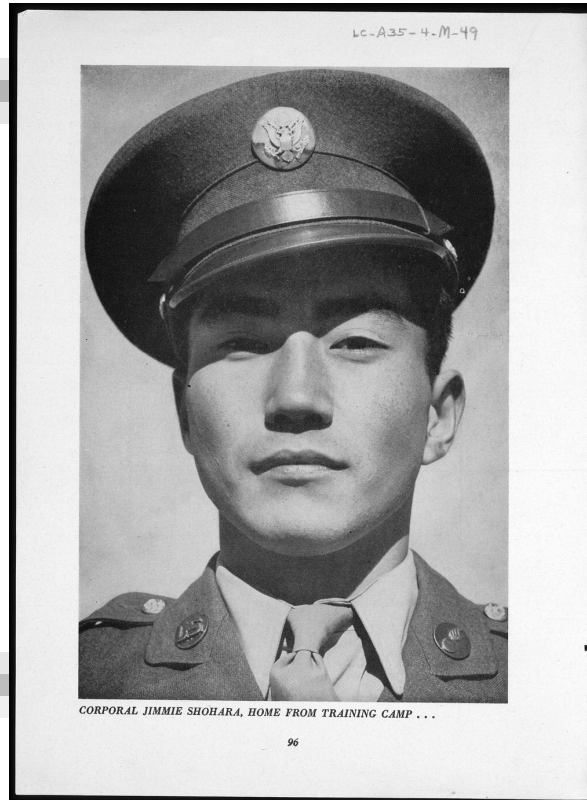
Teaching Notes:

Born free and equal, photographs of the loyal Japanese-Americans at Manzanar Relocation Center, Inyo County, California, by Ansel Adams.

This photograph taken by Ansel Adams and included in his book, Born Free and Equal was of an unnamed woman living at the Manzanar Internment Camp. The caption under the photograph reads "Americanism is a matter of the mind and heart." It is numbered page 59 in the original printing of the book.

Reference Link: http://lcweb2.loc.gov/cgi-bin/ampage?collId=gdc3&fileName=scd0001_20020123001bfpage.db&recNum=50

"CORPORAL JIMMIE SHOHARA FROM TRAINING CAMP". PORTRAIT TAKEN BY ANSEL ADAMS AND PUBLISHED IN HIS BOOK, BORN FREE AND EQUAL.



Teaching Notes:

This photo was taken by Ansel Adams and appears in his book, *Born Free and Equal*, a selection of Ansel Adams's photographs of the Manzanar internment camp which was published in 1944 by U.S. Camera along with a text by Adams. The digital images were made from the 112-page copy held by the Prints and Photographs Division.

"Ansel Adams's Photographs of Japanese-American Internment at Manzanar, contains photographs taken by noted photographer Ansel Adams documenting life at the Manzanar War Relocation Center in California. In addition to documenting life within the internment camps, this collection also allows viewers to study Adams' darkroom techniques and how they shaped the pictures that he created. A special addition to this collection is the text of the book "Born Free and Equal" which provides a collection of the Manzanar images as well as text describing the experience of the Japanese Americans held there.

Reference Link: http://lcweb2.loc.gov/cgi-bin/ampage?collId=gdc3&fileName=scd0001_20020123001bfpage.db&recNum=84

Image not found

https://sites.msudenver.edu/tpswesternregion/wp-content/uploads/sites/476/2021/11/tps_logo-1.png

Teaching Notes:

Toyo Miyatake, Manzanar War Relocation Center (CA), 1943. Toyo

Miyatake was one of more than 10,000 Japanese Americans

interned at Manzanar during World War II.

*Copyright Toyo Miyatake Studios. Linked here with
permission.

Image not found

https://sites.msudenver.edu/tpswesternregion/wp-content/uploads/sites/476/2021/11/tps_logo-1.png

JAPANESE AMERICAN ARMY RECRUIT WORLD WAR II. PHOTO BY TOYO MIYATAKE

Teaching Notes:

This image was taken by Toyo Miyatake, Manzanar War Relocation Center (CA), 1943. Toyo. Miyatake was one of more than 10,000 Japanese Americans

interned at Manzanar during World War II.

*Copyright Toyo Miyatake Studios. Linked here with permission.

LOC/TPS JAPANESE AMERICAN INTERNMENT PRIMARY SOURCE SET

Teaching Notes:

Between 1942 and 1945, thousands of Japanese Americans were, regardless of U.S. citizenship, required to evacuate their homes and businesses and move to remote war relocation and internment camps run by the U.S. Government. This proved to be an extremely trying experience for many of those who lived in the camps, and to this day remains a controversial topic.

QFT OUTLINE FACILITATOR GUIDE

Teaching Notes:

Here is a one page, step-by-step outline of the QFT process for the facilitator or teacher.

Image not found

https://sites.msudenver.edu/tpswesternregion/wp-content/uploads/sites/476/2021/11/tps_logo-1.png

RQI-RESOURCE-STUDENT-WORKSHEET

Teaching Notes:

This is a student worksheet for the QFT process from the Right Question Institute. It can be used by individuals or small groups of students.

QFT+TPS MASHUP.PDF

Teaching Notes:

This is the graphic model for the QFT+TPS Mashup. Educators familiar with the Observe-Reflect-Question sequence of the TPS Analysis Tool will notice that the sequence in this model has flipped and expanded. There are now six steps. In the top tier, the sequence flipped to Observe-Question-Reflect. In the bottom tier Corroborate and Keyword Searching were added and Reflect was repeated. We realized as we worked to merge the two models that we used the cognitive skill of reflections repeatedly and that we used it for making inferences and for meta-cognition or thinking about thinking.

LOC/TPS TEACHERS GUIDES AND STUDENT ANALYSIS TOOL

Teaching Notes:

This webpage found at the Library of Congress in the Teachers Page section lists and provides links to the LOC/TPS Analysis Tool. You will find an online interactive version that students may use to record their observations, reflections, and questions about a primary source. Once completed the form may be downloaded, emailed, or printed. You will also find a pdf form that you may print for paper and pencil analysis. The teacher guides include customized question prompts for different primary source formats including photos, maps, newspapers, manuscripts, cartoons and notated music. These question prompts have been included in the online interactive version of the analysis tool mentioned above. A student can select the format such as photo and then a series of question prompts will appear to guide their thinking.

Image not found

https://sites.msudenver.edu/tpswesternregion/wp-content/uploads/sites/476/2021/11/tps_logo-1.png

PHOTOS DOCUMENT JAPANESE-AMERICAN WARTIME INTERNMENT: A LIBRARY OF CONGRESS BLOG

Teaching Notes:

This is a blog from the Library of Congress *T* by Wendi A. Maloney, writer-editor in the United States Copyright Office.) Maloney describes both Adams and Miyatake and their documentation of one of the darkest chapters in our nation's history, the Japanese American Internment.

Image not found

https://sites.msudenver.edu/tpswesternregion/wp-content/uploads/sites/476/2021/11/tps_logo-1.png

TOYO MIYATAKE'S BIOGRAPHY

WOMEN COME TO THE FRONT/ DOROTHEA LANGE

Teaching Notes:

This exhibit features women who worked for the U.S. Government during WWII on the Home Front, chosen because of the strength and variety of their collections in the Library of Congress. Like their colleagues, the women followed various paths to their wartime assignments. One of the essays describes the work of Dorothea Lange who was assigned to photograph life at Manzanar.

Like Esther Bubley, Dorothea Lange (1895-1965) documented the change on the homefront, especially among ethnic groups and workers uprooted by the war. Three months after Pearl Harbor, President Franklin Roosevelt ordered the relocation of Japanese-Americans into armed camps in the West. Soon after, the War Relocation Authority hired Lange to photograph Japanese neighborhoods, processing centers, and camp facilities.

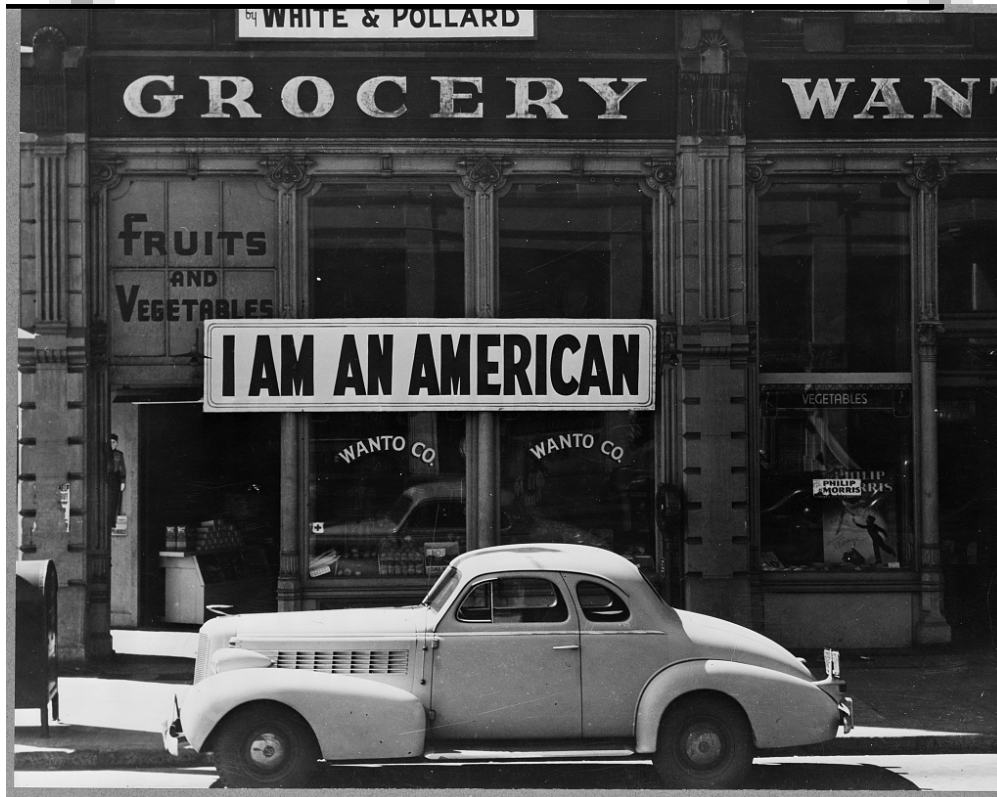
PHOTOS: 3 VERY DIFFERENT VIEWS OF JAPANESE INTERNMENT

Teaching Notes:

This is an NPR recording that examines the Japanese American Internment through the lens of three photographers, Ansel Adams, Dorothea Lange and Toyo Miyatake.

It is a fascinating secondary source for students to use for historical context as they look at the primary source photographs taken by these three photographers.

OAKLAND, CALIF., MAR. 1942. A LARGE SIGN READING



Teaching Notes:

A Lesson Plan using this image as a Q-Focus was created by Sarah Westbrook and can be accessed at this address: <https://padlet.com/sarahwestbrook1/Group5>

Reference Link: <http://www.loc.gov/item/2004665381/>

Summary: Photograph shows the Wanto Co. store located at 401 - 403 Eighth and Franklin Streets in Oakland, California. The business was owned by the Matsuda family. Tatsuro Matsuda, a University of California graduate, commissioned and installed the "I am an American" sign. (Source: researcher R. Yee, Oakland Museum of California, 2017) Lange took this photograph while working for the War Relocation Authority, and the OWI acquired a copy for its own files.

Contributor Names: Lange, Dorothea, photographer

Created / Published: 1942 Mar.

Subject Headings: - World War, 1939-1945--Japanese Americans--California--Oakland

- Grocery stores--California--Oakland--1940-1950

- Japanese Americans--Civil rights--1940-1950

- Automobiles--California--Oakland--1940-1950

Genre: Gelatin silver prints--1940-1950

Notes: - Title from item.

- Original caption misidentified location of store as being at "13th and Franklin streets". Business

directories, order forms and telephone directories list address of Wanto Co. store as 401 - 403 Eighth and Franklin Streets. (Source: researcher R. Yee, Oakland Museum of California, 2017)

- No. A-35.
- Original negative is at the National Archives and Records Administration, NARA # 210-G-A35.
- Forms part of: Farm Security Administration and Office of War Information Collection (Library of Congress).
- Published in: Dorothea Lange : American photographs / Therese Thau Heyman, Sandra S. Phillips, John Szarkowski. San Francisco : San Francisco Museum of Modern Art : Chronicle Books, c1994, plate 87.
- Published in: Executive order 9066: the internment of 110,000 Japanese Americans [by] Maisie & Richard Conrat. Cambridge, Mass., MIT Press for the California Historical Society [1972]
- Published in: "War" chapter of the ebook Great Photographs from the Library of Congress, 2013.
- Print not found in FSA-OWI J7647 or LOT 1801, 2004.

Repository: Library of Congress Prints and Photographs Division Washington, D.C. 20540 USA

<http://hdl.loc.gov/loc.pnp/pp.print>

Digital Id: cph 3a24566 //hdl.loc.gov/loc.pnp/cph.3a24566